

SITE DATA

SURFACE CALCULATIONS		
EXISTING CONDITIONS	TOTAL PARCEL AREA	1,240,496 S.F. = 28.478 AC
	BUILDING/ENCLOSURE	190,021 S.F. = 4.362 AC
	PAVEMENT	341,979 S.F. = 7.851 AC
	TOTAL IMPERVIOUS SURFACE AREA	532,000 S.F. = 12.213 AC (42.9%)
	TOTAL PERVIOUS SURFACE AREA	708,496 S.F. = 16.265 AC (57.1%)
PROPOSED CONDITIONS	SOLAR PANEL STRUCTURE	10,493 S.F = 0.241 AC
	TOTAL IMPERVIOUS SURFACE AREA	542,493 S.F. = 12.454 AC (43.7%)
	TOTAL PERVIOUS SURFACE AREA	698,003 S.F. = 16.024 AC (56.3%)

LEGEND

- STORM MANHOLE
- CATCH BASIN
- STORM SEWER
- SANITARY MANHOLE
- SANITARY SEWER
- CLEAN OUT
- VENT PIPE
- HYDRANT
- COMMUNICATION LINE
- GAS VALVE
- GAS MAIN
- WATER VALVE
- WATER MAIN
- WATER MANHOLE
- POWER POLE
- GUY WIRE
- OVERHEAD WIRES
- LIGHT POLE
- ELECTRIC LINE
- COMMUNICATION BOX
- FLAG POLE
- BASKETBALL HOOP
- SIGN
- TORNADO SIREN
- GUARD POST
- TETHERBALL POST
- DECIDUOUS TREE
- HAND RAIL
- FENCE
- 3/4" REBAR FOUND
- 3/4" REBAR SET
- CHISEL "+" SET

NOTES

BEARING BASE: GRID NORTH, WISCONSIN  
COORDINATE SYSTEM, SOUTH ZONE.  
BASED UPON NAD 1983 / 2011.

ALL ELEVATIONS REFER TO NAVD 1988 (12).

UTILITY NOTE

EXISTING UTILITIES ARE SHOWN FOR INFORMATIONAL PURPOSES ONLY AND  
ARE NOT GUARANTEED TO BE ACCURATE OR ALL INCLUSIVE. CONTRACTOR  
IS RESPONSIBLE FOR VERIFYING THE TYPE, LOCATION, SIZE AND ELEVATION  
OF UNDERGROUND UTILITIES AS THEY DEEM NECESSARY FOR PROPOSED  
UTILITY CONNECTIONS AND / OR TO AVOID DAMAGE THERETO,  
CONTRACTOR SHALL CALL "DIGGER'S HOTLINE" PRIOR TO ANY  
CONSTRUCTION.



McKINSTRY ESSENTION, LLC  
MADISON:  
2310 CROSSROADS DR.  
SUITE 5200  
MADISON, WI 53718  
608-242-9196  
www.mckinstry.com

PROJECT:  
GIFFORD  
SCHOOL

RACINE UNIFIED SCHOOL  
DISTRICT  
8332 NORTHWESTERN AVE,  
RACINE, WI, 53406

REGISTRATIO

Nielsen Madsen + Barber  
CIVIL ENGINEERS AND LAND SURVEYORS  
1458 Horizon Blvd. Suite 200, Racine, WI. 53406  
Tele: (262)634-5588 Website: www.nmbssc.net

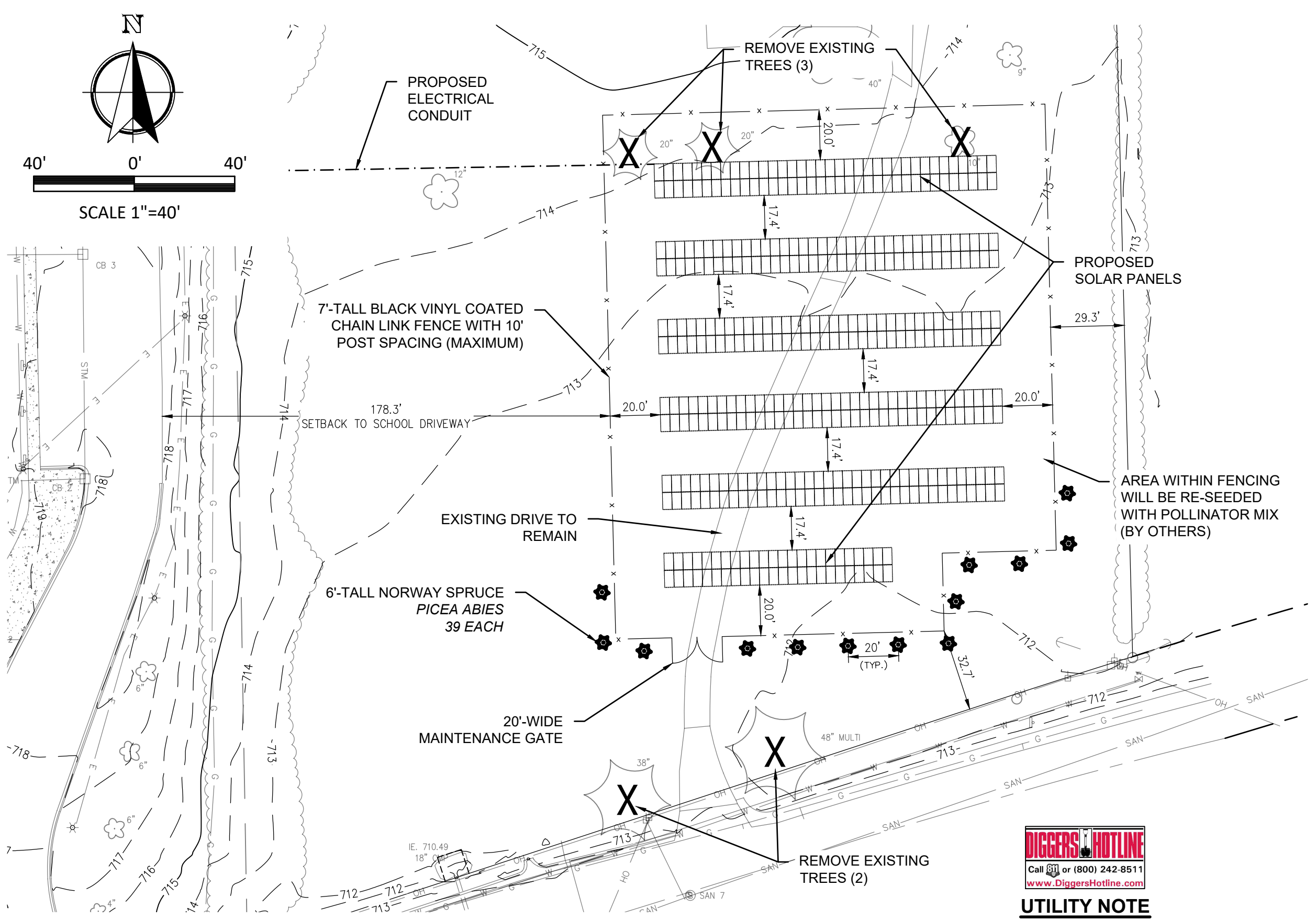
ISSUES:		
NO	DATE	DESCRIPTION
1	8-8-2025	ISSUE FOR REVIEW

DESIGNED:	JGO
DRAWN:	JGO
CHECKED:	JJC
JOB NO:	2025.0020.01

SHEET TITLE:  
OVERALL  
SITE PLAN

SHEET NUMBER:

1



**UTILITY NOTE**

EXISTING UTILITIES ARE SHOWN FOR INFORMATIONAL PURPOSES ONLY AND ARE NOT GUARANTEED TO BE ACCURATE OR ALL INCLUSIVE. CONTRACTOR IS RESPONSIBLE FOR VERIFYING THE TYPE, LOCATION, SIZE AND ELEVATION OF UNDERGROUND UTILITIES AS THEY DEEM NECESSARY FOR PROPOSED UTILITY CONNECTIONS AND / OR TO AVOID DAMAGE THERETO, CONTRACTOR SHALL CALL "DIGGER'S HOTLINE" PRIOR TO ANY CONSTRUCTION.



McKINSTRY ESSENTION, LLC

MADISON:  
2310 CROSSROADS DR.  
SUITE 5200  
MADISON, WI 53718  
608-242-9196

www.mckinstry.com

PROJECT:  
**GIFFORD  
SCHOOL**

RACINE UNIFIED SCHOOL  
DISTRICT  
8332 NORTHWESTERN AVE,  
RACINE, WI, 53406

REGISTRATIO



Nielsen Madsen + Barber  
CIVIL ENGINEERS AND LAND SURVEYORS  
1458 Horizon Blvd. Suite 200, Racine, WI. 53406  
Tele: (262)634-5588 Website: www.nmbssc.net

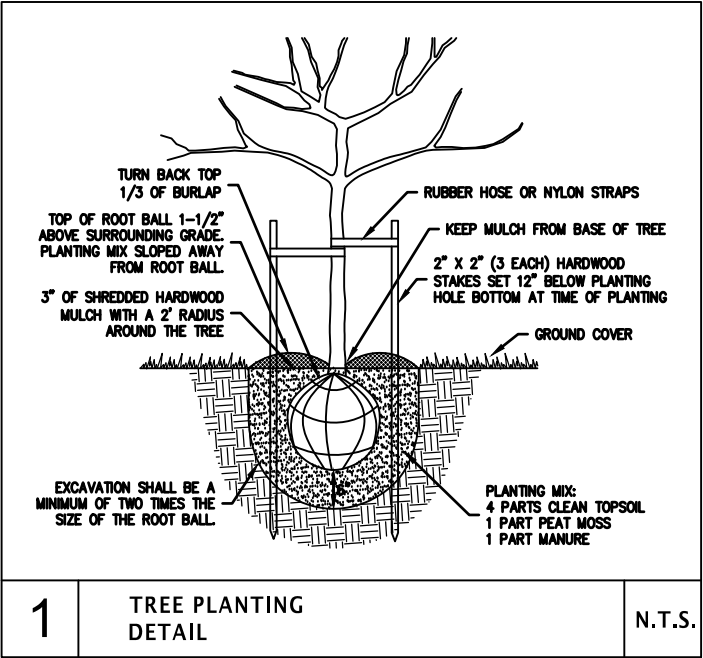
ISSUES:

NO	DATE	DESCRIPTION
1	8-8-2025	ISSUE FOR REVIEW

DESIGNED:	JGO
DRAWN:	JGO
CHECKED:	JJC
JOB NO:	2025.0020.01

SHEET TITLE:  
**DETAILED  
SITE PLAN**

SHEET NUMBER:



GENERAL NOTES

CONTRACTOR SHALL CONTACT DIGGER'S HOTLINE A MINIMUM OF 3 DAYS BEFORE THE START OF CONSTRUCTION TO IDENTIFY ANY UNDERGROUND UTILITIES PRESENT AT THE SITE. THE LOCATION OF EXISTING PRIVATE UTILITIES MAY NOT BE SHOWN ON THE PLANS AND SHOULD BE LOCATED BY THE CONTRACTOR PRIOR TO CONSTRUCTION.

AT THE COMPLETION OF THE PROJECT THE CONTRACTOR SHALL REMOVE AND DISPOSE OF ALL ABANDONED, EXCESS, WASTE, STOCKPILED AND SPOIL MATERIAL IN ACCORDANCE WITH SECTION 205.3.12 OF THE "STATE SPECIFICATIONS". THIS WORK SHALL BE DONE AT THE CONTRACTOR'S EXPENSE.



McKINSTRY ESSENTION, LLC

MADISON:  
2310 CROSSROADS DR.  
SUITE 5200  
MADISON, WI 53718  
608-242-9196

www.mckinstry.com

PROJECT:

GIFFORD  
SCHOOL

RACINE UNIFIED SCHOOL  
DISTRICT  
8332 NORTHWESTERN AVE,  
RACINE, WI, 53406

REGISTRATIO



Nielsen Madsen + Barber

CIVIL ENGINEERS AND LAND SURVEYORS  
1458 Horizon Blvd. Suite 200, Racine, WI. 53406  
Tele: (262)634-5588 Website: www.nmbssc.net

ISSUES:

NO	DATE	DESCRIPTION
1	8-8-2025	ISSUE FOR REVIEW

DESIGNED: JGO

DRAWN: JGO

CHECKED: JJC

JOB NO: 2025.0020.01

SHEET TITLE:

DETAILS &  
SPECIFICATIONS

SHEET NUMBER:

3