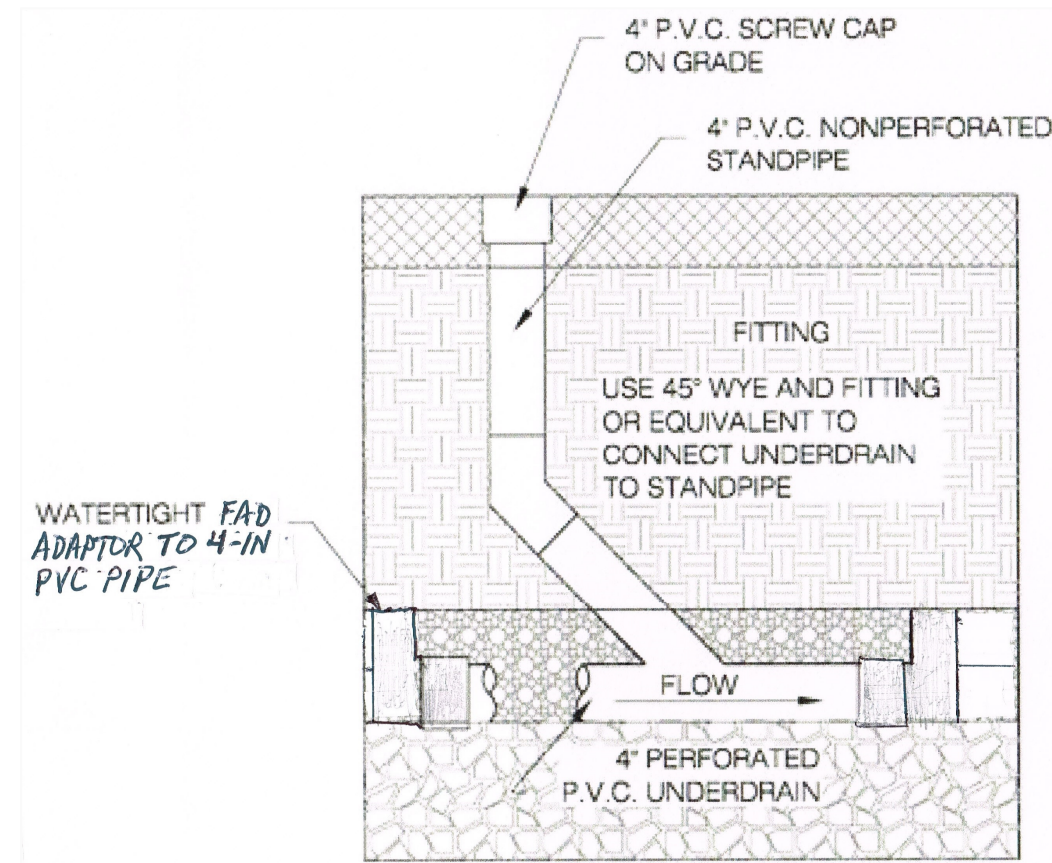
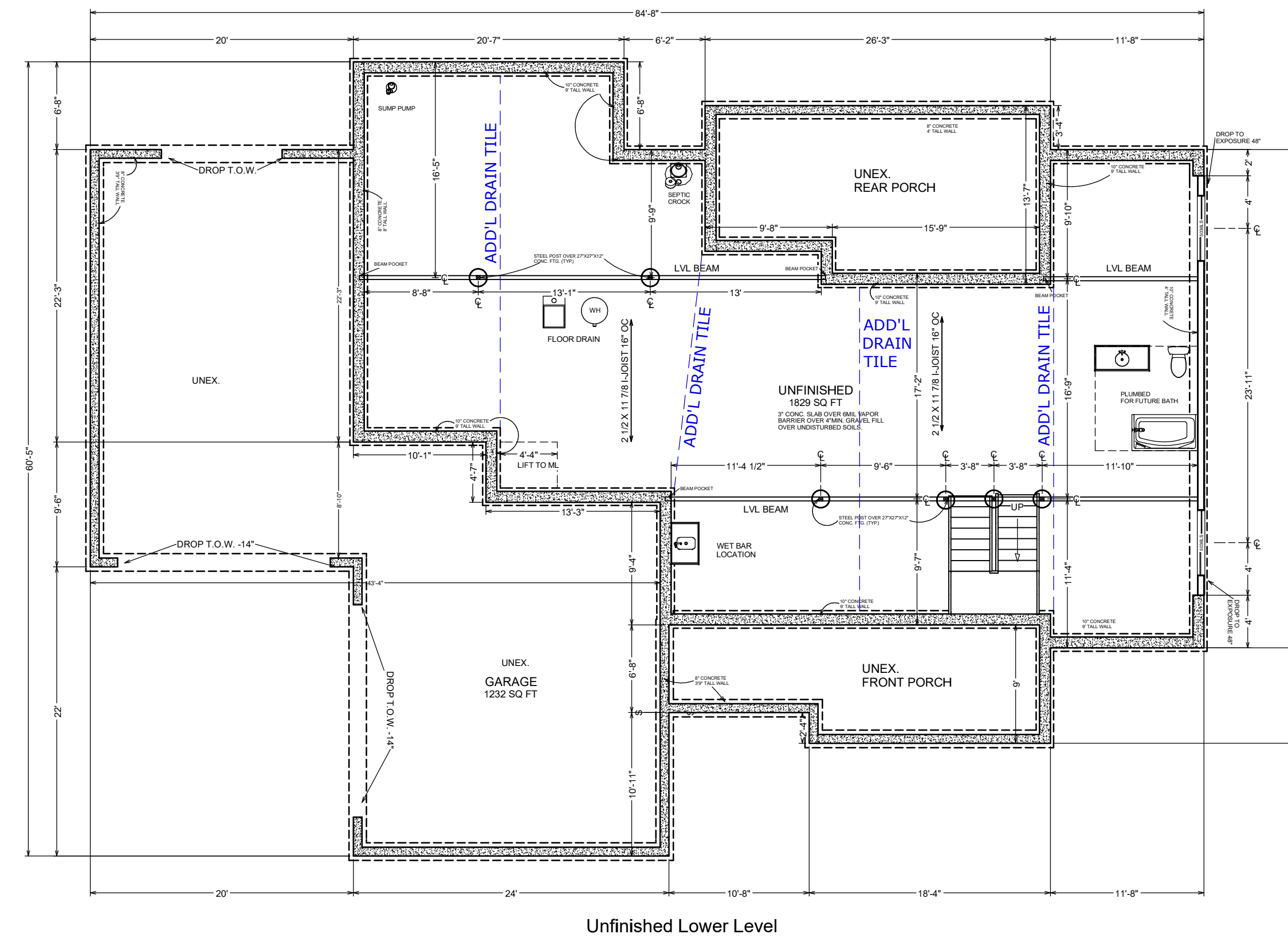


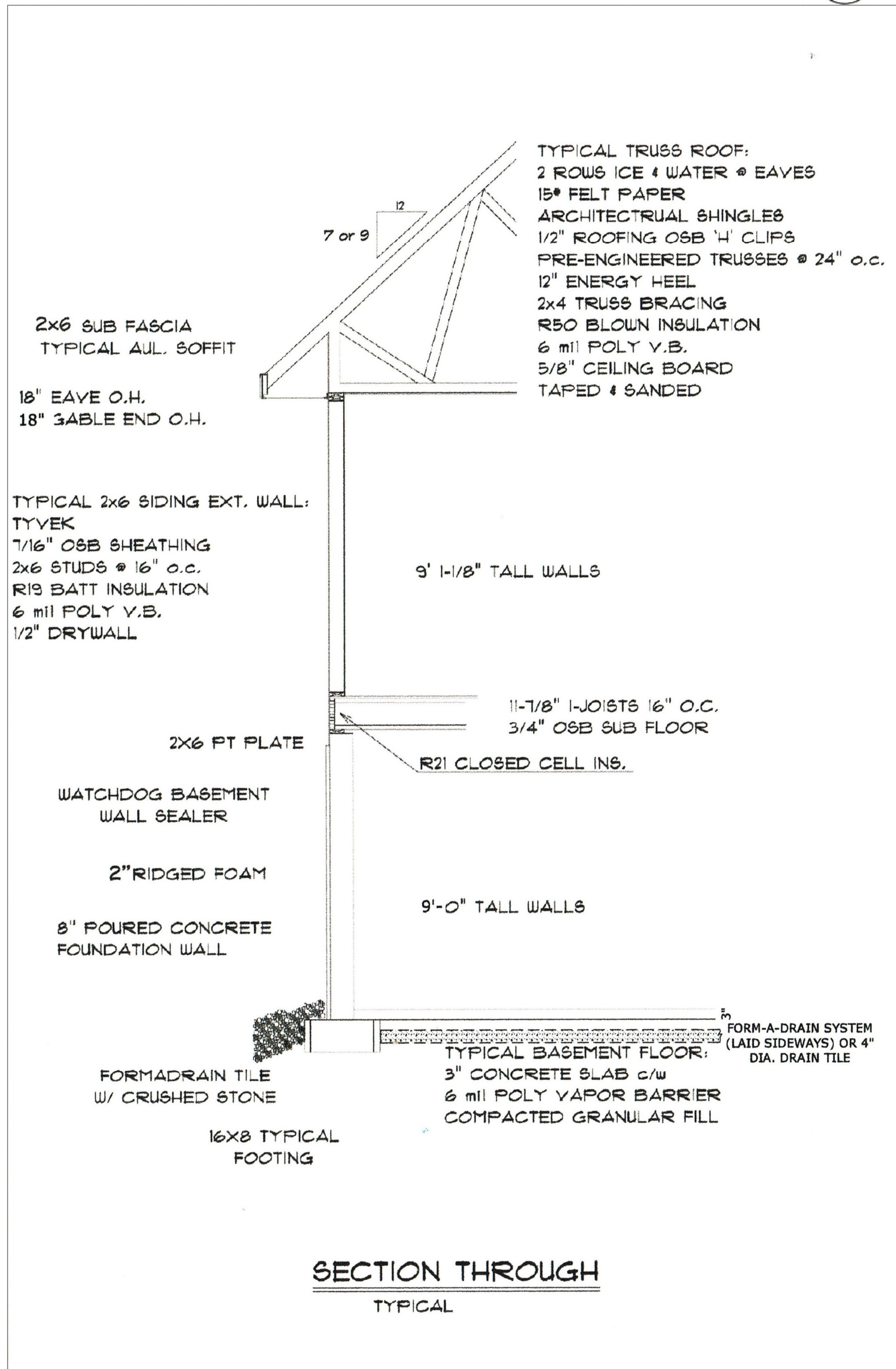
TYPICAL FORM-A-DRAIN CROSS-SECTION
NOT TO SCALE



DETAIL: 4" P.V.C. CLEANOUT
NTS



HOUSE PLAN VIEW FOR DRAIN TILE UNDER FLOOR SLAB
NOT TO SCALE

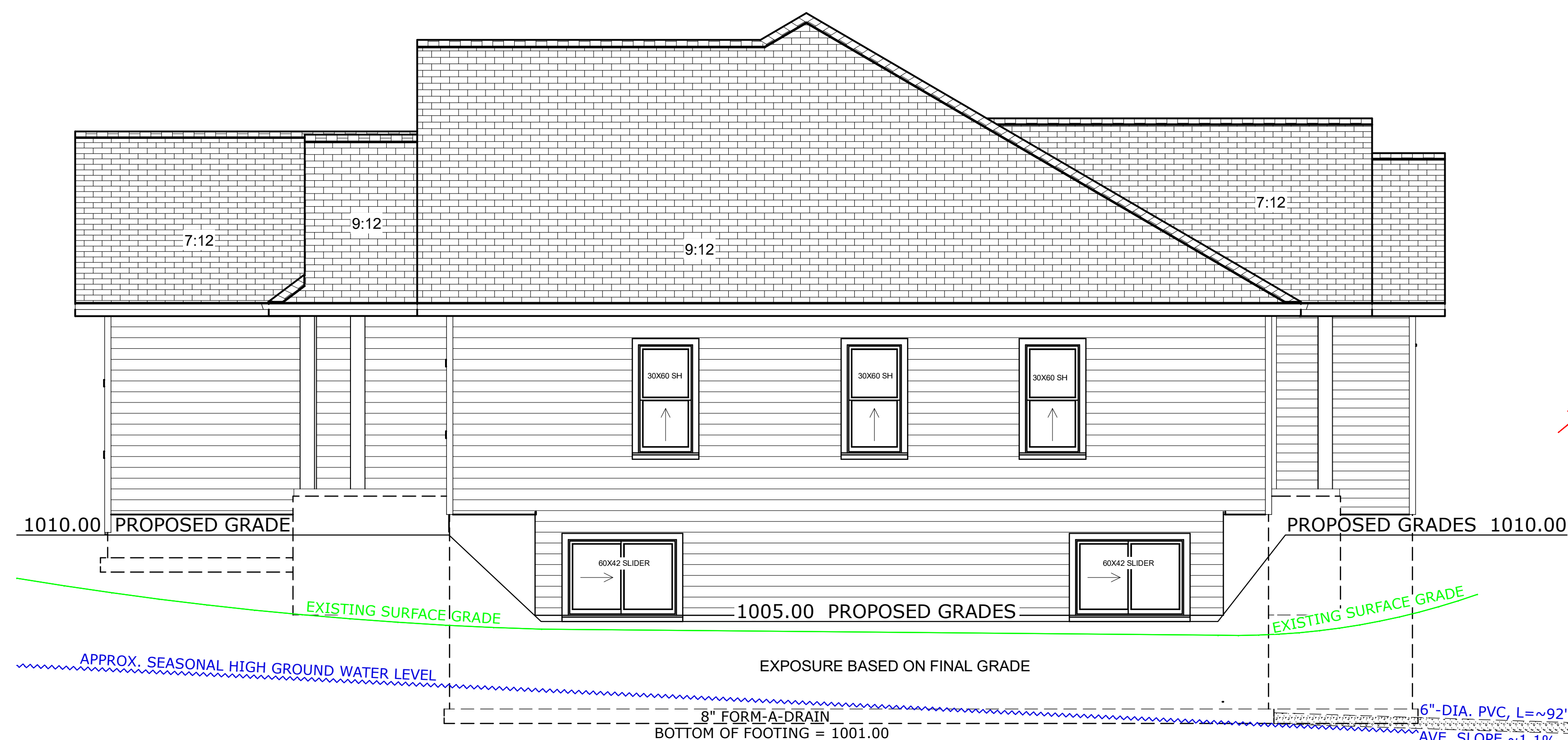


SECTION THROUGH
TYPICAL

INSPECTION SCHEDULE DURING CONSTRUCTION:

THE ENGINEER OF RECORD (EOR) IS THE INDIVIDUAL THAT HAS STAMPED AND SIGNED THE APPROVED PLAN SET. AS SUCH, THEY AND/OR THEIR DESIGNATED REPRESENTATIVE (HENCEFORTH REFERRED TO JOINTLY AS "EOR") WILL COORDINATE WITH BUILDER TO CONDUCT SITE INSPECTIONS DURING CONSTRUCTION TO ENSURE ENGINEERED DRAINAGE SYSTEM (HENCEFORTH REFERRED TO AS "EDS") IS INSTALLED ACCORDING TO THE APPROPRIATE PERFORMANCE SPECIFICATIONS. EDS MUST BE INSPECTED AND MAINTAINED IN SUCH A MANNER AS TO OPERATE AS DESIGNED FOR THE LIFE OF THE RESIDENTIAL STRUCTURE. AT A MINIMUM, SITE INSPECTIONS WILL BE PERFORMED DURING THESE CONSTRUCTION PHASES:

1. EDS INSTALLATION. THE EOR AND/OR EOR'S REPRESENTATIVE WILL CONDUCT A VISUAL INSPECTION OF THE VARIOUS SYSTEM COMPONENTS TO VERIFY THAT PROPER CONNECTIONS ARE INSTALLED AND MAINTAINED PRIOR TO BACKFILLING FOUNDATION WALL OR POURING BASEMENT FLOOR SLAB. DISCHARGE FROM INTERIOR SUMP PUMPS WILL BE DIRECTED TOWARDS SIDEYARD SWALES THAT DIRECT FLOW TOWARDS THE LAKE.
2. GRADING. THE EOR AND/OR EOR'S REPRESENTATIVE WILL CONDUCT A POST-GRADING AS-BUILT INSPECTION TO VERIFY THAT THE YARD GRADE COMPONENTS OF THE EDS HAVE NOT BEEN DAMAGED OR DISTURBED TO THE POINT THAT THEIR FUTURE FUNCTIONALITY IS COMPROMISED.
3. AFTER CONSTRUCTION VERIFICATION. THE EOR WILL COMPLETE, SIGN AND SUBMIT A CONSTRUCTION VERIFICATION DOCUMENT TO WAUKESHA COUNTY AND TOWN OF MUKWONAGO FOR REVIEW. AFTER CONSTRUCTION VERIFICATION IS ACCEPTED BY MUNICIPAL STAFF, AN ADDENDUM TO THE DECLARATION OF RESTRICTIONS SHALL BE RECORDED BY THE SITE OWNER AT THE WAUKESHA COUNTY REGISTER OF DEEDS OFFICE. THE ADDENDUM MAY INCLUDE ADDITIONAL EXHIBITS, SUCH AS THE EOR VERIFICATION FORM AND/OR SYSTEM AS-BUILT PLANS. WAUKESHA COUNTY AND/OR TOWN OF MUKWONAGO MAY REQUIRE FUTURE CHANGES TO THIS DECLARATION OF RESTRICTIONS IF PLAN MODIFICATIONS ARE PROPOSED, REVIEWED AND APPROVED BY MUNICIPAL STAFF.



HOUSE RIGHT VIEW CROSS SECTION FOR DRAIN TILE UNDER FLOOR SLAB
NOT TO SCALE



WHITE OAK BUILDERS, INC.
 WEGNER PROPERTY
 W3331S9200HERITAGE HILL COURT
 MUKWONAGO, WI 53149

PROJECT #	4112.00
DATE	26FEB2025
DRAWN BY	MA
DESIGNED BY	MA
REVISIONS	05MAR2025 24MAR2025
SHEET NUMBER	

C-3

LANDMARK
ENGINEERING SCIENCES, INC.
 119 COOLIDGE AVE., SUITE 100, WAUKESHA, WI 53186
 PHONE: 414-719-2769
 EMAIL: LANDMARK-ENGINEERING@LIVE.COM

FOUNDATION DRAINAGE SYSTEM

DISCHARGE
I.E. = 999.9