

Date: May 10, 2024

To: Village of East Troy Plan Commission

From: Tim Schwecke, Zoning Administrator

Subject: Sign permit review for Starbucks located at 1885 CTH ES; Goodden ES20 LLC and ACG Development #4, LLC, applicant

Application: 2024-09; <https://s.zoninghub.com/TKOUR2DOFB>

Meeting: May 13, 2024 Plan Commission meeting

General Description The property owner has submitted an application for signage at Starbucks.

The monument sign complies with the maximum height requirement (8 feet) and the maximum sign area of 60 square feet per side.

The wall sign (channel letter) on the main façade complies with the maximum sign area. A wall sign is proposed above the service window – it is not allowed because it does not face a street. The site plan shows a wall sign, but the signage plan doesn't show any details on that.

Directional signs are allowed but may not include the business name or any logos.

Review procedures With regard to sign permits for new projects, the Plan Commission makes the final decision. The Plan Commission may (1) approve, (2) approve with conditions, or (3) deny the application. If approval is granted, the Plan Commission can impose conditions deemed necessary to protect the public health, safety, and welfare.

Public notice Aside from being included on the meeting agenda, no other public notice is required.

Proposed motion Approve the proposed signs as proposed, subject to the following conditions:

1. The applicant must obtain any building permits as may be required.
2. The wall sign above the service window may not be installed.

Attachments:

1. Application materials

STARBUCKS COFFEE #84041
EAST TROY - I-43 & NORTH ST
1882 CTH ES
EAST TROY, WI 53120



24-70784

HILTONDISPLAYS

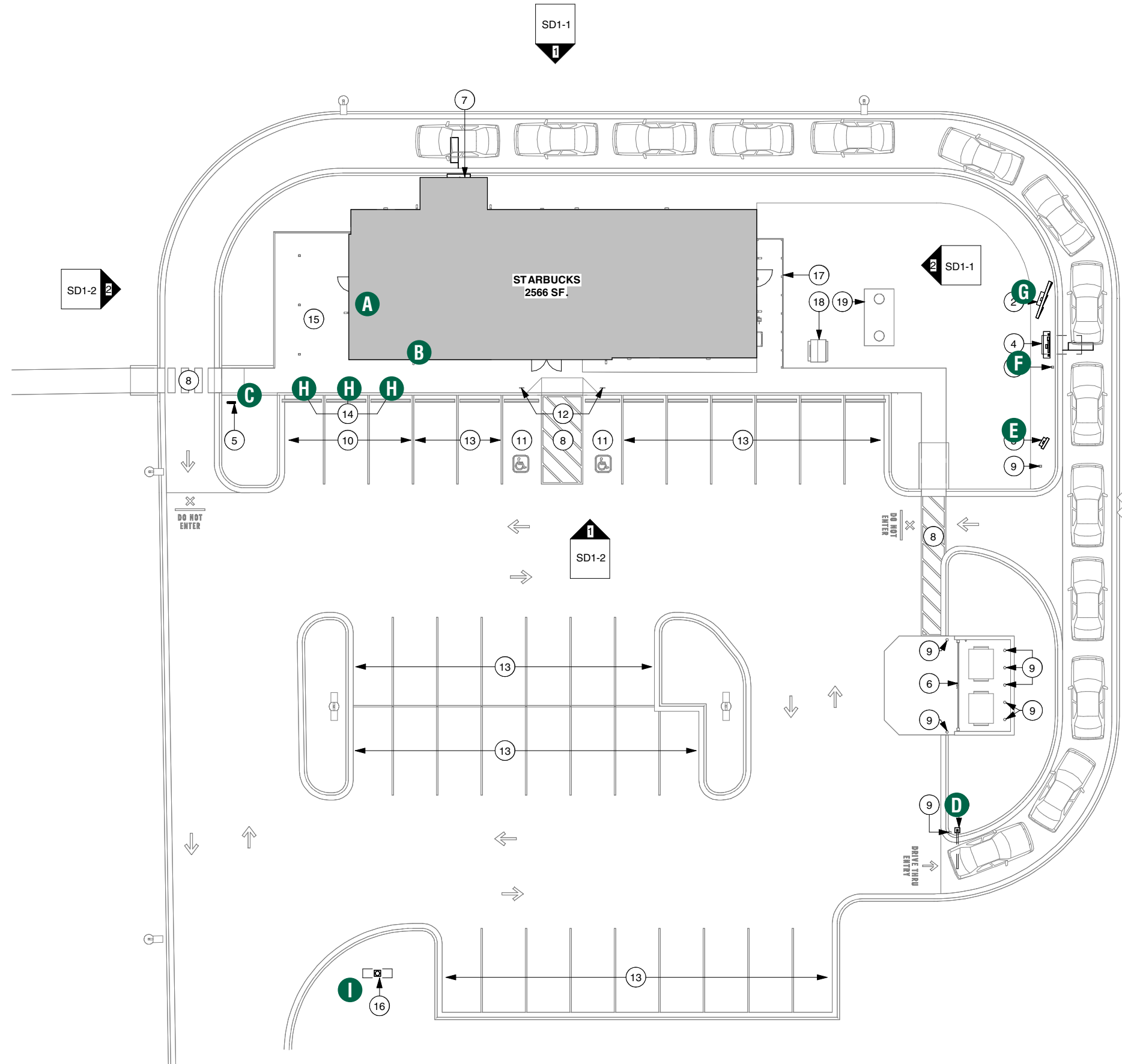
125 HILLSIDE DRIVE • GREENVILLE SC 29607

P 800 353 9132 • F 864 242 2204

www.hiltondisplays.com

SITE PLAN

- A** 60" SIREN
- B** 18" CHANNEL LETTERS
- C** DIRECTIONAL TY/EO
- D** CLEARANCE BAR
- E** PRE-MENU BOARD
- F** DOS/CANOPY
- G** MENU BOARD
- H** MOP PARKING
- I** MONUMENT



HILTONDISPLAYS
 125 HILLSIDE DRIVE • GREENVILLE SC 29607
 P 800 353 9132 • F 864 242 2204
 www.hiltondisplays.com

QID 24-70784

JOB NAME

Starbucks 84041

LOCATION

1882 Cth Es
 East Troy, WI 53120

CUSTOMER CONTACT

SALESMAN / PM

Jo Hall

DESIGNER

Brady Taylor

DWG. DATE

2-4-24

REV. DATE / REVISION

SCALE

As Noted

FILE

2024/Starbucks/Locations/
 East Troy WI/24-70784/
 SB East Troy WI 24-70784

DESIGN SPECIFICATIONS ACCEPTED BY:

EST: CLIENT:

SLS/PM: LANDLORD:

THE INTENT OF THIS DRAWING IS TO SHOW A CONCEPTUAL REPRESENTATION OF THE PROPOSED SIGNAGE. DUE TO VARIATIONS IN PRINTING DEVICES AND SUBSTRATES, THE FINISHED PRODUCT MAY DIFFER SLIGHTLY FROM DRAWING.

Underwriters Laboratories Inc.

DRY	
DAMP	
WET	X

ELEVATION

- A** 60" SIREN
- B** 18" CHANNEL LETTERS
- C** DIRECTIONAL TY/EO
- D** CLEARANCE BAR
- E** PRE-MENU BOARD
- F** DOS/CANOPY
- G** MENU BOARD
- H** MOP PARKING
- I** MONUMENT

HILTONDISPLAYS
 125 HILLSIDE DRIVE • GREENVILLE SC 29607
 P 800 353 9132 • F 864 242 2204
 www.hiltondisplays.com

QID 24-70784

JOB NAME

Starbucks 84041

LOCATION

1882 Cth Es
 East Troy, WI 53120

CUSTOMER CONTACT

SALESMAN / PM

Jo Hall

DESIGNER

Brady Taylor

DWG. DATE

2-4-24

REV. DATE / REVISION

SCALE

As Noted

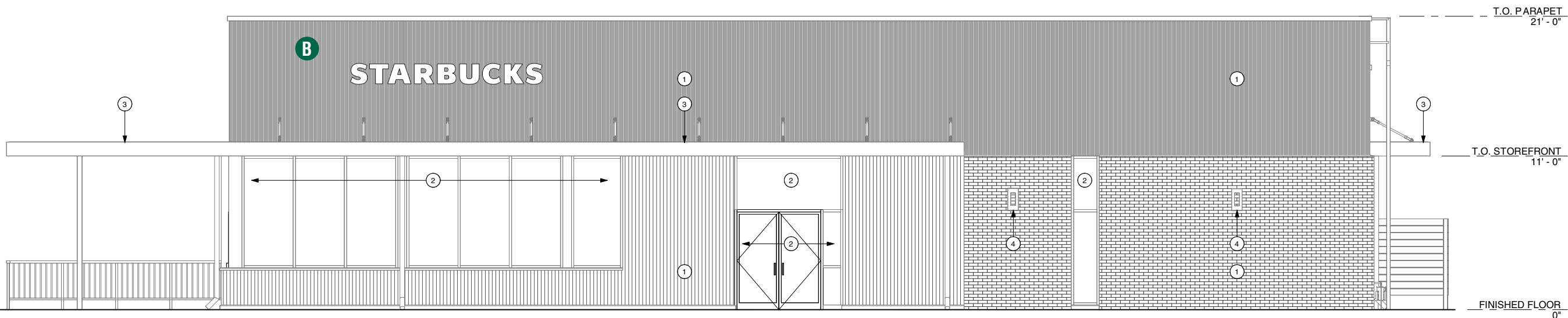
FILE

2024/Starbucks/Locations/
 East Troy WI/24-70784/
 SB East Troy WI 24-70784

DESIGN SPECIFICATIONS ACCEPTED BY:

EST:	CLIENT:
SLS/PM:	LANDLORD:

THE INTENT OF THIS DRAWING IS TO SHOW A CONCEPTUAL REPRESENTATION OF THE PROPOSED SIGNAGE. DUE TO VARIATIONS IN PRINTING DEVICES AND SUBSTRATES, THE FINISHED PRODUCT MAY DIFFER SLIGHTLY FROM DRAWING.



SCHEMATIC EXTERIOR ELEVATION @ STOREFRONT

Scale: 1/8" = 1'-0"

ELEVATION

- A** 60" SIREN
- B** 18" CHANNEL LETTERS
- C** DIRECTIONAL TY/EO
- D** CLEARANCE BAR
- E** PRE-MENU BOARD
- F** DOS/CANOPY
- G** MENU BOARD
- H** MOP PARKING
- I** MONUMENT

HILTONDISPLAYS
 125 HILLSIDE DRIVE • GREENVILLE SC 29607
 P 800 353 9132 • F 864 242 2204
 www.hiltondisplays.com

QID 24-70784

JOB NAME

Starbucks 84041

LOCATION

1882 Cth Es
 East Troy, WI 53120

CUSTOMER CONTACT

SALESMAN / PM

Jo Hall

DESIGNER

Brady Taylor

DWG. DATE

2-4-24

REV. DATE / REVISION

SCALE

As Noted

FILE

2024/Starbucks/Locations/
 East Troy WI/24-70784/
 SB East Troy WI 24-70784

DESIGN SPECIFICATIONS ACCEPTED BY:

EST:	CLIENT:
SLS/PM:	LANDLORD:

THE INTENT OF THIS DRAWING IS TO SHOW A CONCEPTUAL REPRESENTATION OF THE PROPOSED SIGNAGE. DUE TO VARIATIONS IN PRINTING DEVICES AND SUBSTRATES, THE FINISHED PRODUCT MAY DIFFER SLIGHTLY FROM DRAWING.



SCHEMATIC EXTERIOR ELEVATION @ DRIVE THRU

Scale: 1/8" = 1'-0"

S/F EXTERIOR TRIMLESS FLEX FACE SIREN WALL SIGN

Qty. 1

SBC-S13164-60-FF

A

HILTONDISPLAYS
 125 HILLSIDE DRIVE • GREENVILLE SC 29607
 P 800 353 9132 • F 864 242 2204
 www.hiltondisplays.com

QID 24-70784

JOB NAME

Starbucks 84041

LOCATION

1882 Cth Es
 East Troy, WI 53120

CUSTOMER CONTACT

SALESMAN / PM

Jo Hall

DESIGNER

Brady Taylor

DWG. DATE

2-4-24

REV. DATE / REVISION

SCALE

As Noted

FILE

2024/Starbucks/Locations/
 East Troy WI/24-70784/
 SB East Troy WI 24-70784

DESIGN SPECIFICATIONS ACCEPTED BY:

EST:	CLIENT:
SLS/PM:	LANDLORD:

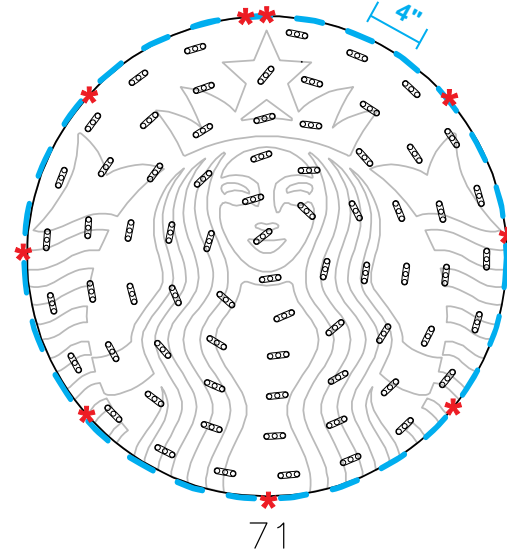
THE INTENT OF THIS DRAWING IS TO SHOW A CONCEPTUAL REPRESENTATION OF THE PROPOSED SIGNAGE. DUE TO VARIATIONS IN PRINTING DEVICES AND SUBSTRATES, THE FINISHED PRODUCT MAY DIFFER SLIGHTLY FROM DRAWING.

UL Underwriters Laboratories Inc.

DRY	<input type="checkbox"/>
DAMP	<input type="checkbox"/>
WET	<input checked="" type="checkbox"/>



Excellart Face Retention clips spaced at 4" on center.

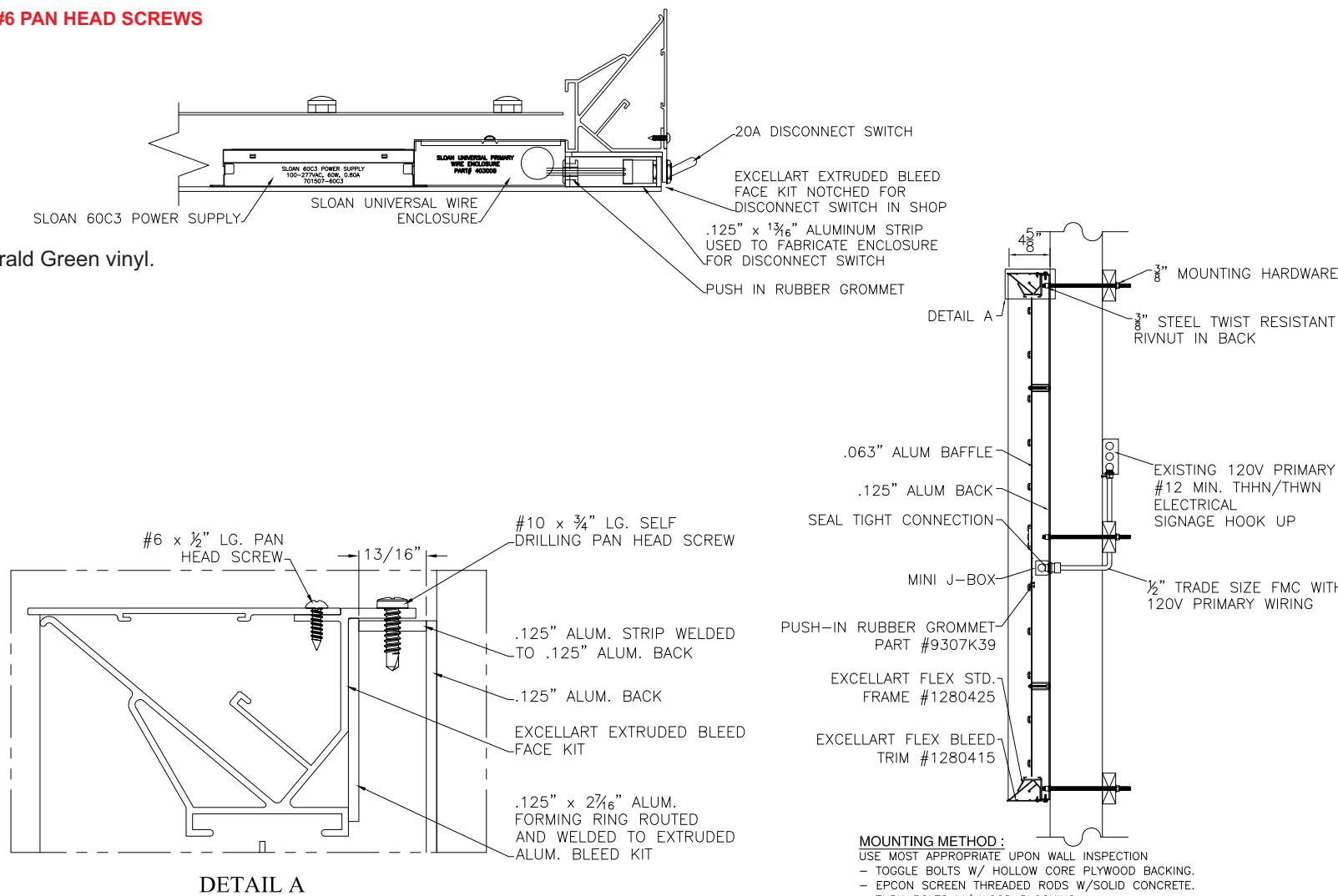


- 1) ACTUAL CHANNEL LETTER POPULATION AND PRODUCT PLACEMENT MAY VARY FROM THIS LAYOUT
- 2) PRISM ENLIGHTEN WHITE 6500K LAID OUT AT 1.5 MODULES PER FOOT, 5.0" ON CENTER
- 3) EACH 60W3 POWER SUPPLY CAN RUN UP TO 72 PRISM ENLIGHTEN WHITE 6500K MODULES
- 4) LAYOUT BASED ON A 2.5" CAN DEPTH
- 5) DIMENSIONS ARE IN INCHES UNLESS STATED OTHERWISE
- 6) 701269-6WEJ1-MB WATTS PER MODULE: .75
- 7) PRIMARY SYSTEM POWER: 66.56 WATTS
- 8) LED MODULE POWER USAGE (secondary): 53.25 WATTS

ESTIMATED PRODUCT B.O.M. PER SIGN:

- 71 Each Prism Enlighten White 6500K Modules - 48'
- PN: 701269-6WEJ1-MB
- 1 Each 60C2 (Damp/Dry locations) or 60W3 (Wet location) 60W Power Supply 12VDC
- 1 Each 100' Roll of Jacketed Cable

* #6 PAN HEAD SCREWS



1 FRONT VIEW

Scale: 1/2" = 1' (11x17 Paper)

Specifications:

- A** Single face internally illuminated Excellart EC-Flex Standard flex face cabinet with bleed trim cover.
- B** White 3M 19 oz Panagraphics III Flex Faces with 3M 3630-126 Dark Emerald Green vinyl. Face retention clips spaced every 4".
- C** Interior of cabinet painted reflective white and exterior painted satin black.
- D** Internally illuminated with 6500K Sloan Prism Enlighten LEDs with remote power supply.
- E** 1/4" drain holes located at the bottom of cabinet as required by UL 48 for Electric Signs.
- F** Drain holes to be covered with drain hole covers to reduce light leaks.

COLOR LEGEND		
	PMS/PAINT	VINYL
	PMS 3425 C	3M 3630-126
	SATIN BLACK	NA
	PMS WHITE	NA

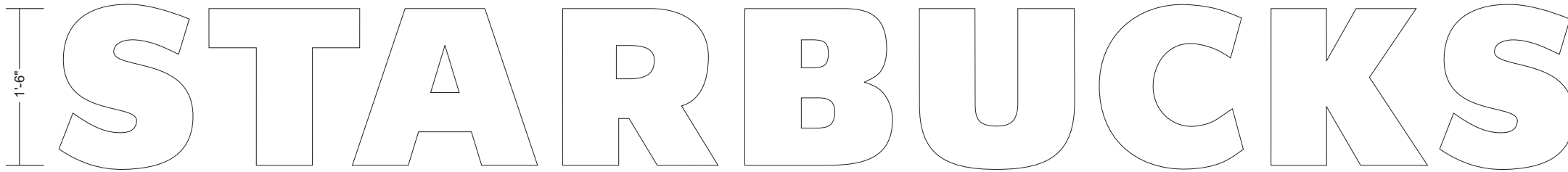
TRIMLESS CHANNEL LETTERS - REMOTE

Qty. 1

B

SBC-S18497-SB-18-W-SDS

14'-5 15/16"

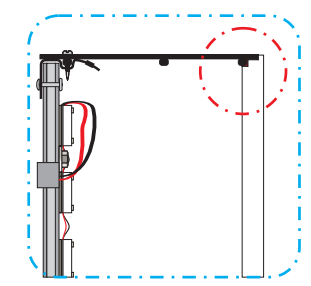
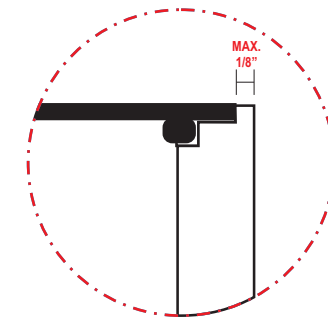
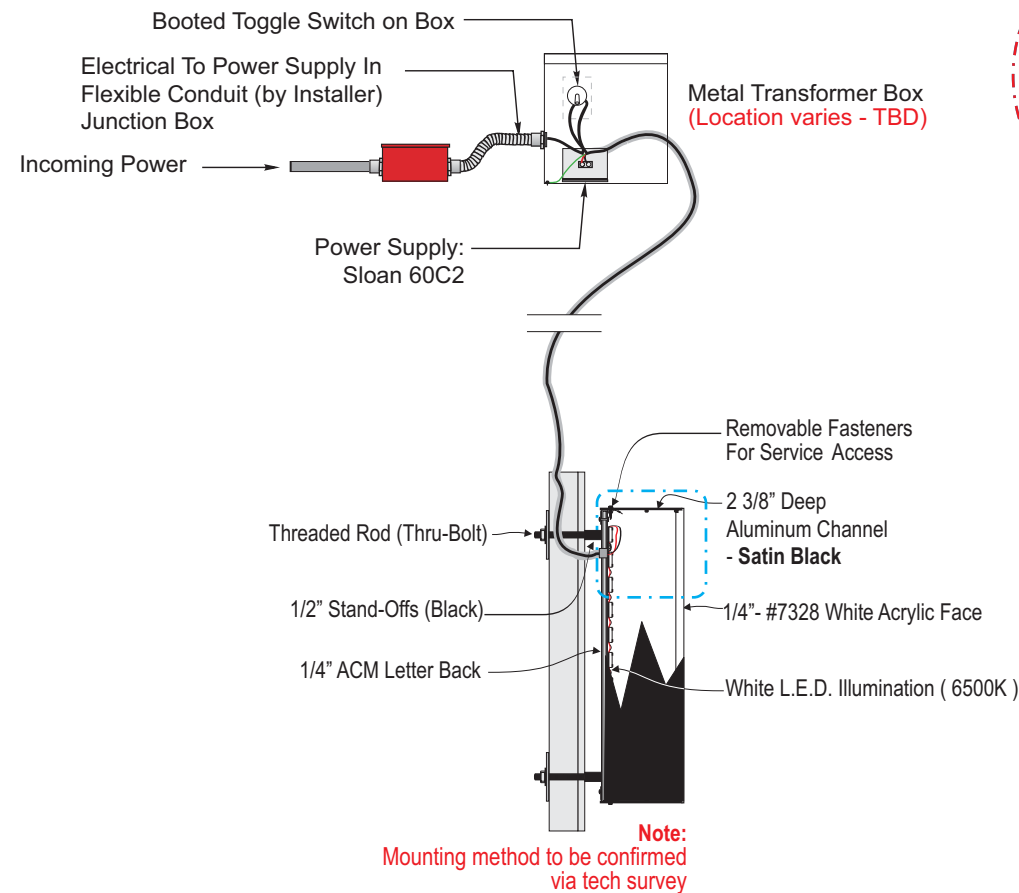


Front View

Scale: 3/4" = 1'-0" (11x17 Paper)

Specifications:

- A** Internally illuminated SDS LetterForm trimless channel letter with returns painted **satIn black**.
- B** White faces to be 1/4" 7328 matte white acrylic
- C** Internally illuminated letters with 6500K Sloan white LED mounted to 1/4" ACM backs
- D** 1/4" drain holes located at the bottom of each letter as required by UL 48 for Electric Signs.
- E** Drain holes to be covered with drain hole covers to reduce light leaks.



COLOR LEGEND		
	PMS/PAINT	VINYL
	PMS 3425 C	3M 3630-126
	SATIN BLACK	NA
	PMS WHITE	NA



HILTONDISPLAYS
 125 HILLSIDE DRIVE • GREENVILLE SC 29607
 P 800 353 9132 • F 864 242 2204
 www.hiltondisplays.com

QID 24-70784

JOB NAME

Starbucks 84041

LOCATION

1882 Cth Es
East Troy, WI 53120

CUSTOMER CONTACT

SALESMAN / PM

Jo Hall

DESIGNER

Brady Taylor

DWG. DATE

2-4-24

REV. DATE / REVISION

SCALE

As Noted

FILE

2024/Starbucks/Locations/
East Troy WI/24-70784/
SB East Troy WI 24-70784

DESIGN SPECIFICATIONS ACCEPTED BY:

EST:	CLIENT:
SLS/PM:	LANDLORD:

THE INTENT OF THIS DRAWING IS TO SHOW A CONCEPTUAL REPRESENTATION OF THE PROPOSED SIGNAGE. DUE TO VARIATIONS IN PRINTING DEVICES AND SUBSTRATES, THE FINISHED PRODUCT MAY DIFFER SLIGHTLY FROM DRAWING.



DIRECTIONAL - NEW FOUNDATION

SBC-S23074-DIR-IL-NF-XTY-44

Qty. 1



HILTONDISPLAYS
 125 HILLSIDE DRIVE • GREENVILLE SC 29607
 P 800 353 9132 • F 864 242 2204
 www.hiltondisplays.com

QID 24-70784

JOB NAME

Starbucks 84041

LOCATION

1882 Cth Es
 East Troy, WI 53120

CUSTOMER CONTACT

SALESMAN / PM

Jo Hall

DESIGNER

Brady Taylor

DWG. DATE

2-4-24

REV. DATE / REVISION

SCALE

As Noted

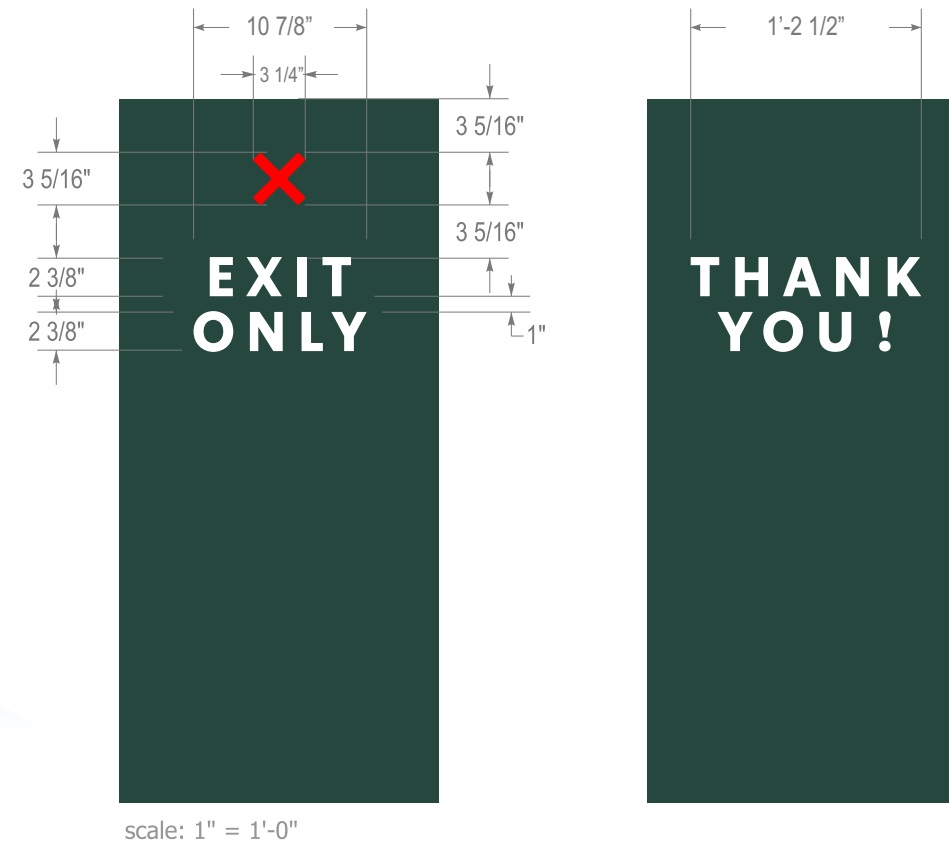
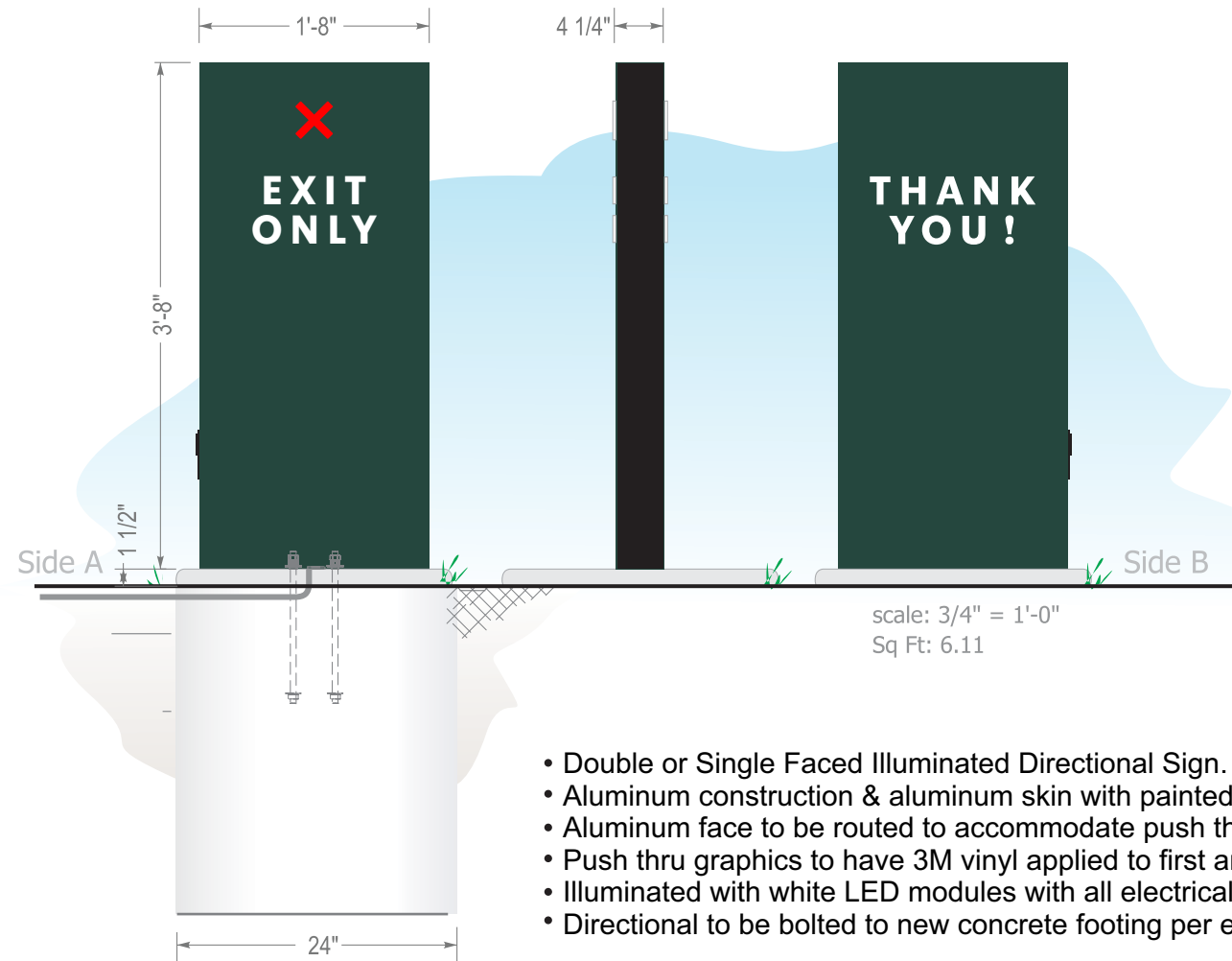
FILE

2024/Starbucks/Locations/
 East Troy WI/24-70784/
 SB East Troy WI 24-70784

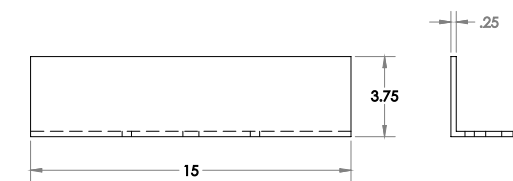
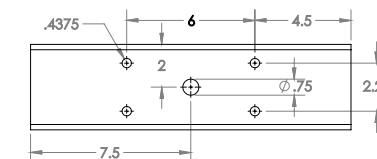
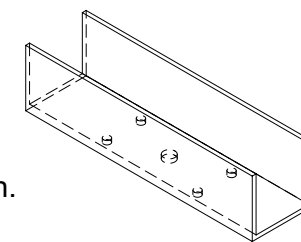
DESIGN SPECIFICATIONS ACCEPTED BY:

EST:	CLIENT:
SLS/PM:	LANDLORD:

THE INTENT OF THIS DRAWING IS TO SHOW A CONCEPTUAL REPRESENTATION OF THE PROPOSED SIGNAGE. DUE TO VARIATIONS IN PRINTING DEVICES AND SUBSTRATES, THE FINISHED PRODUCT MAY DIFFER SLIGHTLY FROM DRAWING.



- Double or Single Faced Illuminated Directional Sign.
- Aluminum construction & aluminum skin with painted finishes.
- Aluminum face to be routed to accommodate push thru graphics.
- Push thru graphics to have 3M vinyl applied to first and second surface.
- Illuminated with white LED modules with all electrical UL listed and labeled.
- Directional to be bolted to new concrete footing per engineering for site location and soil condition.



aluminum box tube with top removed to create u channel

Colors:

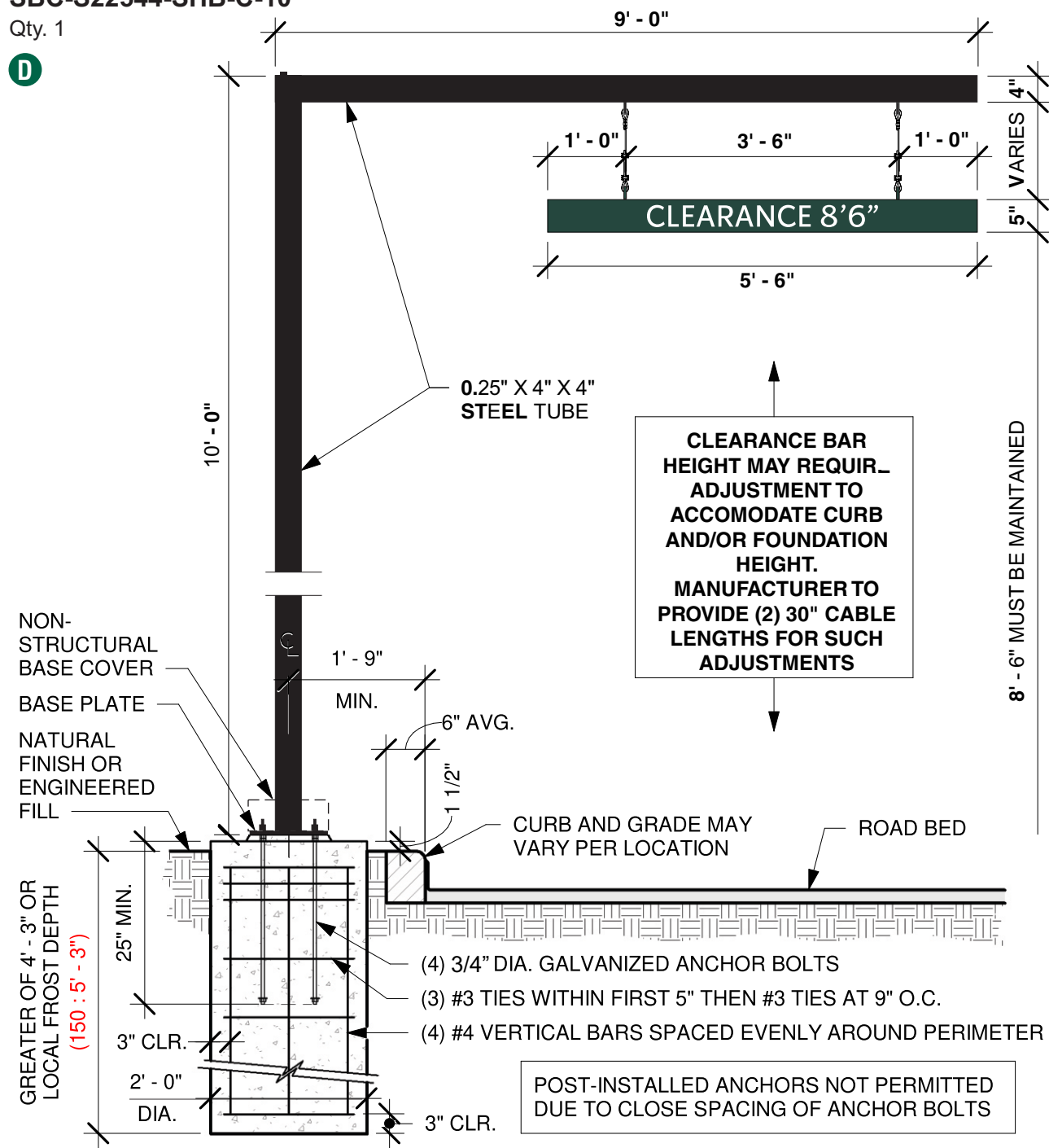
- Painted Pantone #560 (satin finish)
- Painted Pantone 419 Black (RAL 7021M) (satin finish)
- Clear Acrylic (push thru)
- 3M White Translucent Vinyl (first surface)
- 3M Diffuser Film (second surface)

REVOLUTION CLEARANCE BAR

SBC-S22544-SHB-C-10

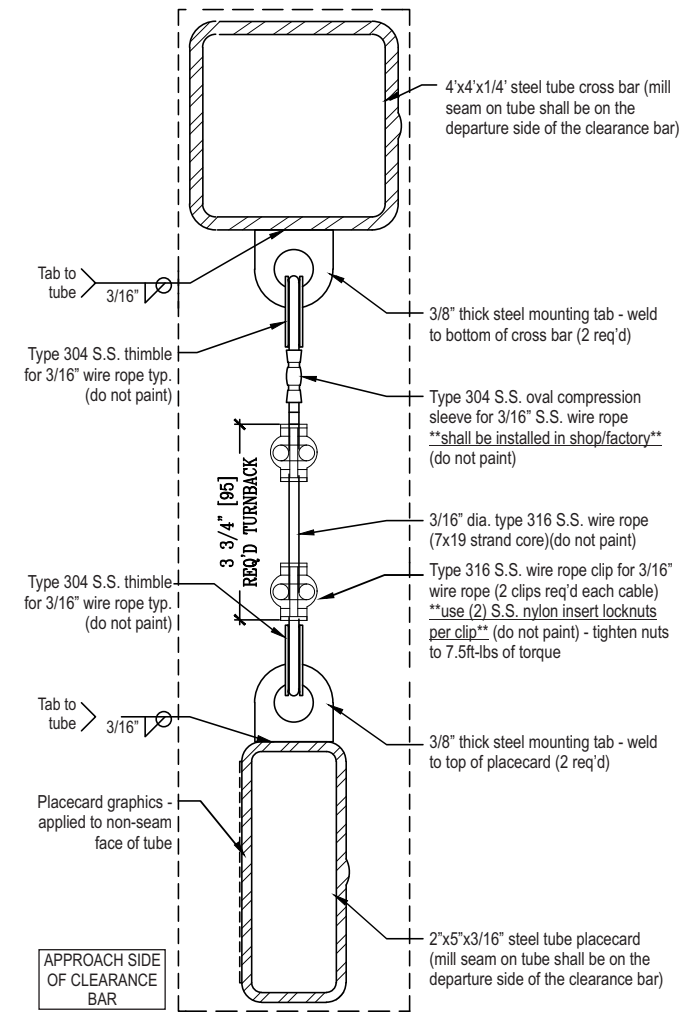
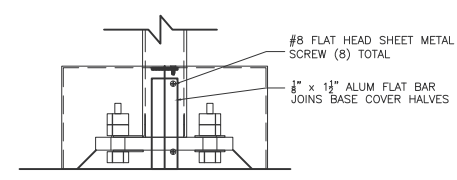
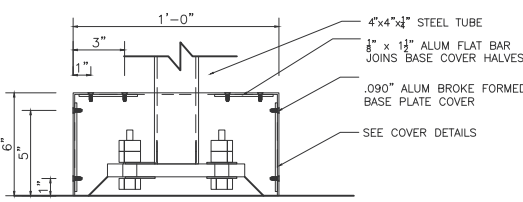
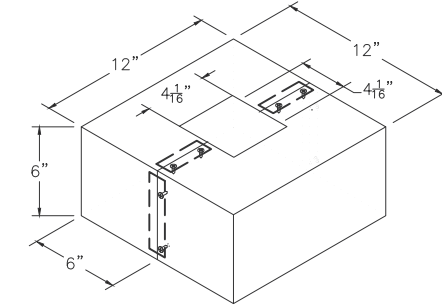
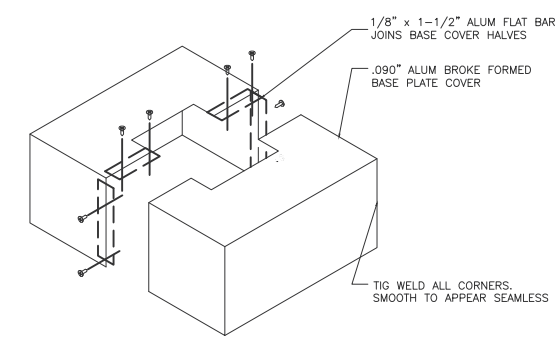
Qty. 1

D



CLEARANCE BAR HEIGHT MAY REQUIRE ADJUSTMENT TO ACCOMODATE CURB AND/OR FOUNDATION HEIGHT. MANUFACTURER TO PROVIDE (2) 30" CABLE LENGTHS FOR SUCH ADJUSTMENTS

8' - 6" MUST BE MAINTAINED

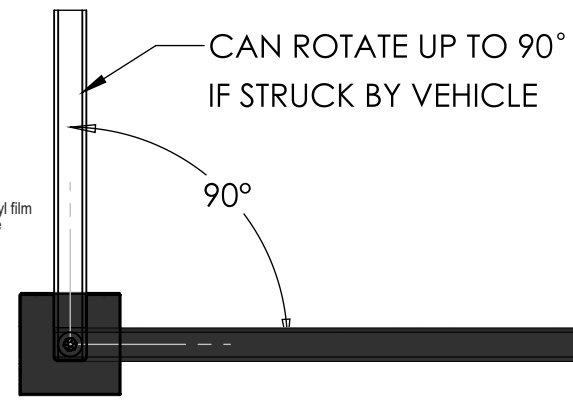


End Section View

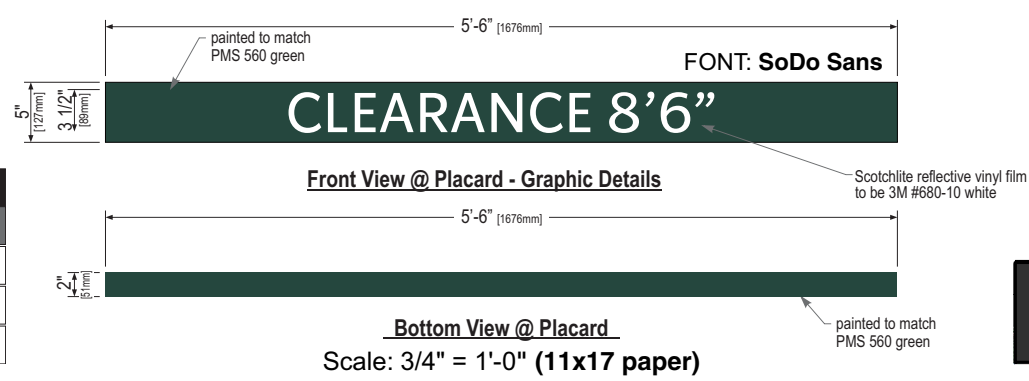
ASSUMED CONDITIONS DESIGN LOADS

- 115 MPH wind load (150 MPH Wind Load)
 - Category II, Exposure C
 - Est. Combined Weight of Canopy & DOS: 993 Lbs.
 - Concrete Strength: MN 3000 PSI @ 28 Days
 - 2012 International Building Code, ASCE 7-10
 - Vertical Soil Bearing Pressure: 2000 PSF
- Rotate Footing Bolt pattern Relative To Drive Lane Per Site Plan & Signage Configuration Details.
- Route Conduit Per Electrical Site Plan Provide 3" Stub-Up
- GC Responsible For Foundations & Footings On All Menu Boards & Drive-Thru Elements. Signage Vendor To Supply Templates & Install Menu Boards Only.

Dimensions in Red Are For 150 MPH Wind Load



COLOR LEGEND		
	PMS/PAINT	VINYL
	PMS 560 C	NA
	PSB 6865/ SATIN BLACK	3M 3630-22
	REFL. WHITE	3M 680-10



HILTONDISPLAYS
 125 HILLSIDE DRIVE • GREENVILLE SC 29607
 P 800 353 9132 • F 864 242 2204
 www.hiltondisplays.com

QID 24-70784

JOB NAME

Starbucks 84041

LOCATION

1882 Cth Es
East Troy, WI 53120

CUSTOMER CONTACT

SALESMAN / PM

Jo Hall

DESIGNER

Brady Taylor

DWG. DATE

2-4-24

REV. DATE / REVISION

SCALE

As Noted

FILE

2024/Starbucks/Locations/
East Troy WI/24-70784/
SB East Troy WI 24-70784

DESIGN SPECIFICATIONS ACCEPTED BY:

EST: CLIENT:

SLS/PM: LANDLORD:

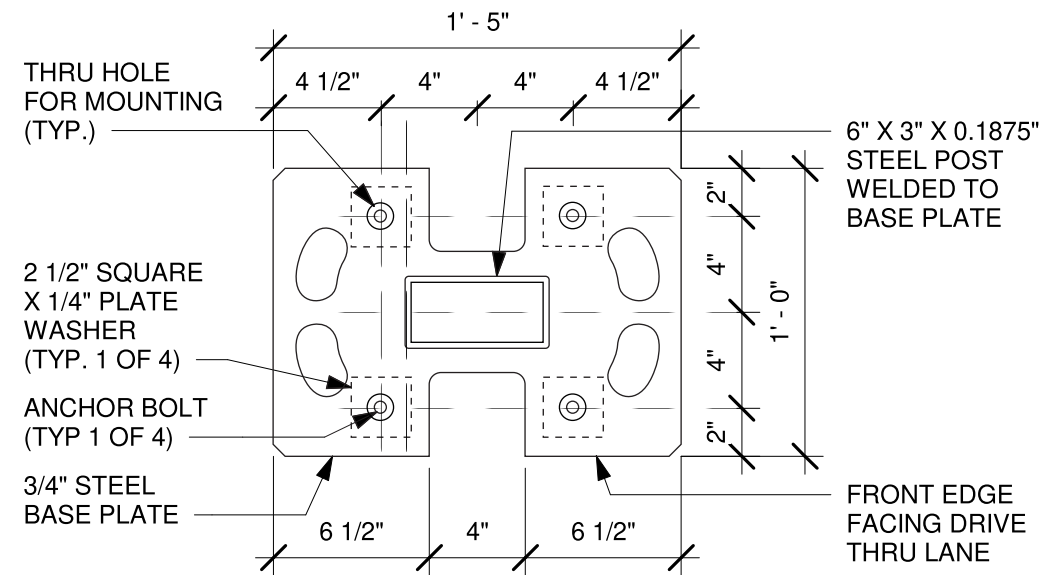
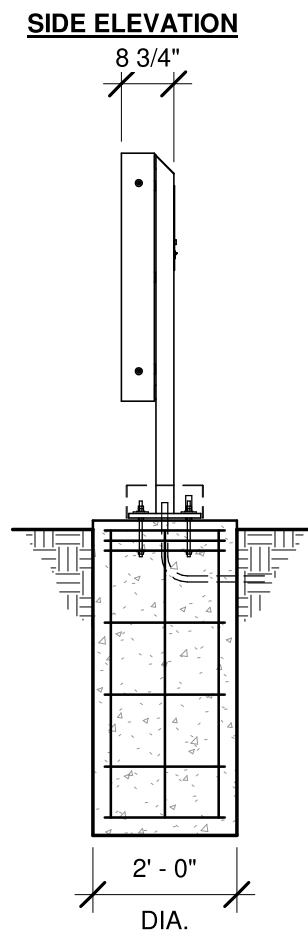
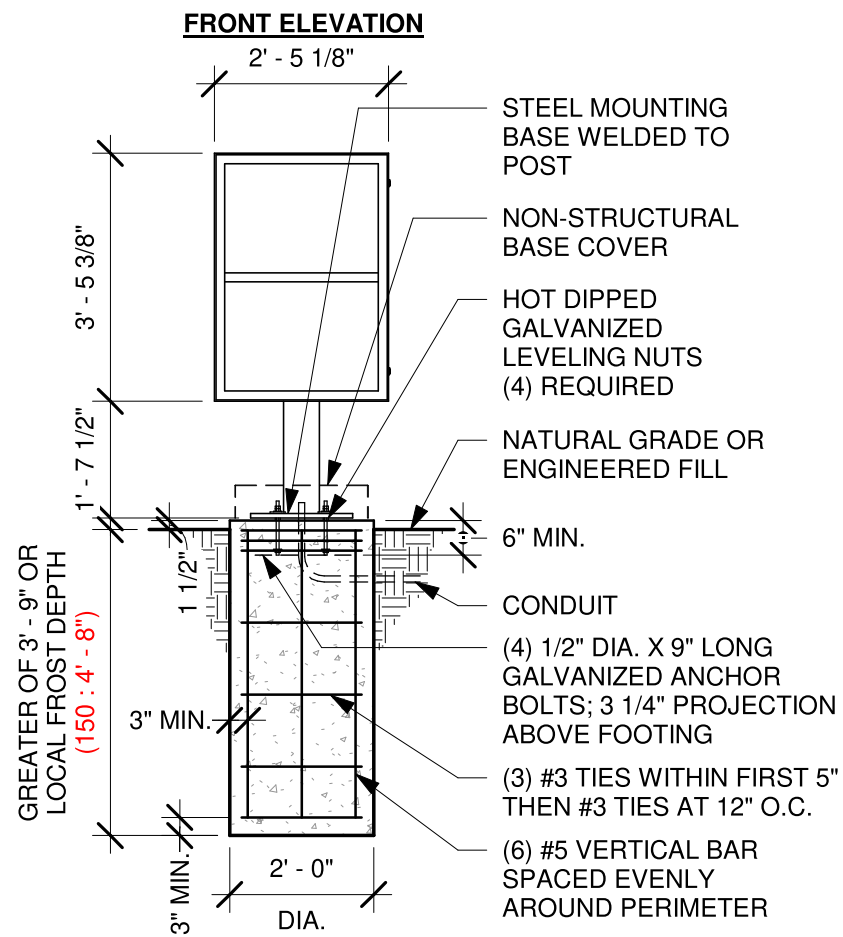
THE INTENT OF THIS DRAWING IS TO SHOW A CONCEPTUAL REPRESENTATION OF THE PROPOSED SIGNAGE. DUE TO VARIATIONS IN PRINTING DEVICES AND SUBSTRATES, THE FINISHED PRODUCT MAY DIFFER SLIGHTLY FROM DRAWING.

UL Underwriters Laboratories Inc. DRY DAMP WET

PRE-MENU BOARD - INSTALL ONLY

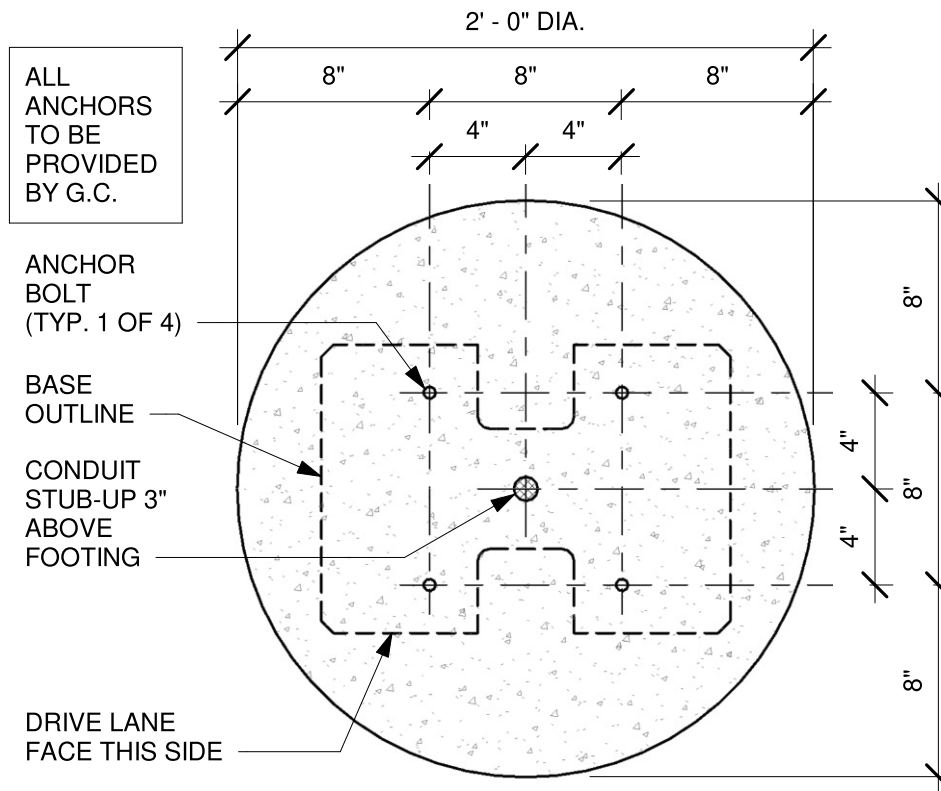
Qty. 1

E



BASE PLATE

scale: 1 1/2" = 1'



BOLT PATTERN (TOP VIEW)

Scale: 1 1/2" = 1'-0"

DT PRE-MENU GROUND FOOTING

Scale: 3/8" = 1'-0"



HILTONDISPLAYS
125 HILLSIDE DRIVE • GREENVILLE SC 29607
P 800 353 9132 • F 864 242 2204
www.hiltondisplays.com

QID 24-70784

JOB NAME

Starbucks 84041

LOCATION

1882 Cth Es
East Troy, WI 53120

CUSTOMER CONTACT

SALESMAN / PM

Jo Hall

DESIGNER

Brady Taylor

DWG. DATE

2-4-24

REV. DATE / REVISION

SCALE

As Noted

FILE

2024/Starbucks/Locations/
East Troy WI/24-70784/
SB East Troy WI 24-70784

DESIGN SPECIFICATIONS ACCEPTED BY:

EST: CLIENT:

SLS/PM: LANDLORD:

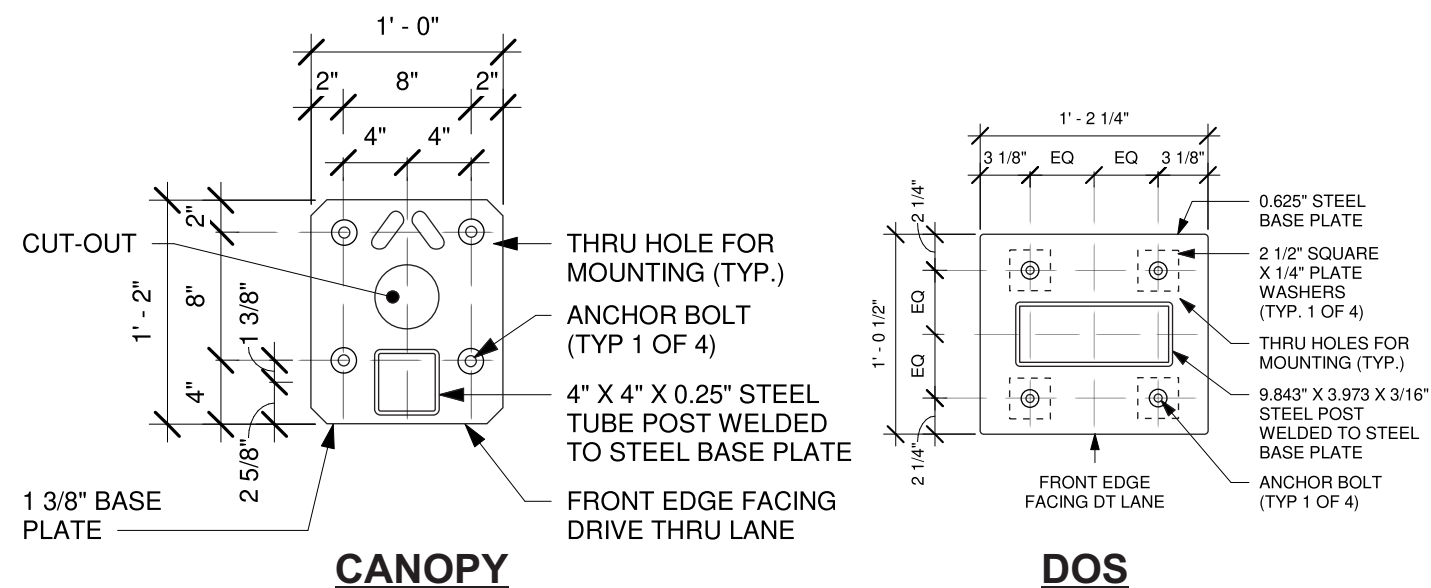
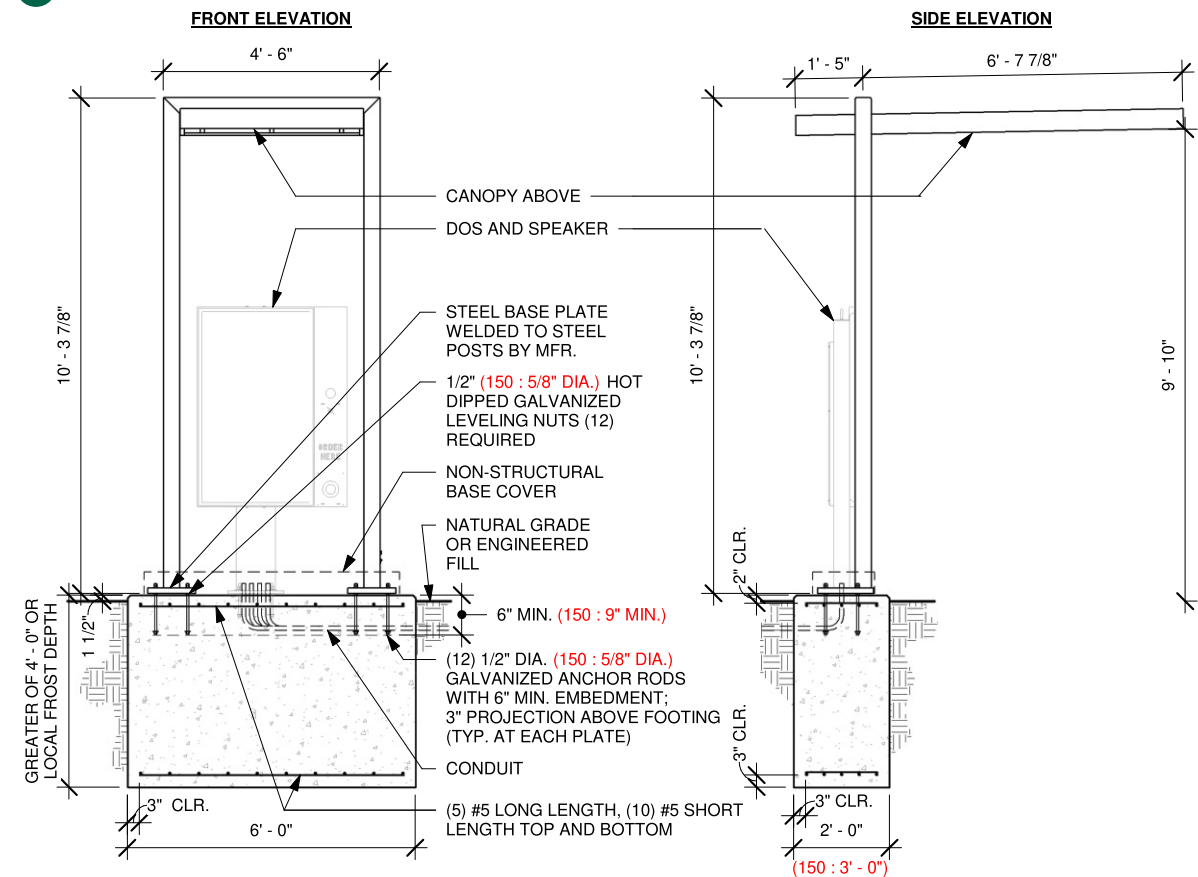
THE INTENT OF THIS DRAWING IS TO SHOW A CONCEPTUAL REPRESENTATION OF THE PROPOSED SIGNAGE. DUE TO VARIATIONS IN PRINTING DEVICES AND SUBSTRATES, THE FINISHED PRODUCT MAY DIFFER SLIGHTLY FROM DRAWING.



CANOPY - INSTALL ONLY

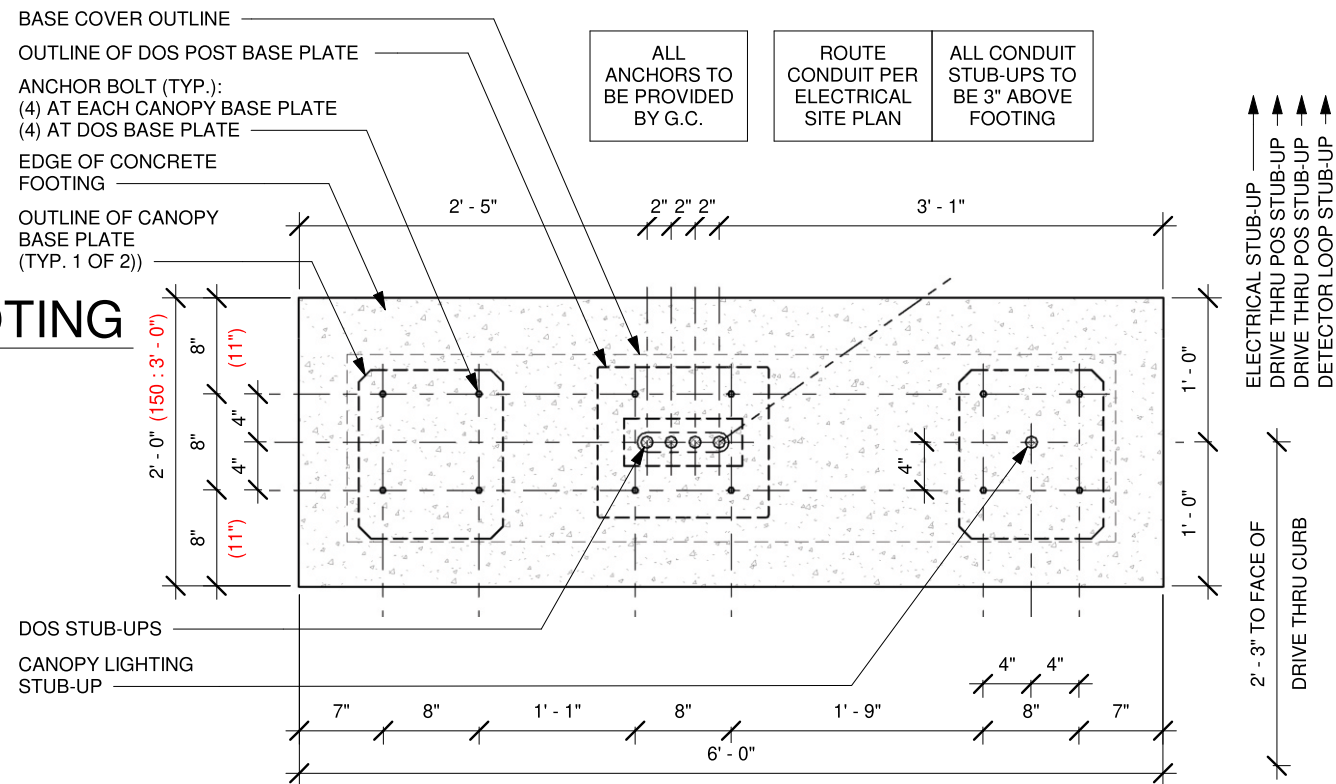
Qty. 1

F



BASE PLATE

Scale: 1" = 1'-0"



BOLT PATTERN (TOP VIEW)

scale: 3/4" = 1'

DT DIGITAL ORDER SCREEN CANOPY GROUND FOOTING

scale: 1/4" = 1'



HILTONDISPLAYS

125 HILLSIDE DRIVE • GREENVILLE SC 29607
P 800 353 9132 • F 864 242 2204
www.hiltondisplays.com

QID 24-70784

JOB NAME

Starbucks 84041

LOCATION

1882 Cth Es
East Troy, WI 53120

CUSTOMER CONTACT

SALESMAN / PM

Jo Hall

DESIGNER

Brady Taylor

DWG. DATE

2-4-24

REV. DATE / REVISION

SCALE

As Noted

FILE

2024/Starbucks/Locations/
East Troy WI/24-70784/
SB East Troy WI 24-70784

DESIGN SPECIFICATIONS ACCEPTED BY:

EST: CLIENT:

SLS/PM: LANDLORD:

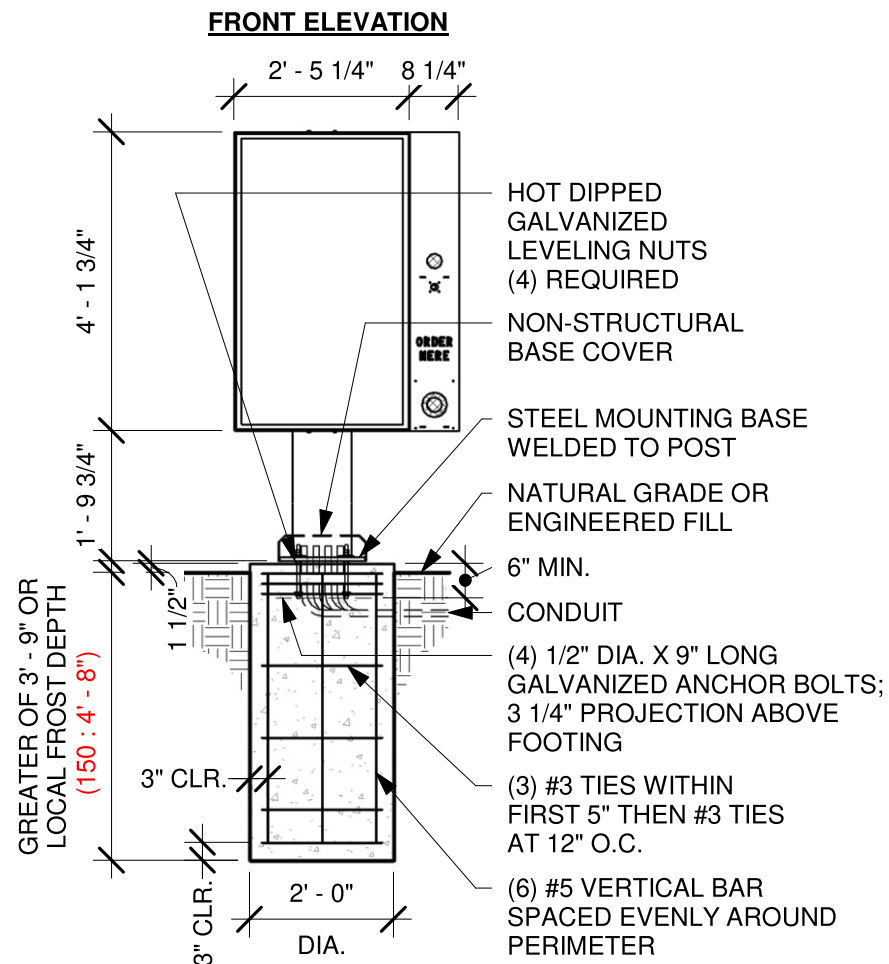
THE INTENT OF THIS DRAWING IS TO SHOW A CONCEPTUAL REPRESENTATION OF THE PROPOSED SIGNAGE. DUE TO VARIATIONS IN PRINTING DEVICES AND SUBSTRATES, THE FINISHED PRODUCT MAY DIFFER SLIGHTLY FROM DRAWING.



DOS - INSTALL ONLY Note: - All steel shall be galvanized

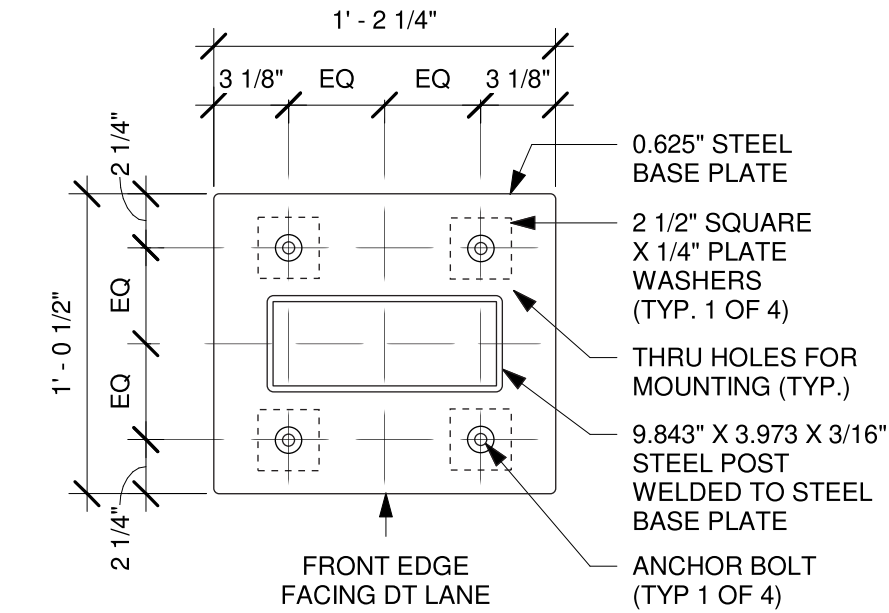
Qty. 1

F



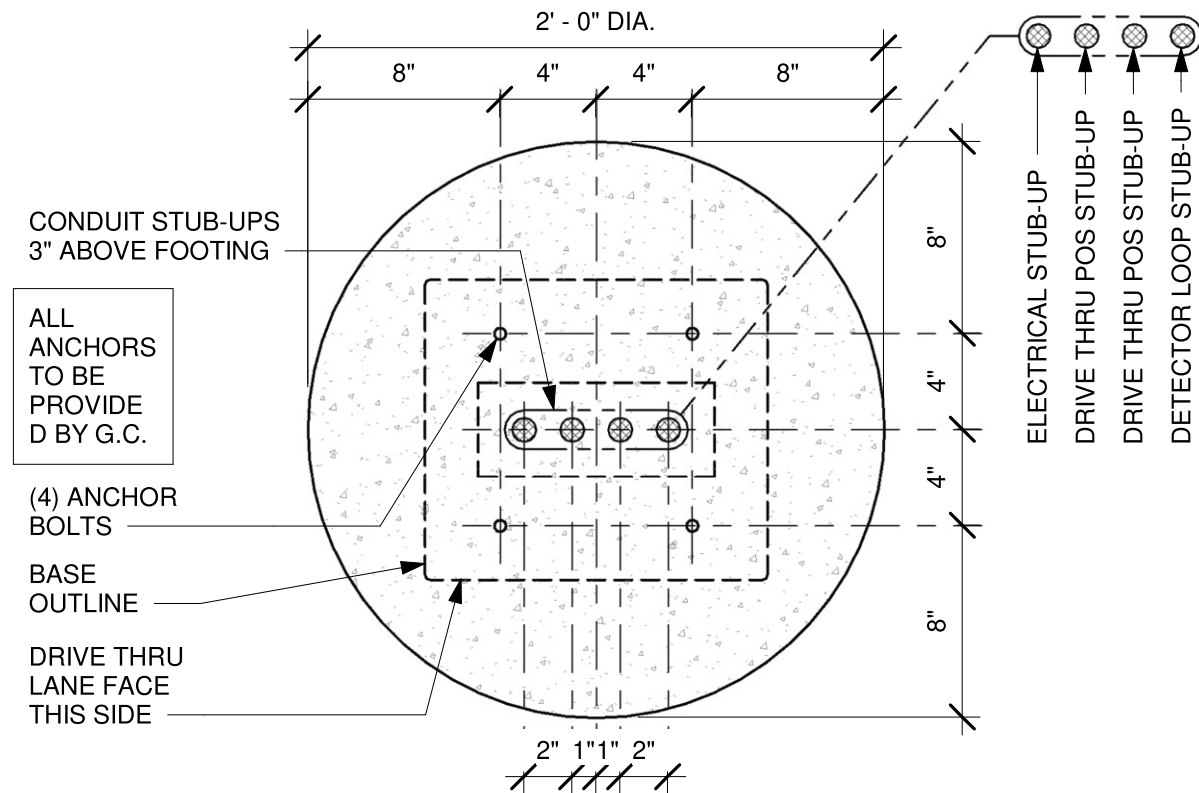
DT DIGITAL ORDER SCREEN POST GROUND FOOTING

Scale: 3/8" = 1'-0"



BASE PLATE

Scale: 1 1/2" = 1'-0"



BOLT PATTERN (TOP VIEW)

Scale: 1 1/2" = 1'-0"

HILTONDISPLAYS
 125 HILLSIDE DRIVE • GREENVILLE SC 29607
 P 800 353 9132 • F 864 242 2204
 www.hiltondisplays.com

QID 24-70784

JOB NAME

Starbucks 84041

LOCATION

1882 Cth Es
 East Troy, WI 53120

CUSTOMER CONTACT

SALESMAN / PM

Jo Hall

DESIGNER

Brady Taylor

DWG. DATE

2-4-24

REV. DATE / REVISION

SCALE

As Noted

FILE

2024/Starbucks/Locations/
 East Troy WI/24-70784/
 SB East Troy WI 24-70784

DESIGN SPECIFICATIONS ACCEPTED BY:

EST: CLIENT:

SLS/PM: LANDLORD:

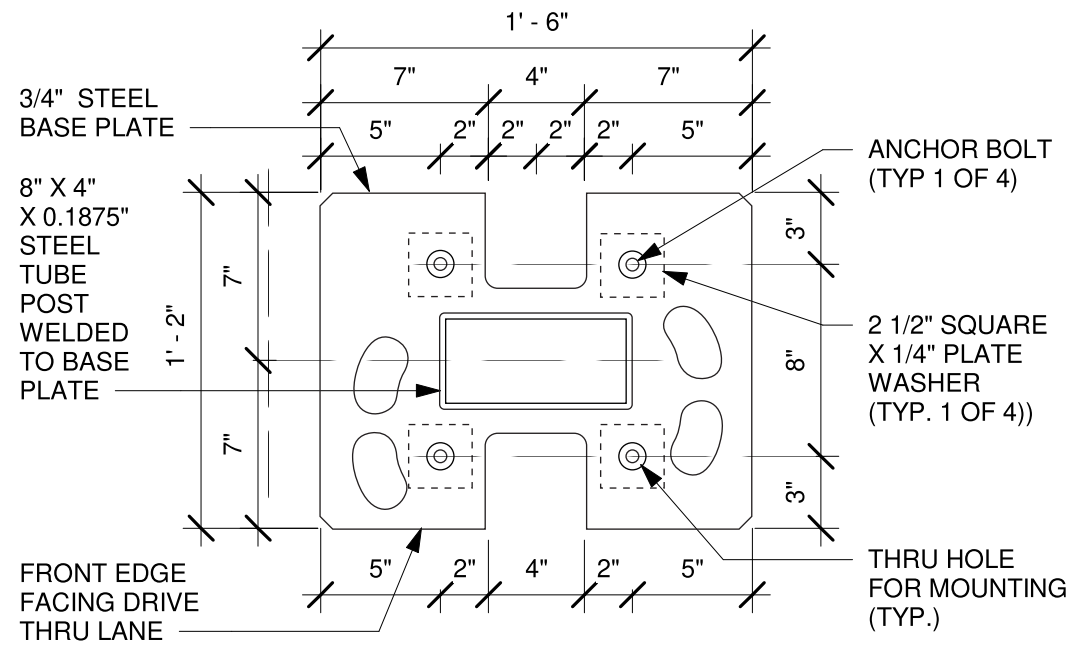
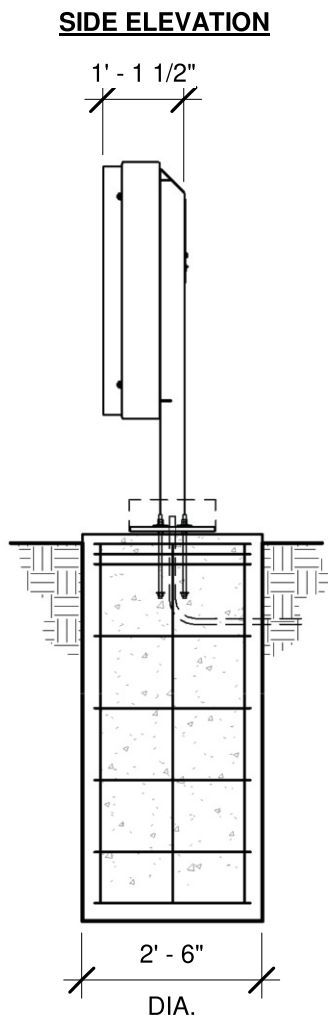
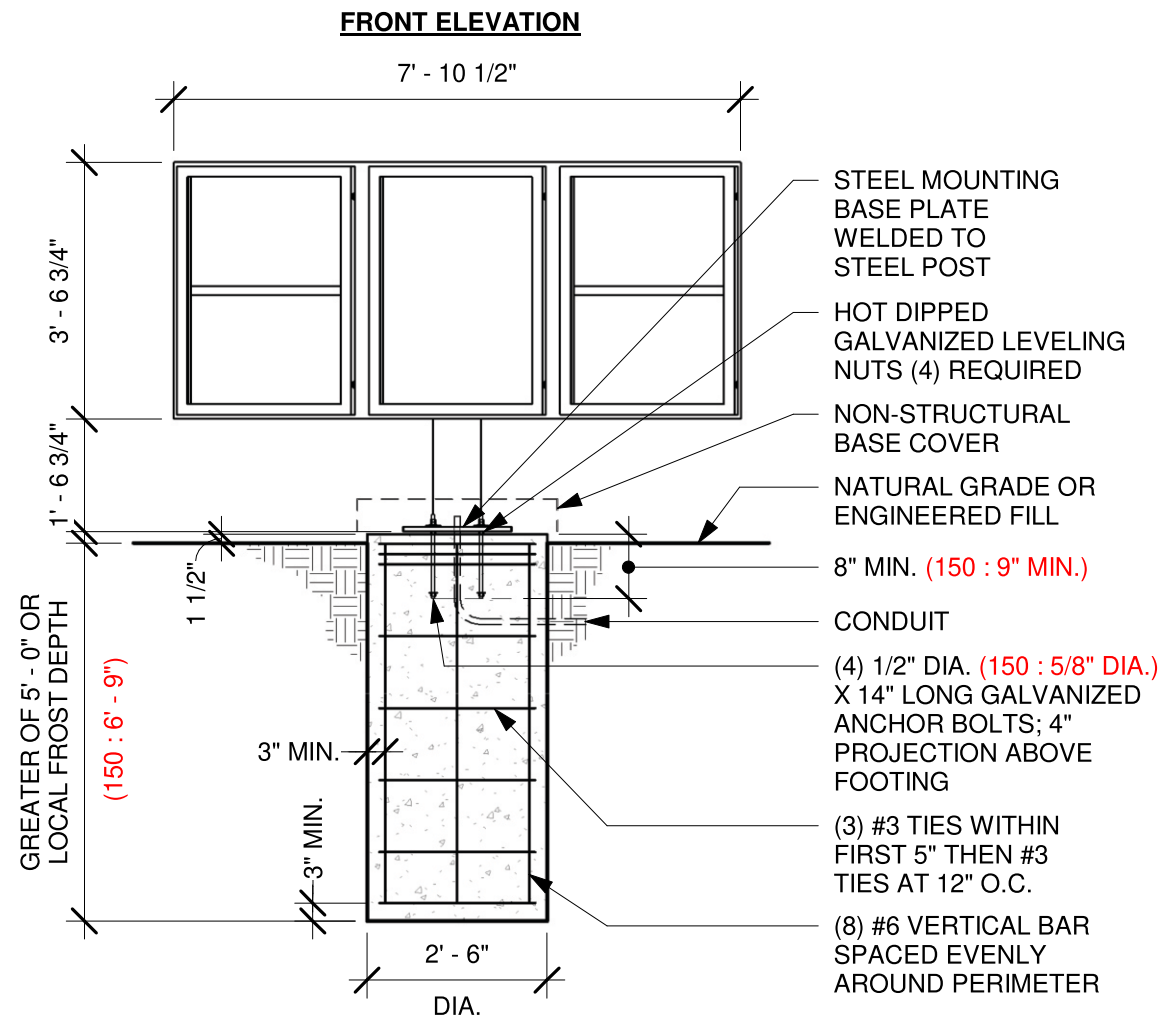
THE INTENT OF THIS DRAWING IS TO SHOW A CONCEPTUAL REPRESENTATION OF THE PROPOSED SIGNAGE. DUE TO VARIATIONS IN PRINTING DEVICES AND SUBSTRATES, THE FINISHED PRODUCT MAY DIFFER SLIGHTLY FROM DRAWING.



MENU BOARD - INSTALL ONLY Note: - All steel shall be A36 Galvanized or A304 Stainless Steel

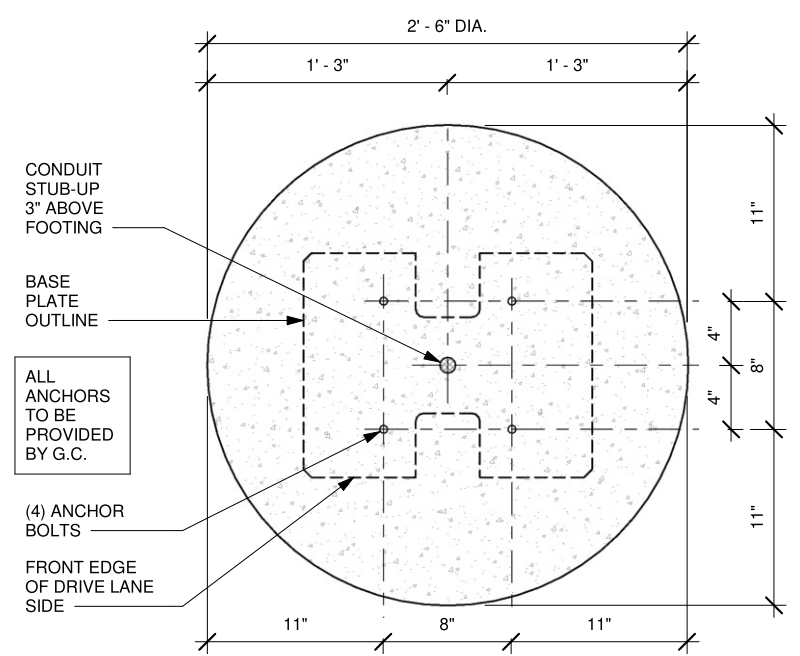
Qty. 1

G



BASE PLATE

scale: 1 1/2" = 1'



BOLT PATTERN (TOP VIEW)

scale: 1" = 1'



HILTONDISPLAYS
 125 HILLSIDE DRIVE • GREENVILLE SC 29607
 P 800 353 9132 • F 864 242 2204
 www.hiltondisplays.com

QID 24-70784

JOB NAME

Starbucks 84041

LOCATION

1882 Cth Es
 East Troy, WI 53120

CUSTOMER CONTACT

SALESMAN / PM

Jo Hall

DESIGNER

Brady Taylor

DWG. DATE

2-4-24

REV. DATE / REVISION

SCALE

As Noted

FILE

2024/Starbucks/Locations/
 East Troy WI/24-70784/
 SB East Troy WI 24-70784

DESIGN SPECIFICATIONS ACCEPTED BY:

EST: CLIENT:

SLS/PM: LANDLORD:

THE INTENT OF THIS DRAWING IS TO SHOW A CONCEPTUAL REPRESENTATION OF THE PROPOSED SIGNAGE. DUE TO VARIATIONS IN PRINTING DEVICES AND SUBSTRATES, THE FINISHED PRODUCT MAY DIFFER SLIGHTLY FROM DRAWING.

UL Underwriters Laboratories Inc.

DRY
 DAMP
 WET

18" x 12" PARKING SIGN

SBC-PK-1812-FP

Qty. 3



1 Front View
SCALE: 3" = 1'-0"

SPECIFICATIONS

- A. .090" ALUMINUM PARKING SIGN TO BE PAINTED TO PMS 560c
- B. FACE TO HAVE APPLIED DIGITALLY PRINTED VINYL GRAPHICS ON WHITE REFLECTIVE VINYL w/5/16" WHITE REFLECTIVE BORDER.
- C. SIGN PANEL TO BE FASTENED TO U-CHANNEL POST W/ 5/16"x2" BOLTS (QTY. 2)



HILTONDISPLAYS
125 HILLSIDE DRIVE • GREENVILLE SC 29607
P 800 353 9132 • F 864 242 2204
www.hiltondisplays.com

QID 24-70784

JOB NAME

Starbucks 84041

LOCATION

1882 Cth Es
East Troy, WI 53120

CUSTOMER CONTACT

SALESMAN / PM

Jo Hall

DESIGNER

Brady Taylor

DWG. DATE

2-4-24

REV. DATE / REVISION

SCALE

As Noted

FILE

2024/Starbucks/Locations/
East Troy WI/24-70784/
SB East Troy WI 24-70784

DESIGN SPECIFICATIONS ACCEPTED BY:

EST:	CLIENT:
SLS/PM:	LANDLORD:

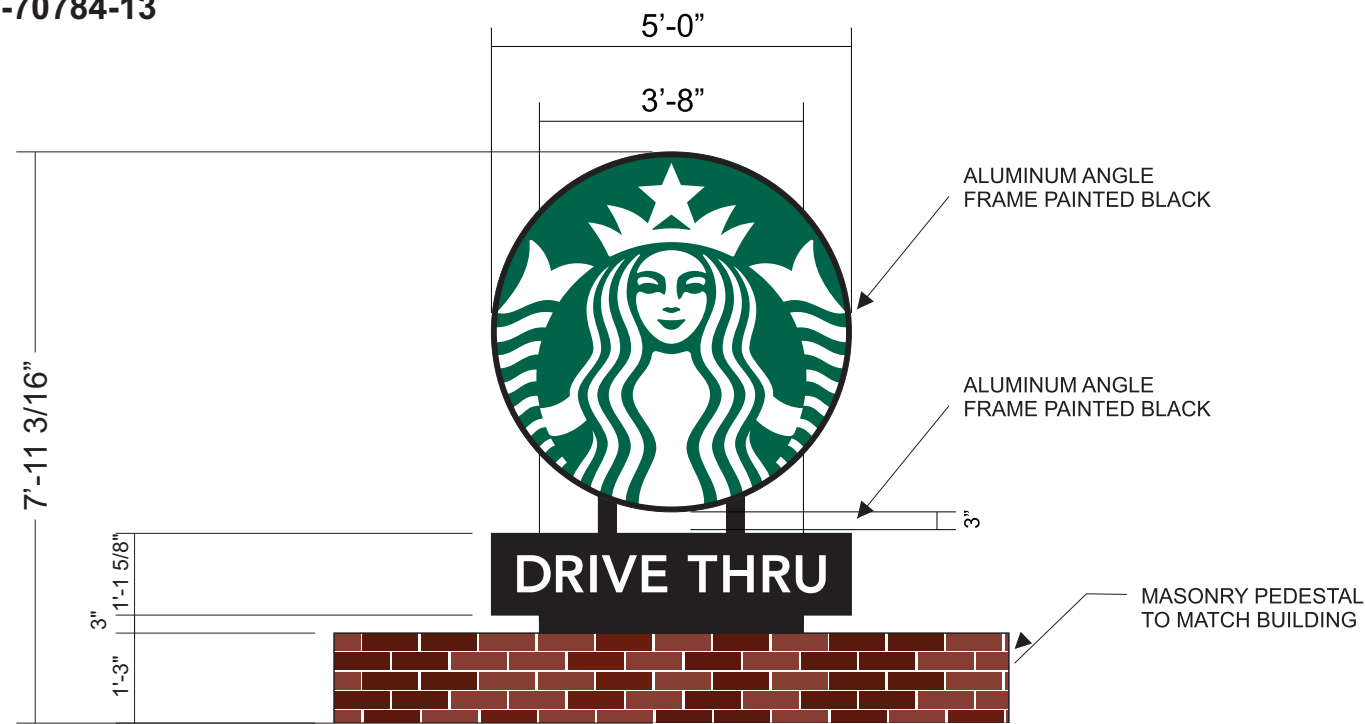
THE INTENT OF THIS DRAWING IS TO SHOW A CONCEPTUAL REPRESENTATION OF THE PROPOSED SIGNAGE. DUE TO VARIATIONS IN PRINTING DEVICES AND SUBSTRATES, THE FINISHED PRODUCT MAY DIFFER SLIGHTLY FROM DRAWING.



MONUMENT

SBC-24-70784-13

Qty. 1

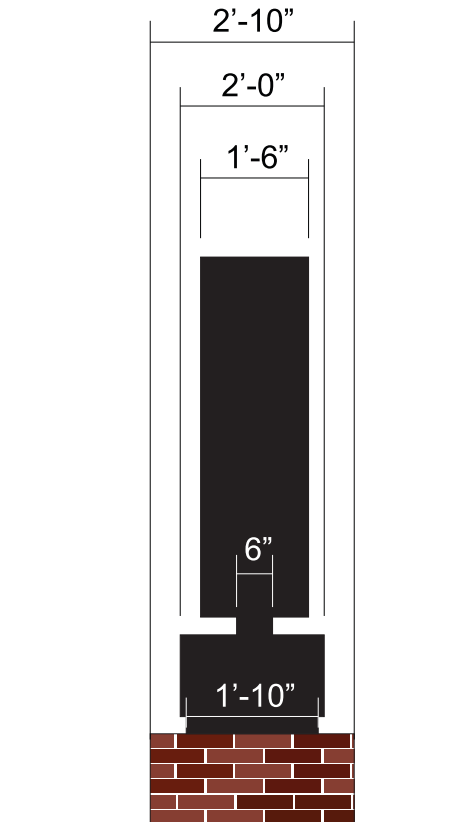


Scale: 3/8"=1'



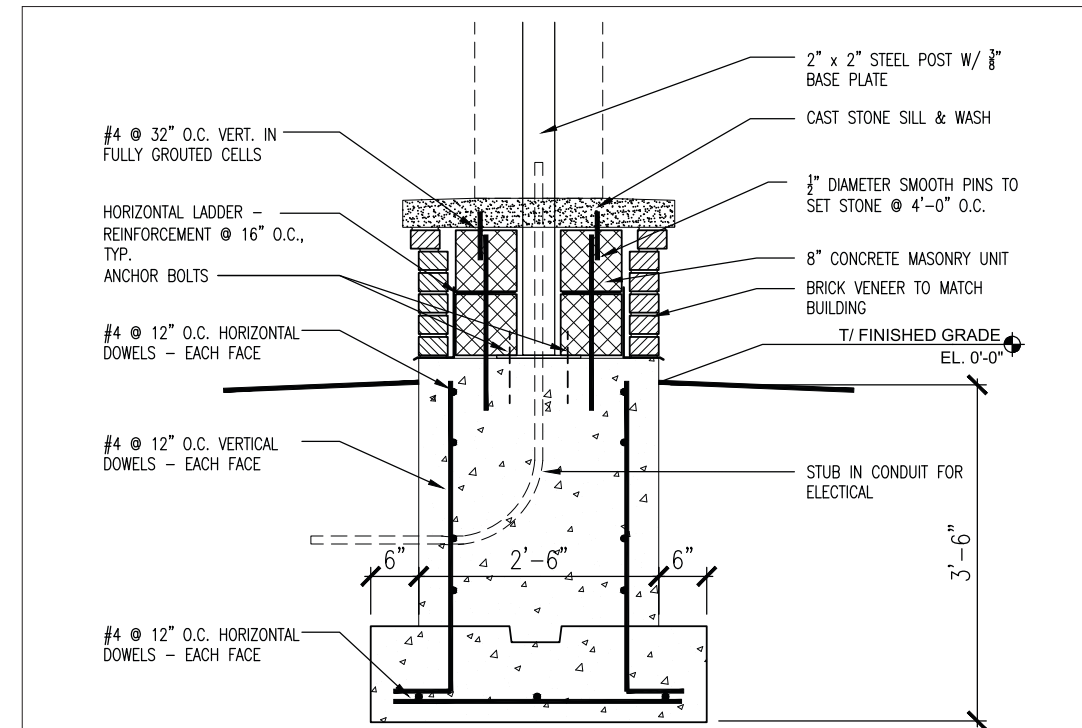
COLOR LEGEND		
	PMS/PAINT	VINYL
	PMS 3425 C	3M 3630-76
	RAL 7021M	3M 3630-22
	PMS WHITE	3M 3630-20/ 7725-10 TRANSLUCENT OPAQUE
	PMS 369 C	NA
	REFL. WHITE	3M 680-10

FOUNDATION, ANCHOR BOLTS, MASONRY,
CONCRETE CAP, AND ELECTRICAL BY OTHERS



SIDE VIEW

MOUNTING TO BE
CONFIRMED WITH ENGINEERING



SECTION - MONUMENT SIGN

SCALE 1/2" = 1'-0"

HILTONDISPLAYS

125 HILLSIDE DRIVE • GREENVILLE SC 29607
P 800 353 9132 • F 864 242 2204
www.hiltondisplays.com

QID 24-70784

JOB NAME

Starbucks 84041

LOCATION

1882 Cth Es
East Troy, WI 53120

CUSTOMER CONTACT

SALESMAN / PM

Jo Hall

DESIGNER

Brady Taylor

DWG. DATE

2-4-24

REV. DATE / REVISION

SCALE

As Noted

FILE

2024/Starbucks/Locations/
East Troy WI/24-70784/
SB East Troy WI 24-70784

DESIGN SPECIFICATIONS ACCEPTED BY:

EST:	CLIENT:
SLS/PM:	LANDLORD:

THE INTENT OF THIS DRAWING IS TO SHOW A CONCEPTUAL REPRESENTATION OF THE PROPOSED SIGNAGE. DUE TO VARIATIONS IN PRINTING DEVICES AND SUBSTRATES, THE FINISHED PRODUCT MAY DIFFER SLIGHTLY FROM DRAWING.

