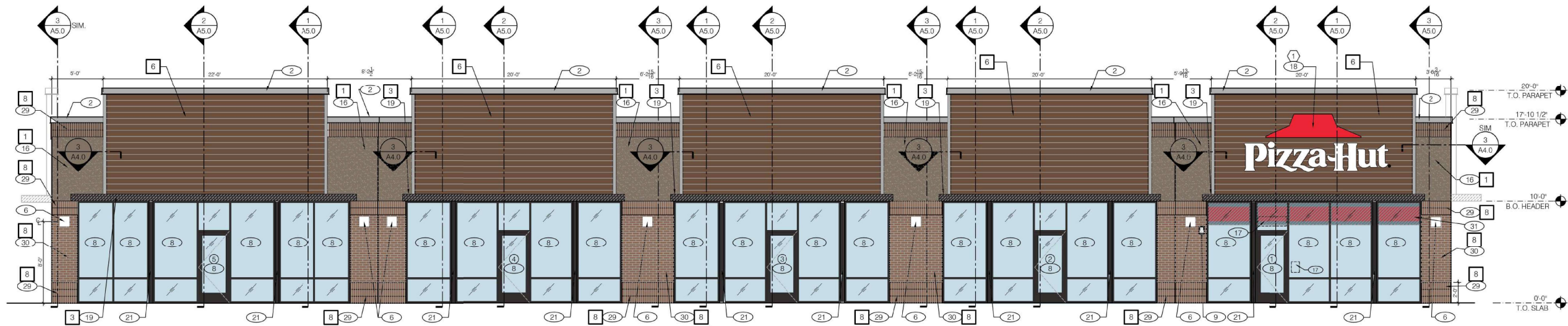




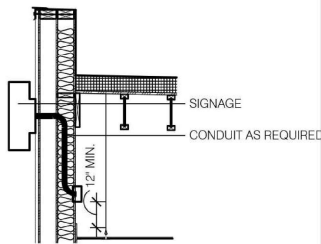
EYM Realty of WI.

SIDE ELEVATION: 2,780sf
 687sf GLASS 25%
 234sf EIFS 8%
 869sf BRICK 32%
 990sf FIBERCEMENT 35%

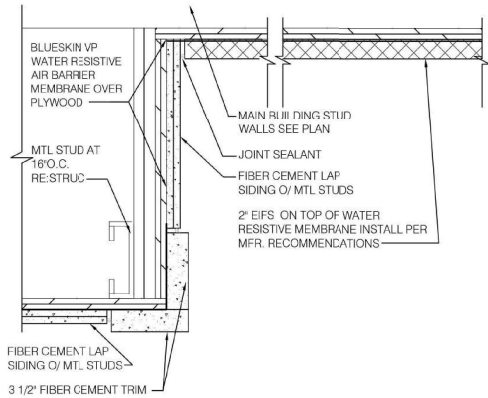


FRONT/ NORTH ELEVATION 3/16"=1'-0" 1

NOTE
 SIGNAGE VENDOR TO PROVIDE TRANSFORMERS TO GO PRIOR TO INTERIOR DRYWALLING. GC TO INSTALL TRANSFORMERS 12" MINIMUM ABOVE TRUSS BEARING LINE AND STUB OUT ELECTRICAL PER LOCATIONS SHOWN. ROUTE ALL CONDUIT IN THE EXTERIOR WALL.
 NO CONDUIT IS TO PENETRATE THE ROOF.



SIGNAGE DETAIL NTS 2



WALL TRANSITION DETAIL 3\"/>

QTY	ITEM	ELEC	REMARKS
(1)	SCL-RH-30 PIZZA HUT SIGN SEE DTL. 2/A4.0	X	OWNER PROVIDED RSCS OR DIRECT MANUF & INSTALL BY PH APPROVED VENDOR.

SIGNAGE & AWNING SCHEDULE 4

ALLEN INDUSTRIES, INC
 49TH STREET NORTH
 CLEARWATER, FL 33762
 KEITH WHITLEY: 919-410-1234
 keith.whitley@allenindustries.com

FEDERAL HEALTH SIGN CO
 12704 DUPONT CIRCLE
 TAMPA FL 33626
 FIONA PALL: 813-855-4415
 fpall@federalhealth.com

ENTERA SIGNS
 1200 ENTERA DRIVE
 PANAMA CITY, FL 32401
 850-797-0779
 ALAN BRYANT: 334-796-3313
 alan.bryant@enterabrading.com

SIGN RESOURCE
 6135 DISTRICT BLVD.
 MAYWOOD, CA 90270
 RAMON ORTIZ: 323-326-6463
 rortiz@signresource.com

The plans, ideas, arrangements, and designs indicated or represented by this drawing are owned by, and are the property of EYM Group, Inc., and in connection with this specific project, and shall not be used in whole or in part, for any purpose for which they were not specifically issued without written permission from EYM Group, Inc.
 EYM Group, Inc. expressly reserves their common law copyright and other property rights in these plans, specifications & ideas. These documents are not to be reproduced, changed, or copied in any form or manner whatsoever, nor are they to be assigned to any third party without obtaining written permission or consent of EYM Group, Inc.

REVISION:	Mark	Date	By
1	▲	04/01/2022	EYM
2	▲	07/18/2022	EYM
3	▲	12/08/22	

PROJECT TITLE
PIZZA HUT

175 RYAN RD.
 OAK CREEK, WI 53154
 DATE: 02/17/22
 DRAWN BY: EYM
 SHEET TITLE

EXTERIOR ELEVATIONS

SHEET NO.
A4.0
 EYM Group, Inc.

SYMBOL	PRODUCT	MANUFACTURER	COLOR	ALTERNATE MFR.	REMARKS
1	EIFS	STO	TO MATCH SW 7514 'FOOTHILLS'	GC PROVIDED	
3	CUSTOM MTL CANOPY		TO MATCH STOREFRONT	GC PROVIDED	
6	ALLURA FIBER CEMENT SIDING	UFP HILLSBORO, LLC	TWO TONE BRAND SIDING	GC PROVIDED	CONTACT 254.580.2846
7	PAINT	SHERWIN WILLIAMS	FOOTHILLS #SW7514	GC PROVIDED	
8	MODULAR BRICK	ACME	RED SUNSET	GC PROVIDED	VELOUR TEXTURE

EXTERIOR FINISH SCHEDULE 6

MISCELLANEOUS
 A. SEE SCOPE OF WORK FOR RESPONSIBILITIES.
 B. CONTINUE WALL FINISHES BEHIND ALL SIGNS, LIGHT FIXTURES, LADDER, COLLECTOR HEADS, DOWNSPOUTS AND ELECTRICAL SWITCHGEAR/PANELS.
 C. REFER TO A8.1 FOR NATIONAL ACCOUNT PRICING CONTACTS.
 SEALERS (REFER TO SPECS)
 D. SEALANT AT ALL WALL AND ROOF PENETRATIONS.
 E. SEALANT AT ALL WINDOW AND DOOR FRAMES AT HEAD AND JAMB. DO NOT SEAL SILL @ WINDOWS.

LEGEND
 GO VENDOR SCOPE INCLUDES SUPPLY AND INSTALLATION OF CANOPIES, G.C. TO COORDINATE BLOCKING AND WORK OF ALL TRADES WITH THIS WORK.
 LAP & GAP SIDING - SEE EXTERIOR FINISH SCHEDULE ITEM #1
 EXTERIOR BUILDING FINISH. SEE EXTERIOR FINISH SCHEDULE ITEM #3

GENERAL NOTES 7

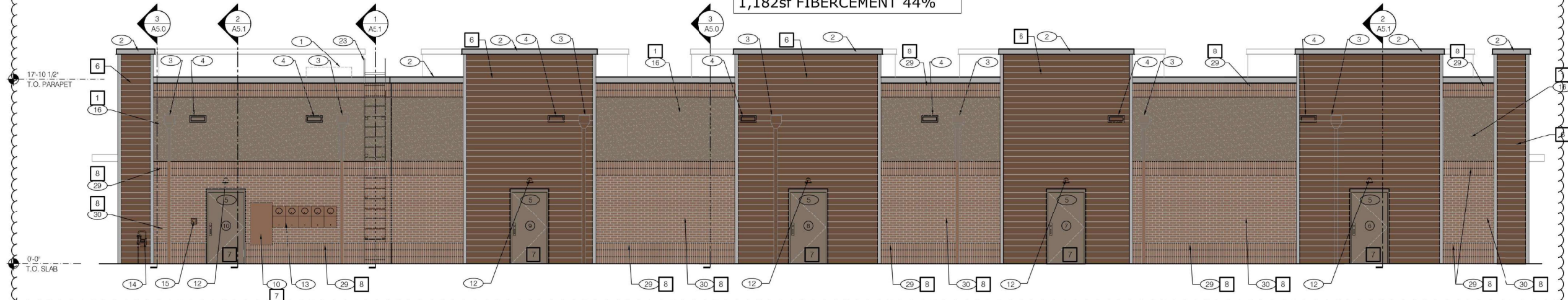
- ROOF-TOP EQUIPMENT. SEE MEP DRAWINGS
- FACTORY FINISH METAL PARAPET COPING "CLEAR ANODIZED ALUM." SEE DETAIL 2/A6.0
- PRE-FINISHED BLACK GALV. MTL. SCUPPER AND DOWNSPOUT PER PLUMBING CODE - EXTEND TO FACE OF CURB (6" MIN.) AT 45. RE: 9/A6.0
- PRE-FINISHED BLACK GALV. MTL. OVERFLOW SCUPPER PER PLUMBING CODE - RE: 18/A6.0
- HM. DOOR AND FRAME. RE: DOOR SCHEDULE 1/A1.1
- WALL LIGHTING. REF: ELEC. PLANS
- NOT USED
- ALUMINUM STOREFRONT DOOR AND/ OR WINDOW. RE: WINDOW TYPES 2/A1.1
- EMERGENCY LIGHTS MOUNTED 7'-2" A.F.F., SEE ELEC. SHEETS
- WALL SHALL BE FINISHED PRIOR TO INSTALLATION OF SWITCHGEAR
- NOT USED
- SECURITY LIGHTING AT REAR EXIT. RE: ELECTRICAL
- ELECTRICAL DISCONNECT & METER BANK
- GAS METER

- CO2 FILLER VALVE & COVER.
- EIFS (TYP) SEE WALL SECTIONS
- STREET NUMBERS, STORE HOURS, SECURITY DETAILS-PROVIDED AND INSTALLED BY BIG IMAGE GRAPHICS
- EXTERIOR SIGNAGE. SEE DETAIL 2/A4.0 (UNDER SEPARATE PERMIT) GC TO COORDINATE BLOCKING WITH SIGN VENDOR.
- METAL CANOPY BY GC (COLOR TO MATCH STOREFRONT) GC TO COORDINATE BLOCKING WITH CANOPY VENDOR.
- 0.09 MIN. ALUMINUM BREAK METAL TO MATCH STOREFRONT ALUMINUM FINISH
- NOT USED
- ROOF LADDER - REF WALL SECTION 1/A5.1
- NOT USED
- NOT USED
- ACME MODULAR BRICK SMOOTH TEXTURE SOLDIER BOND, BY ACME OR APPROVED EQUAL
- RED THREAD GRAPHIC DECALS SHOWN AS HATCHED, PROVIDED BY BIG IMAGE GRAPHICS & INSTALLED BY GC. REFERRED ON EQUIPMENT SCHEDULE, A2.0

KEYNOTES 8

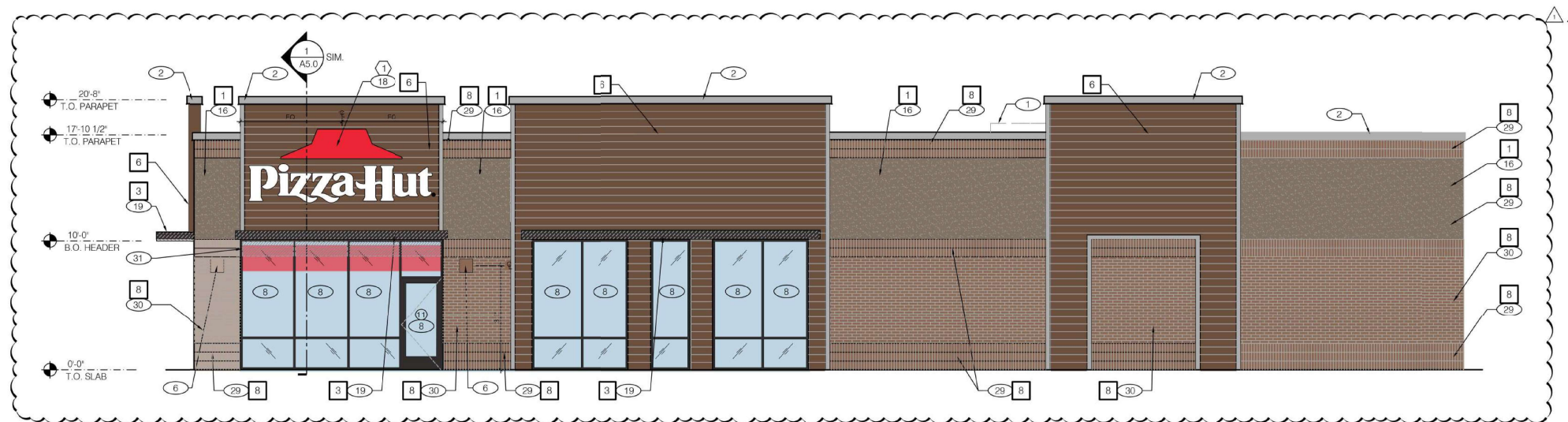
REAR ELEVATION: 2,686sf
 140sf DOORS 5%
 478sf EIFS 18%
 886sf BRICK 33%
 1,182sf FIBERCEMENT 44%

SEE SHEET A4.0 FOR KEYNOTES.



REAR/ SOUTH ELEVATION 3/16" = 1'-0" 1

SIDE ELEVATION: 1,930sf
 334sf GLASS 17%
 265sf EIFS 14%
 597sf BRICK 31%
 734sf FIBERCEMENT 38%



SIDE/ WEST ELEVATION 3/16" = 1'-0" 2

The plans, ideas, arrangements, and designs indicated or represented by this drawing are owned by, and are the property of EYM Group, Inc. and in connection with this specific project, and shall not be used in whole or in part, for any purpose for which they were not originally intended without written permission from EYM Group, Inc.

EYM Group, Inc. expressly reserves their common law copyright and other property rights in these plans, specifications, & ideas. These documents are not to be reproduced, changed, or copied in any form or manner whatsoever, nor are they to be assigned to any third party without obtaining written permission or consent of EYM Group, Inc.

REVISION:	Mark	Date	By
1	▲	04/01/2022	EYM
2	▲	07/19/2022	EYM
3	▲	12/08/22	

PROJECT TITLE
 PIZZA HUT

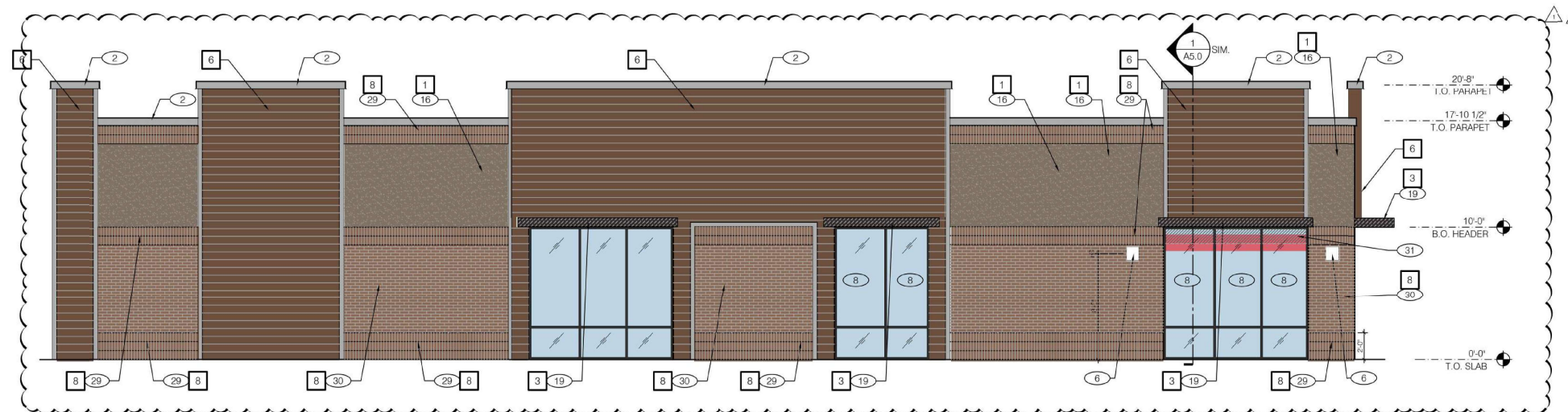
175 RYAN RD.
 OAK CREEK, WI 53154
 DATE 02/17/22
 DRAWN BY EYM
 SHEET TITLE

EXTERIOR ELEVATIONS

SHEET NO.
A4.1
 EYM Group, Inc.

THIS DOCUMENT IS THE PROPERTY OF EYM GROUP AND IS TO BE USED ONLY FOR THE PROJECT AND LOCATION SPECIFICALLY IDENTIFIED HEREIN. IT CONTAINS TRADE SECRETS AND CONFIDENTIAL INFORMATION. IT IS NOT TO BE REPRODUCED, COPIED, OR DISTRIBUTED IN ANY MANNER WITHOUT THE WRITTEN PERMISSION OF EYM GROUP. PLOTTED: THURSDAY, JANUARY 3, 2025 11:48 AM

SIDE ELEVATION: 1,949sf
 287sf GLASS 14%
 246sf EIFS 13%
 569sf BRICK 29%
 847sf FIBERCEMENT 44%



SIDE/ EAST ELEVATION 3/16" = 1'-0" 3