

1,380,000

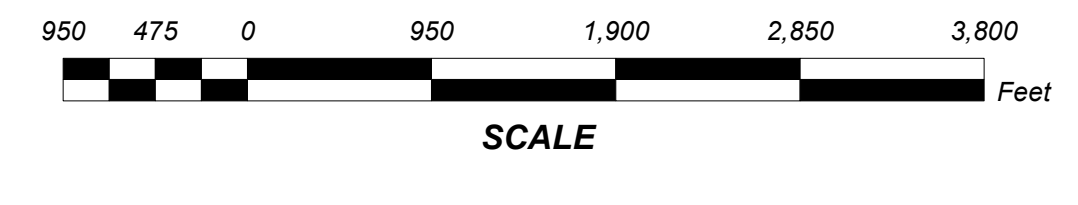
1,390,000

1,400,000

1,410,000

1,420,000

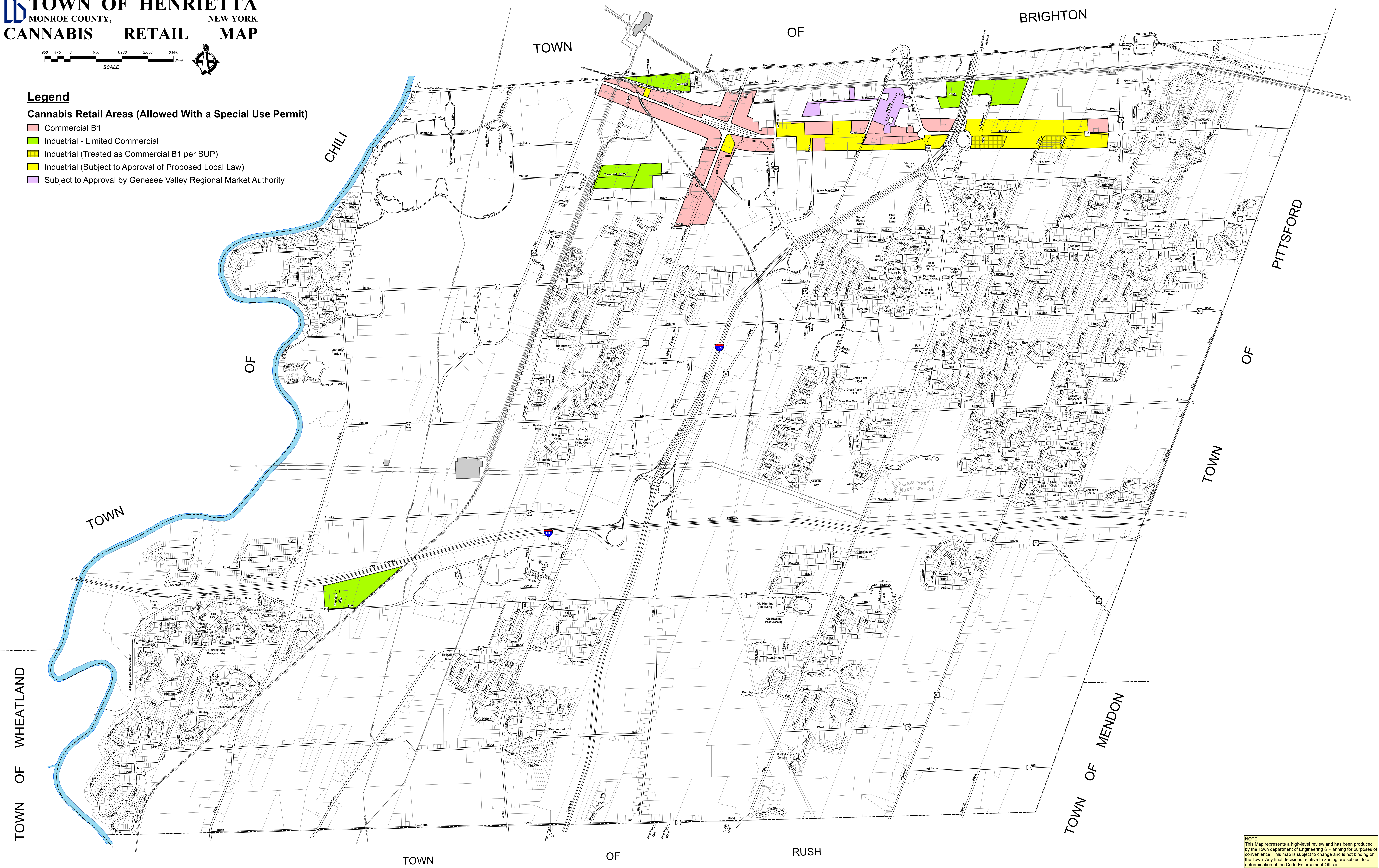
TOWN OF HENRIETTA
 MONROE COUNTY, NEW YORK
CANNABIS RETAIL MAP



Legend

Cannabis Retail Areas (Allowed With a Special Use Permit)

- Commercial B1
- Industrial - Limited Commercial
- Industrial (Treated as Commercial B1 per SUP)
- Industrial (Subject to Approval of Proposed Local Law)
- Subject to Approval by Genesee Valley Regional Market Authority



NOTE:
 This Map represents a high-level review and has been produced by the Town department of Engineering & Planning for purposes of convenience. This map is subject to change and is not binding on the Town. Any final decisions relative to zoning are subject to a determination of the Code Enforcement Officer.

1,380,000

1,390,000

1,400,000

1,410,000

1,420,000