

NOTES:

- LEGEND:

C.E. = Common Element

L.C.E. = Limited Common Element

- = RIGHT-OF-WAY LINE

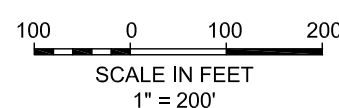
- = PROPERTY LINE



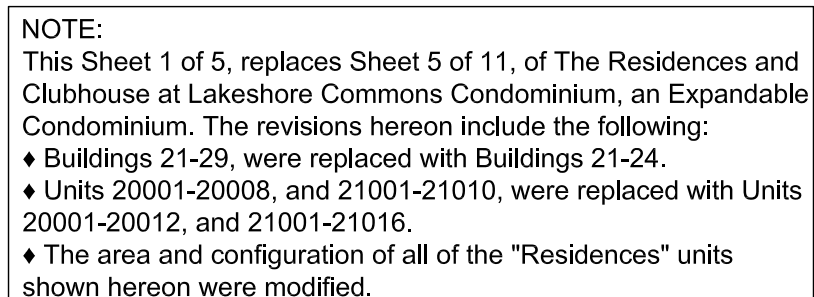
NORTH REFERENCED TO THE  
WISCONSIN STATE PLANE  
COORDINATE SYSTEM SOUTH ZONE,  
TAD 27, THE WEST LINE OF THE  
FRACTIONAL SW 1/4 OF SECTION  
24-05-22, BEARING N00°52'00"E.



SCALE: 1"=200'



# CONDOMINIUM MASTER UNITS LAYOUT



11-01-2022

LOT 2  
C.S.M. No. 9355

S:\\_SiteDsgn\Rinka Chung Architects\190575 Lake Vista Final\Survey\DWG\190575\_SR\_Residences\_Condo\_2\_Boundary\_Addendum\_1.dwg 11/2/2022 10:44 AM

# The Residences and Clubhouse at Lakeshore Commons Condominium, An Expandable Condominium, First Addendum

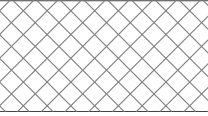
SHEET 2 OF 5 SHEETS

Units 1-6, and Units 11-21, and the Clubhouse, all being a part of of Lakeshore Commons Master Condominium, an Expandable Condominium, as recorded within the Milwaukee County Registry, and part of Lot 1, and all of Oulot 1, of Certified Survey Map No. 9355, recorded as Document No. 11174987, of the Milwaukee County Registry, and a part of the West 1/2 of the Fractional Southwest 1/4, all being a part of the Fractional Southwest 1/4 of Section 24, Township 5 North, Range 22 East, situated in the City of Oak Creek, Milwaukee County, Wisconsin.

NOTES:

- ◆ All areas within the condominium boundary are Common Element (C.E.) unless depicted as "Unit" or "L.C.E." Private roads and alleys, as shown, are C.E.
- ◆ Limited Common Elements are depicted, to the extent possible, on this plat as "L.C.E."
- ◆ The Common Elements and Limited Common Elements are further defined within the Declaration of Condominium at The Residences and Clubhouse at Lakeshore Commons Condominium, an Expandable Condominium, First Amendment, recorded simultaneously with this plat.
- ◆ That portion of Lot 1, of Certified Survey Map No. 9355, shown as Expansion Area, would need to be sub-divided from said Lot 1, prior to the proposed expansion into said Lot 1.
- ◆ All of the units are building pad boundaries
- ◆ The Clubhouse is the entirety of Lot 3.
- ◆ Field work completed on November 30, 2020.

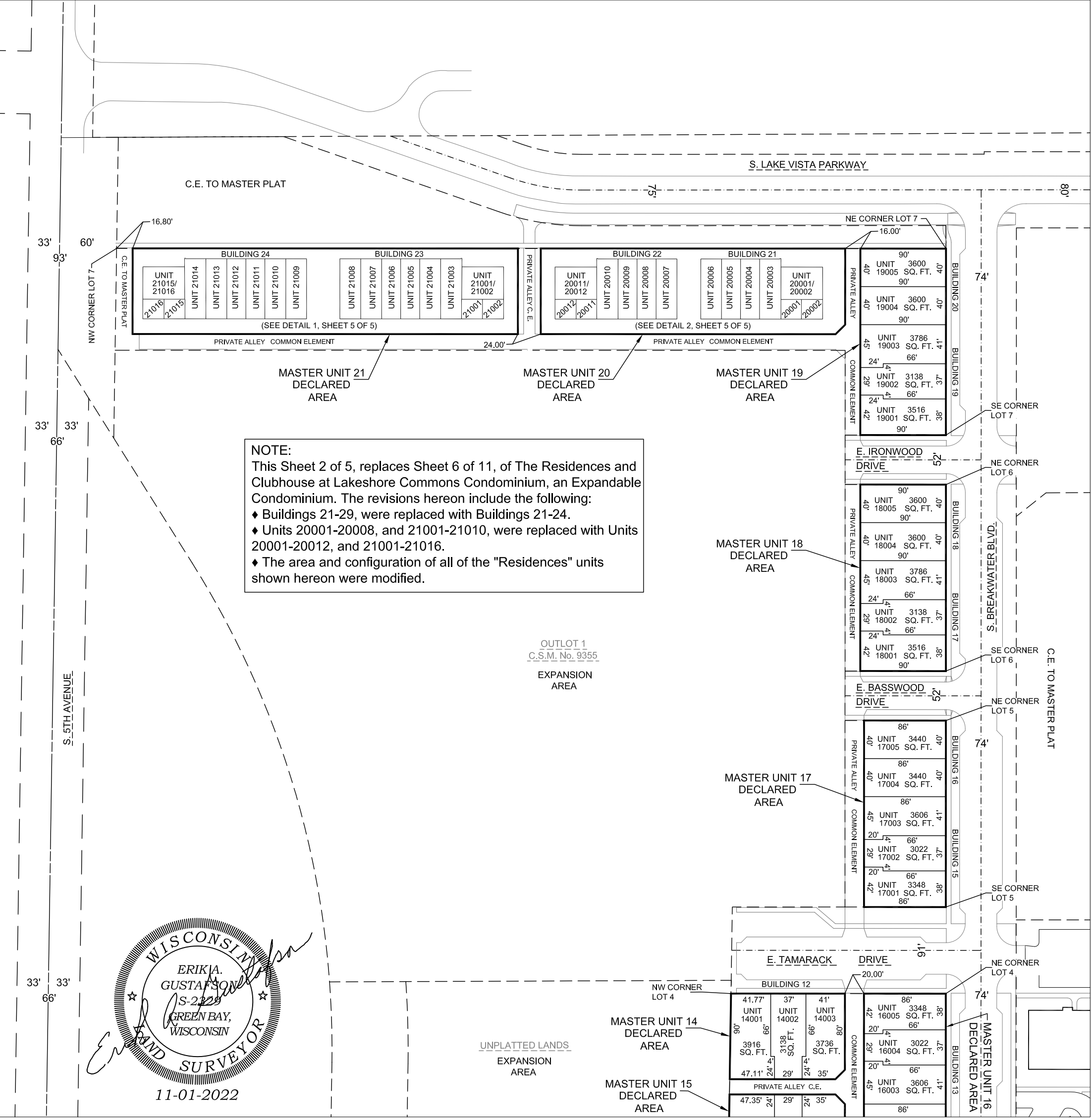
LEGEND:

- C.E. = Common Element  
L.C.E. = Limited Common Element
- = RIGHT-OF-WAY LINE  
- - - = PROPERTY LINE
-  = Wetlands

50 0 50 100  
SCALE IN FEET  
1" = 100'

NORTH REFERENCED TO THE  
WISCONSIN STATE PLANE  
COORDINATE SYSTEM SOUTH ZONE,  
NAD 83, THE WEST LINE OF THE  
FRACTIONAL SW 1/4 OF SECTION  
24-05-22, BEARING N00°52'00"E.  
SCALE: 1"=100'

## CONDOMINIUM UNIT LAYOUTS



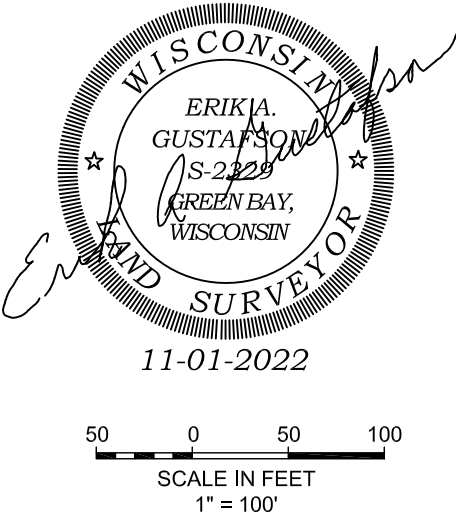
# The Residences and Clubhouse at Lakeshore Commons Condominium, An Expandable Condominium, First Addendum

SHEET 3 OF 5 SHEETS

Units 1-6, and Units 11-21, and the Clubhouse, all being a part of of Lakeshore Commons Master Condominium, an Expandable Condominium, as recorded within the Milwaukee County Registry, and part of Lot 1, and all of Oulot 1, of Certified Survey Map No. 9355, recorded as Document No. 11174987, of the Milwaukee County Registry, and a part of the West 1/2 of the Fractional Southwest 1/4, all being a part of the Fractional Southwest 1/4 of Section 24, Township 5 North, Range 22 East, situated in the City of Oak Creek, Milwaukee County, Wisconsin.

NOTES:

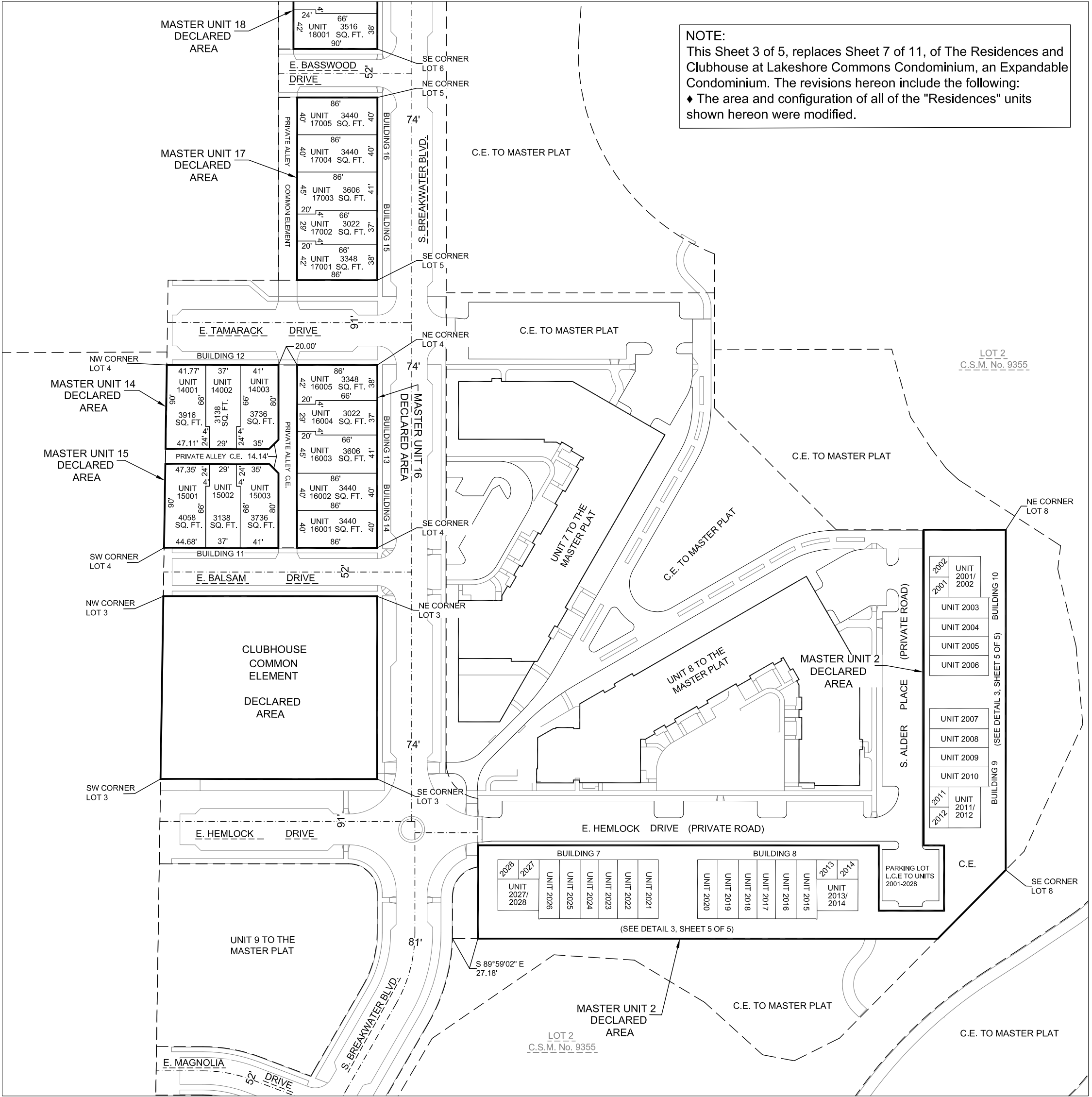
- ♦ All areas within the condominium boundary are Common Element (C.E.) unless depicted as "Unit" or "L.C.E." Private roads and alleys, as shown, are C.E.
- ♦ Limited Common Elements are depicted, to the extent possible, on this plat as "L.C.E."
- ♦ The Common Elements and Limited Common Elements are further defined within the Declaration of Condominium at The Residences and Clubhouse at Lakeshore Commons Condominium, an Expandable Condominium, First Amendment, recorded simultaneously with this plat.
- ♦ That portion of Lot 1, of Certified Survey Map No. 9355, shown as Expansion Area, would need to be sub-divided from said Lot 1, prior to the proposed expansion into said Lot 1.
- ♦ All of the units are building pad boundaries
- ♦ The Clubhouse is the entirety of Lot 3.
- ♦ Field work completed on November 30, 2020.



LEGEND:

- C.E. = Common Element  
L.C.E. = Limited Common Element
- = RIGHT-OF-WAY LINE  
- - - = PROPERTY LINE
- Wetlands
- NORTH REFERENCED TO THE WISCONSIN STATE PLANE COORDINATE SYSTEM SOUTH ZONE, NAD 27. THE WEST LINE OF THE FRACTIONAL SW 1/4 OF SECTION 24-05-22, BEARING N00°52'00"E.
- SCALE: 1"=100'

## CONDOMINIUM UNIT LAYOUTS

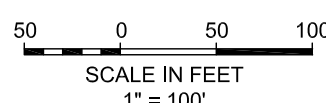


S:\\_SiteDsgn\Rinka Chung Architects\190575 Lake Vista Final\Survey\DWG\190575\_SR\_Residences\_Conco\_2\_Boundary\_Addendum\_1.dwg 11/2/2022 10:48 AM

NOTES:

- 
- The seal is circular with a double-lined border. The outer ring contains the text "WISCONSIN" at the top and "LAND SURVEYOR" at the bottom, separated by two five-pointed stars. The center of the seal contains the text "ERIKA A. GUSTAFSON", "JS-2228", and "GREEN BAY, WISCONSIN". A handwritten signature, "Erika A. Gustafson", is written across the seal, overlapping the text and the border.

11-01-2022



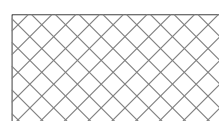
C.E. = Common Element

L.C.E. = Limited Common Element

L.C.E. = Limited Common Element

- = RIGHT-OF-WAY LINE

- = PROPERTY LINE



= Wetlands

NORTH REFERENCED TO THE  
WISCONSIN STATE PLANE  
COORDINATE SYSTEM SOUTH ZONE,  
TAD 27, THE WEST LINE OF THE  
FRACTIONAL SW 1/4 OF SECTION  
24-05-22, BEARING N00°52'00"E.



SCALE: 1"=100'

NOTE: This Sheet 4 of 5, replaces Sheet 8 of 11, of The Residences and Clubhouse at Lakeshore Commons Condominium, an Expandable Condominium. The revisions hereon include the following:  
♦ The area and configuration of all of the "Residences" units shown hereon were modified.

**NOTE:**  
This Sheet 4 of 5, replaces Sheet 8 of 11, of The Residences and Clubhouse at Lakeshore Commons Condominium, an Expandable Condominium. The revisions hereon include the following:

- ◆ The area and configuration of all of the "Residences" units shown hereon were modified.

# The Residences and Clubhouse at Lakeshore Commons Condominium, An Expandable Condominium, First Addendum

SHEET 5 OF 5 SHEETS

Units 1-6, and Units 11-21, and the Clubhouse, all being a part of of Lakeshore Commons Master Condominium, an Expandable Condominium, as recorded within the Milwaukee County Registry, and part of Lot 1, and all of Oulot 1, of Certified Survey Map No. 9355, recorded as Document No. 11174987, of the Milwaukee County Registry, and a part of the West 1/2 of the Fractional Southwest 1/4, all being a part of the Fractional Southwest 1/4 of Section 24, Township 5 North, Range 22 East, situated in the City of Oak Creek, Milwaukee County, Wisconsin.

- NOTES:
- ♦ All areas within the condominium boundary are Common Element (C.E.) unless depicted as "Unit" or "L.C.E." Private roads and alleys, as shown, are C.E.
  - ♦ Limited Common Elements are depicted, to the extent possible, on this plat as "L.C.E."
  - ♦ The Common Elements and Limited Common Elements are further defined within the Declaration of Condominium at The Residences and Clubhouse at Lakeshore Commons Condominium, an Expandable Condominium, First Amendment, recorded simultaneously with this plat.
  - ♦ That portion of Lot 1, of Certified Survey Map No. 9355, shown as Expansion Area, would need to be sub-divided from said Lot 1, prior to the proposed expansion into said Lot 1.
  - ♦ All of the units are building pad boundaries
  - ♦ The Clubhouse is the entirety of Lot 3.
  - ♦ Field work completed on November 30, 2020.



LEGEND:

C.E. = Common Element  
L.C.E. = Limited Common Element

— = RIGHT-OF-WAY LINE  
- - - = PROPERTY LINE

Wetlands

NORTH REFERENCED TO THE WISCONSIN STATE PLANE COORDINATE SYSTEM SOUTH ZONE, NAD 27, THE WEST LINE OF THE FRACTIONAL SW 1/4 OF SECTION 24-05-22, BEARING N00°52'00"E.

## CONDOMINIUM UNIT LAYOUT DETAILS

NOTE:  
This Sheet 5 of 5, includes the following:  
♦ A detail of the revised area, the revised configuration and the revised location of all of the "Residences" units located within Master Units 2, 20, & 21.

