



**SITE INFORMATION**

USDA PLANT HARDINESS ZONE: 5B (-15 to +10 Degrees F)

LOT ZONING: R-3 - Single Family Residential District

LOT AREA: 930,771 SQ. FT. (21.37 Acres)

TOTAL SITE BUILDING AREA: 144,442 SQ. FT.

TOTAL IMPERVIOUS: 309,791 SQ. FT. (7.11 Acres)

TOTAL GREENSPACE: 620,980 SQ. FT. (14.26 Acres)

SITE LANDSCAPE PERCENTAGE: 66.7%

**DESIGN COMPLIANCE:** THIS LANDSCAPE PLAN IS ACCURATE AND IN COMPLIANCE WITH THE CITY OF OAK CREEK LANDSCAPE REQUIREMENTS SET FORTH IN SECTION 17.10.10 LANDSCAPING: (a) PARKING LOT SCREENING, (b) INTERIOR LANDSCAPE AREA, (c) PERIMETER LANDSCAPE AREA, (d) LANDSCAPE ADJACENT TO BUILDINGS, (e) SCREENING OF TRASH

**CONTRACTOR NOTE:** THE LANDSCAPE CONTRACTOR/GENERAL CONTRACTOR ARE RESPONSIBLE TO INSTALL THE LANDSCAPE AS PER THE APPROVED PLAN. IF ANY CHANGES OR DEVIATIONS ARE MADE FROM THE THIS APPROVED PLAN, THE LANDSCAPE CONTRACTOR / GENERAL CONTRACTOR ARE RESPONSIBLE FOR UPDATING THE PLANS ACCORDINGLY AND SUBMITTING THOSE REVISED PLANS FOR APPROVAL AND SIGN OFF WITH THE CITY OF OAK CREEK. THE LANDSCAPE CONTRACTOR / GENERAL CONTRACTOR ARE ALSO RESPONSIBLE FOR VERIFYING THAT ANY PLANT MATERIAL SUBSTITUTIONS OR MODIFICATIONS THAT ARE MADE TO THE APPROVED LANDSCAPE DESIGN DOCUMENTS WILL NOT CHANGE OR ALTER ANY OF THE REQUIRED SUPPORTING LANDSCAPE REQUIREMENT CALCULATIONS. UPON COMPLETION OF THE CONSTRUCTION PROJECT AND FILE THAT AFFIDAVIT WITH THE CITY OF OAK CREEK.

- LANDSCAPE PLAN GENERAL NOTES**
- PLANT MATERIAL SHOWN ON LANDSCAPE PLAN IS DEPICTED AT MATURE GROWTH.
- AT LEAST SEVENTY-TWO HOURS PRIOR TO ANY EXCAVATION, CONTRACTOR SHALL VERIFY UTILITY LOCATIONS AS GIVEN BY THE ELECTRIC, GAS, TELEPHONE, WATER, SEWER, AND CABLE TELEVISION COMPANIES, UTILITIES OR ENTITIES. REVIEW WITH OWNER'S REPRESENTATIVE SITE MECHANICAL, SITE ELECTRICAL AND LIGHTING, SITE GRADING AND DRAINAGE, SITE IRRIGATION AND ALL OTHER DRAWINGS PERTAINING TO UNDERGROUND UTILITY LOCATIONS, RECORD SET OF INFORMATION THE SAME AS IN POSSESSION OF OWNER'S REPRESENTATIVE. ALSO REVIEW OWNER'S "MARK SETS" OF ALL OF THESE DRAWINGS IN POSSESSION OF THE CONTRACTOR OR OWNER. MARK ALL SUCH UTILITIES ON THE SITE PRIOR TO COMMENCING. COORDINATE WITH OWNER BEFORE AND DURING CONSTRUCTION. REPAIR ANY DAMAGE TO ANY SYSTEM THAT IS CAUSED BY LANDSCAPE CONTRACTOR AT NO COST TO OWNER.
  - ALL PLANTINGS SPECIFIED FOR THE STONEBROOK ON THE PARK PROJECT PLANTING TABLES SHALL COMPLY WITH STANDARDS AS DESCRIBED IN AMERICAN STANDARD OF NURSERY STOCK ANSI Z60.1 2014 AND ANSI STANDARDS FOR PLANTING 2012.
  - ALL DEVIATIONS FROM THE APPROVED STONEBROOK ON THE PARK PROJECT PLANS SHALL BE NOTED ON THE RECORD DRAWINGS. BY THE CONTRACTOR AND MAY BE EXECUTED ONLY WITH PRIOR APPROVAL FROM THE LANDSCAPE ARCHITECT AND OWNER'S REPRESENTATIVE. VERBAL AGREEMENTS OR REVISIONS WITHOUT A CHANGE ORDER WILL NOT BE RECOGNIZED BY LANDSCAPE ARCHITECT AND OWNER.
  - ALL PLANTS MUST BE BID AND SELECTED PER THE SPECIES SPECIFIED ON THE PLANS. ANY SPECIES SUBSTITUTIONS MUST BE APPROVED IN WRITING BY LANDSCAPE ARCHITECT. THE SIZES OF PLANT MATERIAL LISTED HEREIN IS A MINIMUM ACCEPTABLE SIZE. ADDITIONALLY, IF EXCESSIVE PRUNING REDUCES THE CROWN THE PLANT SHALL BE REPLACED.
  - PROTECT PUBLIC FROM CONSTRUCTION WITH BARRIERS AND BARRICADES.
  - ALL AREAS THAT WERE DISTURBED DURING CONSTRUCTION AND AREAS NOT COVERED WITH PAVEMENT, BUILDING, PLANTING BEDS, OR TREE PITS ARE TO BE TOPSOILED 3" DEEP (MIN.) AND SHALL BE SODDED/SEEDDED WITH SPECIFIED LAWN GRASS. LANDSCAPE CONTRACTOR SHALL INCLUDE COST PER SQUARE YARD FOR ADDITIONAL SEED OPERATIONS AS MAY BE POSSIBLY REQUIRED TO REESTABLISH ADJACENT TURF GRASS AREAS WHICH MAY BECOME DAMAGED DURING THE CONSTRUCTION PROCESS OR TO REPAIR DAMAGE DONE BY OTHERS.
  - CONTRACTOR IS RESPONSIBLE FOR FURNISHING ALL MATERIALS, TOOLS, EQUIPMENT, LABOR, AND PLANTS NECESSARY FOR PROPER PLANTING AND INSTALLATION OF ALL LANDSCAPE MATERIAL.
  - QUANTITIES ON PLANT MATERIALS LIST ARE FOR CONVENIENCE OF BIDDING ONLY. CONTRACTOR IS RESPONSIBLE FOR ALL PLANTS SHOWN ON LANDSCAPE PLANS AND COVERAGE OF ALL AREAS DELINEATED. THE PLANS ARE TO SUPERSEDE THE PLANT LIST IN ALL CASES.
  - CONTRACTOR IS RESPONSIBLE FOR ALL ESTIMATING AND BIDDING, ALL AREAS, QUANTITIES MATERIALS SHOULD BE FIELD VERIFIED WITH SITE CONDITION.
  - WHERE DISCREPANCIES OCCUR BETWEEN THE LANDSCAPE PLANS AND/OR ARCHITECTURAL AND/OR THE CIVIL DRAWINGS (AND ANY OTHER SITE DRAWINGS) THE DISCREPANCIES MUST BE BROUGHT TO THE LANDSCAPE ARCHITECTS ATTENTION FOR COORDINATION AND RESOLUTION.
  - ALL DISEASED, NOXIOUS OR INAPPROPRIATE MATERIALS SHALL BE REMOVED FROM THE PROPOSED SITE PRIOR TO THE START OF CONSTRUCTION AND DURING THE MAINTENANCE PERIOD.
  - GENERAL CONTRACTOR SHALL LEAVE THE SITE FREE OF CONSTRUCTION DEBRIS.
  - ALL LAWN AND PLANTING AREAS SHALL SLOPE TO DRAIN A MINIMUM OF 2% UNLESS NOTED OTHERWISE AND REVIEWED WITH OWNER'S REPRESENTATIVE FOR FINAL APPROVAL.
  - FINISH GRADES FOR SHRUB AND GROUND COVER AREAS SHALL BE HELD 1" BELOW TOP OF ADJACENT PAVEMENTS AND CURBS, UNLESS NOTED OTHERWISE ON THE PLANS. REFER TO LSP1.9 FOR FURTHER INFORMATION.
  - ALL PERENNIAL, ANNUAL AND GROUND COVER AREAS TO RECEIVE A BLEND OF ORGANIC SOIL AMENDMENTS PRIOR TO PLANTING. TILL THE FOLLOWING MATERIALS INTO EXISTING TOPSOIL TO A DEPTH OF APPROXIMATELY 8" - 12" IN TREE PITS. PROPORTIONATELY BY QUANTITIES MAY REQUIRE ADJUSTMENT DEPENDING ON THE CONDITION OF EXISTING SOIL. REFER TO LSP1.9 FOR FURTHER INFORMATION. **PER EVERY 100 SQUARE FEET ADD:** ONE - 2 CUBIC FOOT BALE OF PEAT MOSS, 2 POUNDS OF 5-10-5 GARDEN FERTILIZER, 1/4 CUBIC YARD OF COMPOSTED MANURE OR OTHER COMPOSTED, ORGANIC MATERIAL.
  - ALL SHRUBS TO BE POCKET PLANTED WITH A 50/50 MIX OF COMPOSTED, ORGANIC MATERIAL AND EXISTING SOIL. INSTALL TOPSOIL INTO ALL BEDS AS NEEDED TO ACHIEVE PROPER GRADE. REMOVE ALL EXCESSIVE GRAVEL, CLAY AND STONES. REFER TO LSP1.9 FOR FURTHER INFORMATION.
  - PLANT ALL TREES SLIGHTLY HIGHER THAN FINISHED GRADE AT ROOT FLARE. BACK FILL HOLE WITH 2/3 EXISTING TOPSOIL AND ORGANIC SOIL AMENDMENTS SPECIFIED IN NOTE 15. AVOID ANY AIR POCKETS. DISCARD ANY GRAVEL CLAY OR STONES. REFER TO LSP1.9 FOR FURTHER INFORMATION.
  - ALL TREES TO BE INSTALLED, STAKED AND GUIED ACCORDING TO DETAILS. REFER TO ANSI STANDARDS FOR PLANTING 2012 AND DETAILS ON LSP1.9 FOR FURTHER INFORMATION.
  - PROVIDE A 4'-0" - 5'-0" DIAMETER MULCH RING AT THE ROOT BALL FLARE OF ALL LAWN TREES.
  - ALL PLANTINGS TO BE WATERED AT THE TIME OF PLANTING, THROUGHOUT CONSTRUCTION AND UPON COMPLETION OF PROJECT AS REQUIRED.
  - WHERE SPECIFIED, ALL PLANT BEDS, PITS AND TREE RINGS ARE TO RECEIVE A MINIMUM OF 2" - 3" DRESSING OF SHREDDED HARDWOOD OAK BARK MULCH SHAVINGS FREE OF GROWTH, WEEDS, FOREIGN MATTER DETRIMENTAL TO PLANT LIFE OR GERMINATION INHIBITING INGREDIENTS. LANDSCAPE CONTRACTOR TO PROVIDE A SAMPLE TO OWNER FOR APPROVAL. CONTRACTOR TO TAKE CARE WITH INSTALLATION NOT TO DAMAGE OR COVER PLANTS. REFER TO LSP1.9 FOR FURTHER INFORMATION.
  - LAWN INSTALLATION: CONTRACTOR TO FURNISH AND PREPARE TOPSOIL (3" MIN) AND SEED BED (REMOVE ALL STONES 1" OR LARGER), APPLY STARTER FERTILIZER AND SEED UNIFORMLY. PROVIDE A MULCH COVERING SUITABLE TO GERMINATE AND ESTABLISH TURF. EROSION CONTROL MESH SHOULD BE USED IN SWALES AND STEEP GRADES WHERE APPLICABLE. METHODS OF INSTALLATION MAY VARY AT THE DISCRETION OF CONTRACTOR. IT IS HIS/HER RESPONSIBILITY TO ESTABLISH AND GUARANTEE A SMOOTH, UNIFORM, QUALITY TURF. IF STRAW MULCH IS USED AS A COVERING, A TACKIFIER MAY BE NECESSARY TO AVOID WIND DAMAGE.
  - DELUXE 50 GRASS SEED MIX REINDER'S (800) 785-3301**  
20% KENTUCKY BLUE GRASS  
15% NEWPORT KENTUCKY BLUE GRASS  
15% SR 2100 Kentucky Bluegrass  
25% Creeping Red Fescue  
15% Replicator Perennial Ryegrass  
10% Fiesta 4 Perennial Ryegrass  
APPLY AT A RATE OF 200 POUNDS PER ACRE, REFER TO SUPPLIERS SPECIFICATIONS & INSTALLATION CUT SHEETS FOR FURTHER FORMATION
  - DURING THE INITIAL "90 DAY MAINTENANCE PERIOD" THE LANDSCAPE CONTRACTOR IS REQUIRED TO PROVIDE AND ON-GOING PLEASANT VISUAL ENVIRONMENT WHEREAS ANY PLANT WHICH IS NOT RESPONDING TO TRANSPLANTING OR THRYING SHALL IMMEDIATELY BE REPLACED. NEW LAWNS SHALL BE WATERED AND REPAIRED AND WEEDS MUST CONSTANTLY BE REMOVED, NO EXCEPTIONS WILL BE GRANTED.  
**MAINTENANCE NOTE:**  
MAINTENANCE IS THE RESPONSIBILITY OF THE PROPERTY OWNER TO MAINTAIN REQUIRED LANDSCAPING IN ACCORDANCE WITH THE MUNICIPALITY'S PROPERTY MAINTENANCE CODE AND AN APPROVED MAINTENANCE PLAN. THE MAINTENANCE MUST INCLUDE, AT A MINIMUM, METHODS FOR PROVIDING THE FOLLOWING:
    - NECESSARY IRRIGATION (IF REQUIRED)
    - INTEGRATED PEST MANAGEMENT,
    - PROPER FERTILIZATION
    - TREE CARE AND PRUNING, SHRUB TIP CLIPPING AND SHAPING AS REQUIRED
    - REPLACEMENT OF LOST VEGETATION, AND ALL DISEASED, DAMAGED, OR DEAD MATERIAL WILL BE REPLACED BY THE END OF THE FOLLOWING PLANTING SEASON IN PERPETUITY.
    - WEED MANAGEMENT AND BED CARE.
  - ALL NEWLY PLANTED TREES AND SHRUBS ARE TO RECEIVE AN APPLICATION OF AN ANTI-TRANSPIRANT SPRAY THAT WILL EFFECTIVELY REDUCE THE WATER LOSS OF TRANSPIRATION OF PLANT MATERIAL AND REDUCE THE STRESS OF TRANSPLANTATION. IT IS RECOMMENDED AS PART OF THE ONGOING MAINTENANCE THAT ANY BROADLEAF EVERGREEN AND CONIFEROUS TREE AND SHRUBS (EXCLUDING ARBORVITAE) RECEIVE AN APPLICATION OF AN ANTI-DESICCANT SPRAY TO REDUCE THE LOSS OF MOISTURE DUE TO WINTER DESICCATION.
  - MAINTENANCE. THE OWNER SHALL TEND AND MAINTAIN ALL PLANT MATERIALS IN A HEALTHY GROWING CONDITION AS PER THE APPROVED PLAN. PLANTINGS SHALL BE REPLACED WHEN NECESSARY AND KEPT FREE FROM REFUSE & DEBRIS. ALL PLANTING MATERIAL WHICH IS DYING OR DAMAGED BEYOND RECOVERY SHALL BE REPLACED WITHIN SIX (6) MONTHS OR BY THE NEXT PLANTING SEASON, WHICHEVER COMES FIRST.
  - LANDSCAPE / SITE DEMOLITION CONTRACTOR TO VERIFY LOCATIONS OF EXISTING TREES AND SHRUBS TO BE SALVAGED AND CLEARLY TAG THEM WITH MARKING TAPE AND CONSTRUCTION FENCE.

TO OBTAIN LOCATION OF PARTICIPANT'S UNDERGROUND FACILITIES BEFORE YOU DIG IN WISCONSIN

**DIGGERS HOT LINE**

WISCONSIN STATUTE 182.0175 (1974) REQUIRES A MINIMUM OF 3 DAYS NOTICE BEFORE YOU EXCAVATE (NOT INCLUDING SATURDAY, SUNDAY OR LEGAL HOLIDAYS)

UNDERGROUND SEWER AND UTILITY INFORMATION AS SHOWN IS OBTAINED FROM THE RECORDS OF MUNICIPALITY AND LOCAL UTILITY COMPANIES. THE ACCURACY OF WHICH CAN NOT BE GUARANTEED OR CERTIFIED. THE LOCATIONS OF EXISTING UTILITY INSTALLATIONS AS SHOWN ON THIS SURVEY ARE APPROXIMATE. THERE MAY BE OTHER UNDERGROUND UTILITY INSTALLATIONS WITHIN THE PROJECT AREA THAT ARE NOT SHOWN.

TO OBTAIN LOCATION OF PARTICIPANT'S UNDERGROUND FACILITIES BEFORE YOU DIG IN WISCONSIN CALL THE MILWAUKEE UTILITY ALERT NETWORK (800) 242-8511, (262) 432-7910 (877) 500-9592 [www.Diggershotline.com](http://www.Diggershotline.com)

**811**  
Know what's below. Call before you dig!

**InSITE**  
LANDSCAPE DESIGN  
Landscape Consulting  
& Master Planning Design Services  
11525 W. North Avenue, Suite 1B  
Wauwatosa, WI 53226  
Tel (414) 476-1204  
[www.insitedesigninc.com](http://www.insitedesigninc.com)  
[mdavis@insitedesigninc.com](mailto:mdavis@insitedesigninc.com)

**Project:**  
**STONEBROOK ON THE PARK**  
641 East Drexel Avenue  
Oak Creek, WI

**Issuance and Revisions:**

Date	Number	Description
10/05/22		Client Review Submittal

COPYRIGHT InSite Landscape Design Inc. 2020  
ALL RIGHTS RESERVED  
THIS DRAWING IS NOT TO BE REPRODUCED, CHANGED, COPIED OR ASSIGNED TO ANY THIRD PARTY IN ANY FORM OR MANNER WITHOUT FIRST OBTAINING THE EXPRESSED WRITTEN PERMISSION OF InSite Landscape Design, Inc. THE CLIENT AGREES TO INDEMNIFY AND HOLD THE InSite Landscape Design Inc. HARMLESS FROM ANY DAMAGES, LIABILITY OR COST, INCLUDING ATTORNEY'S FEES AND COSTS OF DEFENSE ARISING FROM ANY CHANGES OR ALTERATIONS MADE BY ANYONE OTHER THAN THE InSite Landscape Design Inc. OR FROM ANY REUSE OF THE DRAWINGS OR DATA WITHOUT THE PRIOR WRITTEN CONSENT OF THE InSite Landscape Design Inc.

**Sheet Title:**  
**PROPOSED OVERALL LANDSCAPE PLAN, AND GENERAL NOTES**

Date of Drawing: 10/05/22  
Scale: 1" = 60'-0"  
Drawn By: MCD  
Job Number: L22-050  
Sheet Number:

**LSP1.1**





Project:

# STONEBROOK ON THE PARK










641 East Drexel Avenue  
Oak Creek, WI



**Issuance and Revisions:**


Date	Number	Description
10/05/22		Client Review Submittal



1 PROPOSED PARTIAL LANDSCAPE PLAN - NORTH


Proposed Plant Material Table - LSP1.2

Broadleaf Deciduous Tree							
Quantity	Code Name	Symbol	Scientific Name	Common Name	Planting Size	Mature Size	Comments
1	BenH		<i>Betula Nigra</i> "Heritage"	Heritage River Birch	8' - 10' - Clump B&B	50' x 40'	2
1	CeoC-PP		<i>Celtis occidentalis</i> "Prairie Pride"	Prairie Pride Hackberry	2 1/2"-Cal - B&B	50' x 40'	1
1	Ceja		<i>Cercidiphyllum japonicum</i>	Katsura Tree	2 1/2"-Cal - B&B	50' x 40'	1
4	GloPS		<i>Ginkgo biloba</i> "Princeton Sentry"	Princeton Sentry Maidenhair Tree	2 1/2"-Cal - B&B	45' x 25'	1, 7
1	GlrS		<i>Gleditsia triacanthos</i> "Sunburst"	Sunburst Honey Locust	2 1/2"-Cal - B&B	40' x 20'	1
1	LifuA		<i>Liliodendron tulipifera</i> "Aureomarginatum"	Majestic Beauty Tulip Tree	2 1/2"-Cal - B&B	70' x 40'	1
1	NysyW		<i>Nyssa sylvatica</i> "Wildfire"	Wildfire Black Gum	2"-Cal - B&B	40' x 25'	1
1	Qubi		<i>Quercus bicolor</i>	Swamp White Oak	2 1/2"-Cal - B&B	60' x 60'	1
1	UlamNH		<i>Ulmus americana</i> "New Harmony"	Swamp White Elm	2 1/2"-Cal - B&B	70' x 60'	1

Quantity	Code Name	Symbol	Scientific Name	Common Name	Planting Size	Mature Size	Comments
4	PhopM		<i>Rosocarpus apulifolius</i> 'Monlo'	Diablo Ninebark	2' - 3' - B&B	8' x 8'	5
7	RoM		<i>Rosa 'Meimroli'</i>	Apricot Drift Groundcover Rose	18" - Cont	1.5 x 2.5'	5

Conifer Evergreen Shrub							
Quantity	Code Name	Symbol	Scientific Name	Common Name	Planting Size	Mature Size	Comments
6	JupfSG		Juniperus x pfitzeriana 'MonSas'	Sea of Gold Juniper	18" - 24" - B&B	3' x 4'	5



Perennial Grass							
Quantity	Code Name	Symbol	Scientific Name	Common Name	Planting Size	Mature Size	Comments
11	HeseS		Helictotrichon sempervirens 'Saphirsprudel'	Sapphire Fountain Blue Oat Grass	2-Gal - Cont	3' x 2'	6
	MisP		Miscanthus sinensis 'Purpureus'	Purple Silver Grass	1-Gal - Cont	5' x 3'	6

Quantity	Code Name	Symbol	Scientific Name	Common Name	Planting Size	Mature Size	Comments
19	HeNo		Hemerocallis x 'Nosteratu'	Trophytaker Nosteratu Daylily	4 1/2" pot	2' x 2'	6

## Comments

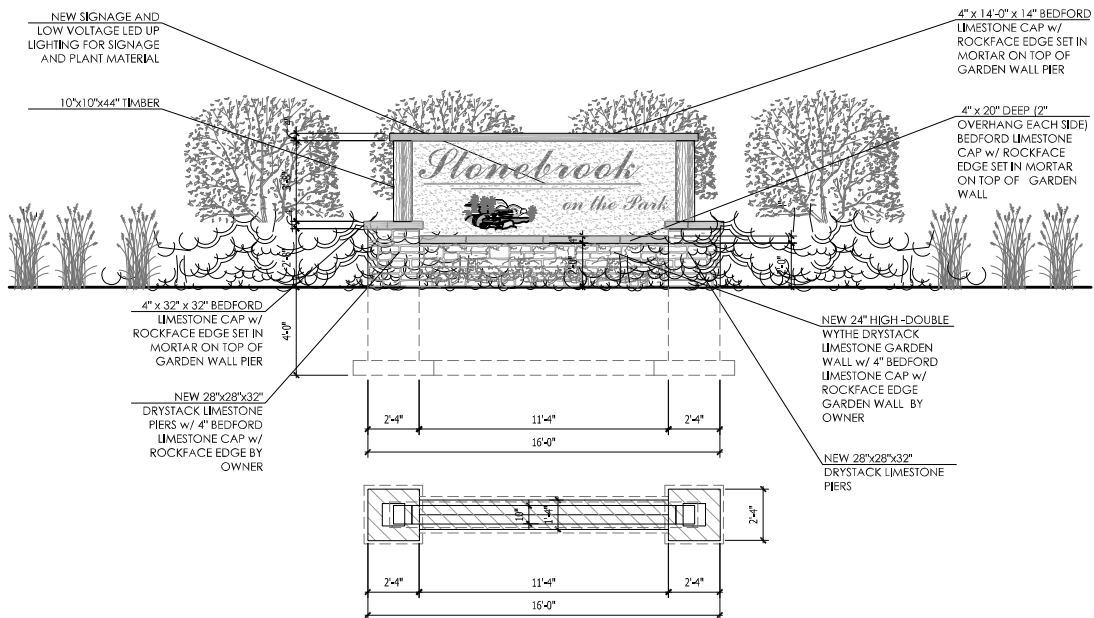
1. Straight central leader, full & even crown. Prune only after planting.
2. Well balanced, multi-stemmed tree with a minimum of (3) strong canes and full appearance.
3. Remove tree in its entirety and grind stump to a minimum of 6" below adjacent grade. Remove grinding chips and fill hole with topsoil and sow turf grass seed as required.
4. Evenly shaped upright tree with full branching to the ground.
5. Full, well rooted plant, evenly shaped.
6. Full, well rooted plant.
7. Male only

### Low Voltage Lighting Schedule

Quantity	Code Name	Symbol	
4	LC-Z9-LED-BZ		FX-Luminaire LC-Z9 LED Wall Wash Light on an 18" pipe and Super-Alloy & Bronze Finish. Refer to cut sheets for further information and installation instructions.
1	Transformer		FX-Luminaire Luxor 300 watt transformer w/ Stainless Steel Locking Case. Refer to cut sheets for further information and installation instructions, to be mounted to back side of the monument sign at the base.

Low Voltage Lighting Installer's note:

1. All fixtures are to receive between 10.8 and 11.5 volts;
2. Installation of fixtures and associated equipment are to conform to nec and ul 1838.
3. General contractor with lighting installer all locations for transformers and power locations and requirements.
4. Pipe sleeves are to be 2" water tight schedule 40 pipe.
5. Concrete contractor and asphalt contractor to coordinate with lighting installer regarding the installation of pipe sleeves, cable and electrical boxes being placed in concrete forms. pipe sleeves are to be placed in granular base course ends are to be sealed shut and covered with caps.
6. Locations of pipe sleeves underneath paved surfaces, general contractor to coordinate with paving contractors and lighting contractor.



COPYRIGHT InSite Landscape Design Inc. 2020  
ALL RIGHTS RESERVED  
THIS DRAWING IS NOT TO BE REPRODUCED,  
CHANGED, COPIED OR ASSIGNED TO ANY THIRD  
PARTY IN ANY FORM OR MANNER WITHOUT FIRST  
OBTAINING THE EXPRESSED WRITTEN PERMISSION  
OF InSite Landscape Design, Inc. THE CLIENT AGREES  
TO INDEMNIFY AND HOLD THE InSite Landscape  
Design Inc. HARMLESS FROM ANY DAMAGES,  
LIABILITY, OR COST, INCLUDING ATTORNEYS FEES  
AND COSTS OF DEFENSE ARISING FROM ANY  
CHANGES OR ALTERATIONS MADE BY ANYONE  
OTHER THAN THE InSite Landscape Design Inc., OR  
FROM ANY REUSE OF THE DRAWINGS OR DATA  
WITHOUT THE PRIOR WRITTEN CONSENT OF THE  
InSite Landscape Design Inc.

**Sheet Title:**

## PROPOSED PARTIAL LANDSCAPE PLAN - NORTH AND PLANT MATERIAL TABLE

Date of Drawing: 10/15/1994

Scale: 1" = 20' 0"

Drawn By: MCD

Job Number: 122-050

Sheet Number

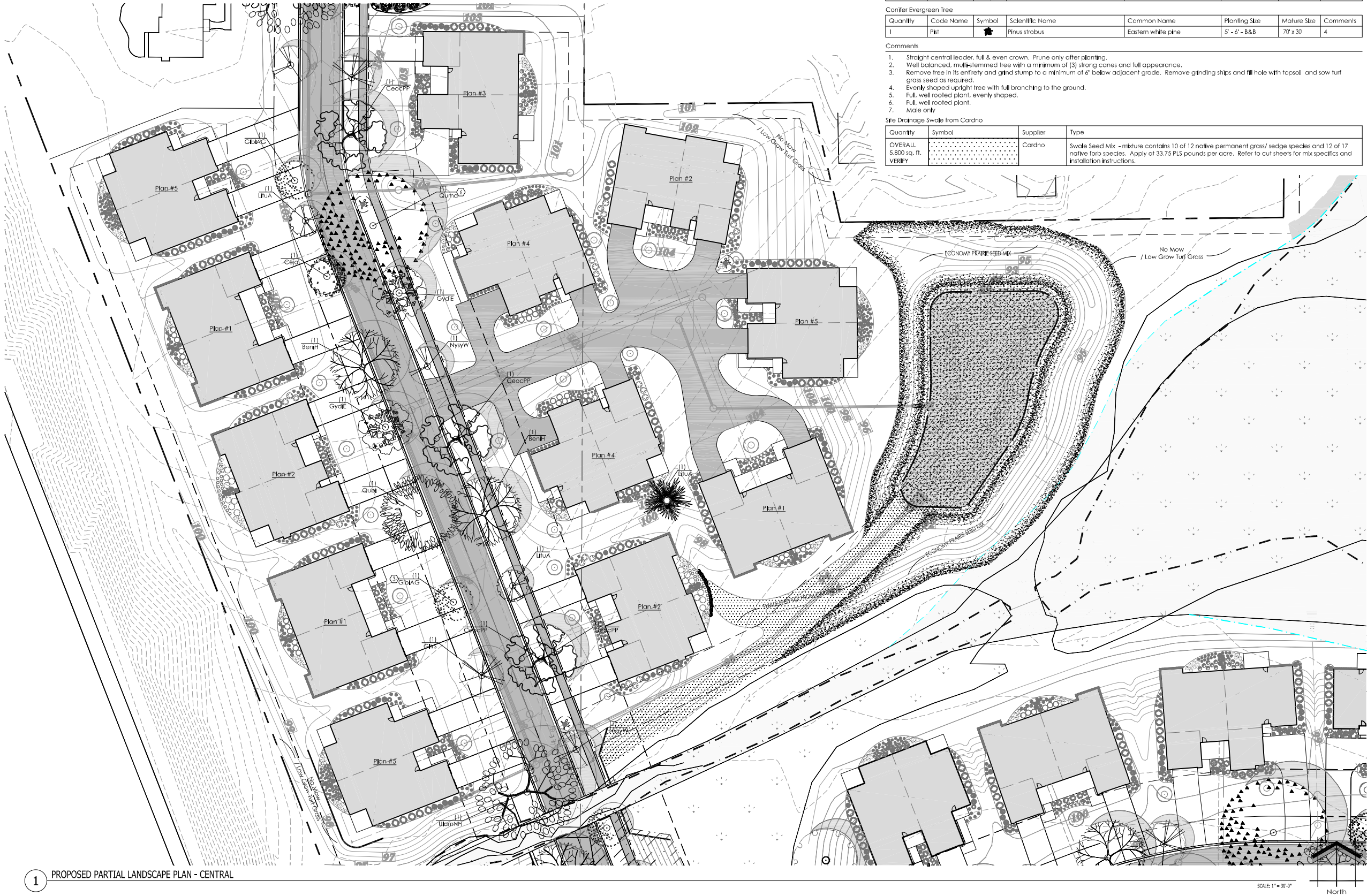
# LSP1.2

2 PROPOSED MONUMENT SIGN ELEVATION / PLAN

SCALE: 1/4" = 1'-0"

**NOT FOR CONSTRUCTION - PRELIMINARY - FOR ESTIMATING AND REVIEW ONLY- DO NOT SCALE THESE DRAWINGS-**  
These progress documents reflect progress & intent & may be subject to change, including additional notes and detail. These are not final construction documents and should not be used for final bidding or construction-related purposes.

L22-050 - STONEBROOK ON THE PARK - 10/05/2022



Upper Third of the Bowl - Economy Prairie Seed Mix Storm Water Management Pond area from Cardno

Quantity	Symbol	Supplier	Type
OVERALL 18,300 sq. ft. VERIFY		Cardno	Economy Prairie Seed Mix - mixture contains 6 of 7 native permanent grass/ sedge species and 10 of 13 native forb species. Apply at 40.95 PLS pounds per acre. Refer to cut sheets for mix specifics and installation instructions.

Lower Two-Thirds of the Bowl - Stormwater Prairie Seed Mix @ Storm Water Management Pond area from Cardno

Quantity	Symbol	Supplier	Type
10,300 sq. ft. VERIFY		Cardno	Stormwater Prairie Seed Mix - mixture contains 10 of 12 native permanent grass/ sedge species and 12 of 16 native forb species. Refer to cut sheets for mix specifics and installation instructions.

Proposed Plant Material Table - LSP1.3

Broadleaf Deciduous Tree

Quantity	Code Name	Symbol	Scientific Name	Common Name	Planting Size	Mature Size	Comments
2	BenH		Betula nigra "Heritage"	Heritage River Birch	8' - 10' - Clump B&B	50' x 40'	2
3	CeocPP		Celtis occidentalis "Prairie Pride"	Prairie Pride Hackberry	2 1/2" - Cal - B&B	50' x 40'	1
1	Ceja		Cercidiphyllum japonicum	Katsura Tree	2 1/2" - Cal - B&B	50' x 40'	1
2	GibaG		Ginkgo biloba "Autumn Gold"	Autumn Gold Maidenhair Tree	2 1/2" - Cal - B&B	40' x 30'	1, 7
1	GltH		Gleditsia triacanthos "Sunburst"	Sunburst Honey Locust	2 1/2" - Cal - B&B	40' x 20'	1
2	GycE		Gymnocladus dioica "Espresso"	Espresso Kentucky Coffee Tree	2 1/2" - Cal - B&B	40' x 35'	1, 7
2	LtUA		Liriodendron tulipifera "Aureomarginatum"	Majestic Beauty Tulip Tree	2 1/2" - Cal - B&B	70' x 40'	1
2	NysyW		Nyssa sylvatica "Wildfire"	Wildfire Black Gum	2" - Cal - B&B	40' x 25'	1
1	Qubi		Quercus bicolor	Swamp White Oak	2 1/2" - Cal - B&B	60' x 60'	1
1	Quma		Quercus macrocarpa	Bur oak	2 1/2" - Cal - B&B	70' x 70'	1
1	UlamNH		Ulmus americana "New Harmony"	New Harmony Elm	2 1/2" - Cal - B&B	70' x 60'	1

Conifer Evergreen Tree

Quantity	Code Name	Symbol	Scientific Name	Common Name	Planting Size	Mature Size	Comments
1	Pst		Pinus strobus	Eastern white pine	5' - 6' - B&B	70' x 30'	4

Comments

1. Straight central leader, full & even crown. Prune only after planting.
2. Well balanced, multi-stemmed tree with a minimum of (3) strong canes and full appearance.
3. Remove tree in its entirety and grind stump to a minimum of 6" below adjacent grade. Remove grinding chips and fill hole with topsoil and sow turf grass seed as required.
4. Evenly shaped upright tree with full branching to the ground.
5. Full, well rooted plant, evenly shaped.
6. Full, well rooted plant.
7. Male only

Site Drainage Swale from Cardno

Quantity	Symbol	Supplier	Type
OVERALL 5,800 sq. ft. VERIFY		Cardno	Swale Seed Mix - mixture contains 10 of 12 native permanent grass/ sedge species and 12 of 17 native forb species. Apply at 33.75 PLS pounds per acre. Refer to cut sheets for mix specifics and installation instructions.

INSITE

LANDSCAPE DESIGN

Landscape Consulting  
& Master Planning Design Services

11525 W. North Avenue, Suite 1B  
Wauwatosa, WI 53226  
Tel (414) 476-1204  
www.insitedesigninc.com  
mdavis@insitedesigninc.com

Project:

STONEBROOK ON THE PARK

641 East Drexel Avenue  
Oak Creek, WI

Issuance and Revisions:

Date	Number	Description
10/05/22		Client Review Submittal

COPYRIGHT InSite Landscape Design Inc. 2020  
ALL RIGHTS RESERVED  
THIS DRAWING IS NOT TO BE REPRODUCED, CHANGED, COPIED OR ASSIGNED TO ANY THIRD PARTY IN ANY FORM OR MANNER WITHOUT FIRST OBTAINING THE EXPRESSED WRITTEN PERMISSION OF InSite Landscape Design, Inc. THE CLIENT AGREES TO INDEMNIFY AND HOLD THE InSite Landscape Design Inc. HARMLESS FROM ANY DAMAGES, LIABILITY OR COST, INCLUDING ATTORNEY'S FEES AND COSTS OF DEFENSE ARISING FROM ANY CHANGES OR ALTERATIONS MADE BY ANYONE OTHER THAN THE InSite Landscape Design Inc. OR FROM ANY REUSE OF THE DRAWINGS OR DATA WITHOUT THE PRIOR WRITTEN CONSENT OF THE InSite Landscape Design Inc.

Sheet Title:

PROPOSED PARTIAL  
LANDSCAPE PLAN - NORTH  
AND PLANT MATERIAL TABLE

Date of Drawing:	10/05/22
Scale:	1" = 20'-0"
Drawn By:	MCD
Job Number:	L22-050
Sheet Number:	

LSP1.3



Project:

**STONEBROOK ON  
THE PARK**

641 East Drexel Avenue  
Oak Creek, WI

Issuance and Revisions:

Date	Number	Description
10/05/22		Client Review Submittal

COPYRIGHT InSite Landscape Design Inc. 2020  
ALL RIGHTS RESERVED  
THIS DRAWING IS NOT TO BE REPRODUCED,  
CHANGED, COPIED OR ASSIGNED TO ANY THIRD  
PARTY IN ANY FORM OR MANNER WITHOUT FIRST  
OBTAINING THE EXPRESSED WRITTEN PERMISSION  
OF InSite Landscape Design, Inc. THE CLIENT AGREES  
TO INDEMNIFY AND HOLD THE InSite Landscape  
Design Inc. HARMLESS FROM ANY DAMAGES,  
LIABILITY, OR COST, INCLUDING ATTORNEYS FEES  
AND COSTS OF DEFENSE ARISING FROM ANY  
CHANGES OR ALTERATIONS MADE BY ANYONE  
OTHER THAN THE InSite Landscape Design Inc., OR  
FROM ANY REUSE OF THE DRAWINGS OR DATA  
WITHOUT THE PRIOR WRITTEN CONSENT OF THE  
InSite Landscape Design Inc.

Sheet Title:

PROPOSED PARTIAL  
LANDSCAPE PLAN - SOUTH CENTRAL  
AND PLANT MATERIAL TABLE

Date of Drawing: 10/05/22  
Scale: 1" = 30'-0"  
Drawn By: MCD  
Job Number: L22-050  
Sheet Number:

**LSP1.4**

**NOT FOR CONSTRUCTION - PRELIMINARY - FOR ESTIMATING AND REVIEW ONLY- DO NOT SCALE THESE DRAWINGS-**  
These progress documents reflect progress & intent & may be subject to change, including additional notes and detail. These are not final construction documents and should not be used for final bidding or construction-related purposes.



**1 PROPOSED PARTIAL LANDSCAPE PLAN - SOUTH CENTRAL**

Proposed Plant Material Table - LSP1.4

Broadleaf Deciduous Tree

Quantity	Code Name	Symbol	Scientific Name	Common Name	Planting Size	Mature Size	Comments
1	AcSaGM		Acer Saccharum 'Green Mountain'	Green Mountain Sugar Maple	2 1/2"-Cal - B&B	60' x 50'	1
3	BeNiH		Betula Nigra 'Heritage'	Heritage River Birch	8" - 10" - Clump B&B	50' x 40'	2
2	CeOcPP		Celtis occidentalis 'Prairie Pride'	Prairie Pride Hackberry	2 1/2"-Cal - B&B	50' x 40'	1
1	CeJa		Cercidiphyllum japonicum	Katsura Tree	2 1/2"-Cal - B&B	50' x 40'	1
4	GiBiAG		Ginkgo biloba 'Autumn Gold'	Autumn Gold Maidenhair Tree	2 1/2"-Cal - B&B	45' x 30'	1, 7
4	GiBiPS		Ginkgo biloba 'Princeton Sentry'	Princeton Sentry Maidenhair Tree	2 1/2"-Cal - B&B	45' x 25'	1, 7
3	GtriS		Gleditsia triacanthos 'Sunburst'	Sunburst Honey Locust	2 1/2"-Cal - B&B	40' x 20'	1
2	GyDiE		Gymnocladus dioica 'Espresso'	Espresso Kentucky Coffee Tree	2 1/2"-Cal - B&B	40' x 35'	1, 7
2	LiTuA		Liriodendron tulipifera 'Aureomarginatum'	Majestic Beauty Tulip Tree	2 1/2"-Cal - B&B	70' x 40'	1
1	NySyW		Nyssa sylvatica 'Waldire'	Waldire Black Gum	2"-Cal - B&B	40' x 25'	1
2	QuBi		Quercus bicolor	Swamp White Oak	2 1/2"-Cal - B&B	60' x 60'	1
3	QuMa		Quercus macrocarpa	Bur oak	2 1/2"-Cal - B&B	70' x 70'	1
2	UlaMNH		Ulmus americana 'New Harmony'	New Harmony Elm	2 1/2"-Cal - B&B	70' x 60'	1

Comments

- Straight central leader, full & even crown. Prune only after planting.
- Well balanced, multi-stemmed tree with a minimum of (3) strong canes and full appearance.
- Remove tree in its entirety and grind stump to a minimum of 6" below adjacent grade. Remove grinding chips and fill hole with topsoil and sow turf grass seed as required.
- Evenly shaped upright tree with full branching to the ground.
- Full, well rooted plant, evenly shaped.
- Full, well rooted plant.
- Male only

Site Drainage Swale from Cardno

Quantity	Symbol	Supplier	Type
OVERALL 7,600 sq. ft. VERIFY		Cardno	Swale Seed Mix - mixture contains 10 of 12 native permanent grass/ sedge species and 12 of 17 native forb species. Apply at 33.75 PLS pounds per acre. Refer to cut sheets for mix specifics and installation instructions.

Upper Third of the Bowl - Economy Prairie Seed Mix Storm Water Management Pond area from Cardno

Quantity	Symbol	Supplier	Type
OVERALL 12,600 sq. ft. VERIFY		Cardno	Economy Prairie Seed Mix - mixture contains 6 of 7 native permanent grass/ sedge species and 10 of 13 native forb species. Apply at 40.95 PLS pounds per acre. Refer to cut sheets for mix specifics and installation instructions.

Lower Two-Thirds of the Bowl - Stormwater Prairie Seed Mix @ Storm Water Management Pond area from Cardno

Quantity	Symbol	Supplier	Type
15,200 sq. ft. VERIFY		Cardno	Stormwater Prairie Seed Mix - mixture contains 10 of 12 native permanent grass/ sedge species and 12 of 16 native forb species. Refer to cut sheets for mix specifics and installation instructions.



Project:

STONEBROOK ON  
THE PARK

641 East Drexel Avenue  
Oak Creek, WI

Issuance and Revisions:

Date	Number	Description
10/05/22		Client Review Submittal

COPYRIGHT InSite Landscape Design Inc. 2020  
ALL RIGHTS RESERVED  
THIS DRAWING IS NOT TO BE REPRODUCED,  
CHANGED, COPIED OR ASSIGNED TO ANY THIRD  
PARTY IN ANY FORM OR MANNER WITHOUT FIRST  
OBTAINING THE EXPRESSED WRITTEN PERMISSION  
OF InSite Landscape Design, Inc. THE CLIENT AGREES  
TO INDEMNIFY AND HOLD THE InSite Landscape  
Design Inc. HARMLESS FROM ANY DAMAGES,  
LIABILITY, OR COST, INCLUDING ATTORNEYS FEES  
AND COSTS OF DEFENSE ARISING FROM ANY  
CHANGES OR ALTERATIONS MADE BY ANYONE  
OTHER THAN THE InSite Landscape Design Inc., OR  
FROM ANY REUSE OF THE DRAWINGS OR DATA  
WITHOUT THE PRIOR WRITTEN CONSENT OF THE  
InSite Landscape Design Inc.

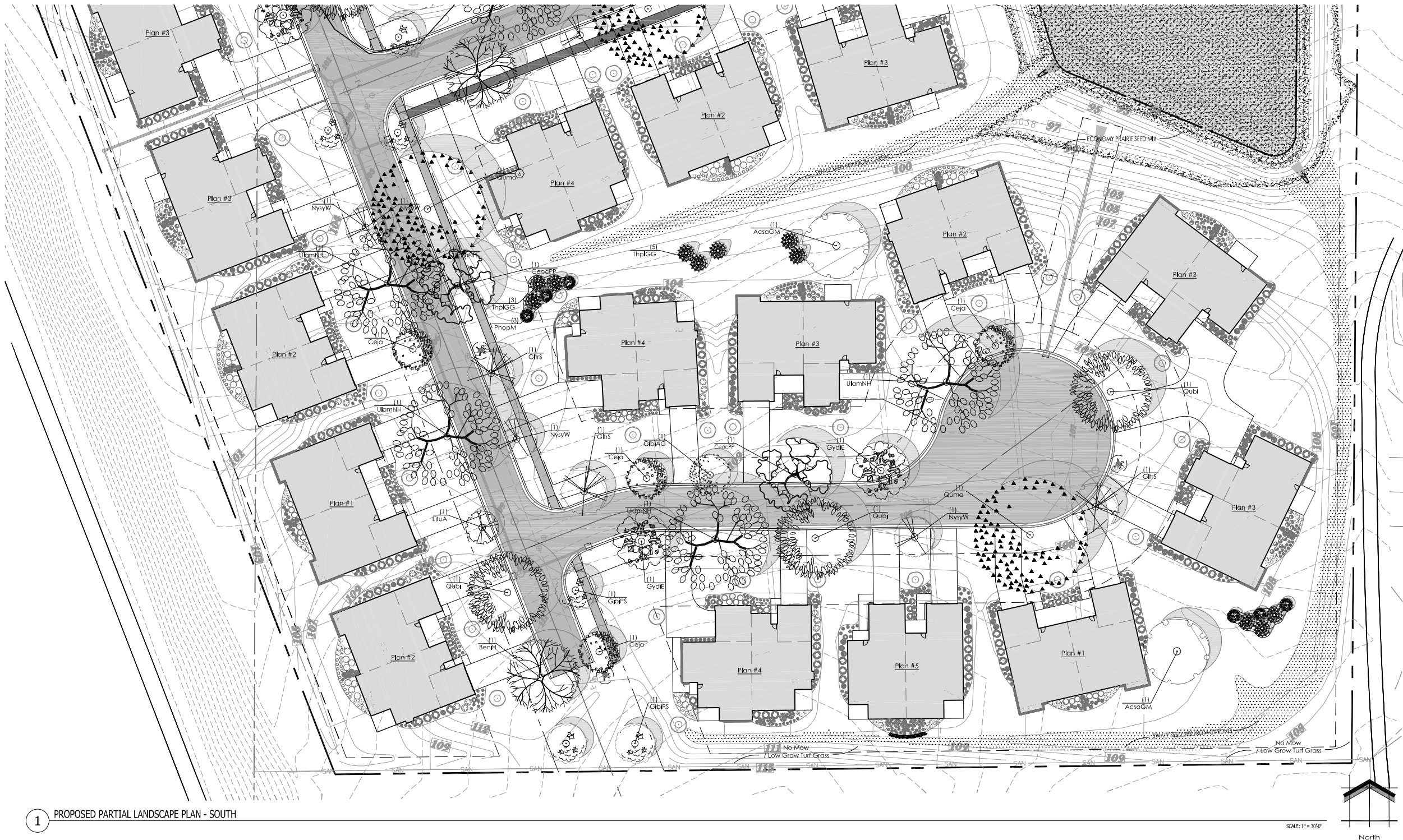
Sheet Title:

PROPOSED PARTIAL  
LANDSCAPE PLAN - SOUTH  
AND PLANT MATERIAL TABLE

Date of Drawing: 10/05/22  
Scale: 1" = 30'-0"  
Drawn By: MCD  
Job Number: L22-050  
Sheet Number:

LSP1.5

NOT FOR CONSTRUCTION - PRELIMINARY - FOR ESTIMATING AND REVIEW ONLY- DO NOT SCALE THESE DRAWINGS-  
These progress documents reflect progress & intent & may be subject to change, including additional notes and detail. These are not final construction documents and should not be used for final bidding or construction-related purposes.



1 PROPOSED PARTIAL LANDSCAPE PLAN - SOUTH

Proposed Plant Material Table - LSP1.5

Quantity	Code Name	Symbol	Scientific Name	Common Name	Planting Size	Mature Size	Comments
2	AcsaGM		Acer saccharum 'Green Mountain'	Green Mountain Sugar Maple	2 1/2"-Cal - B&B	60' x 50'	1
1	BenH		Betula nigra 'Heritage'	Heritage River Birch	8' - 10' - Clump B&B	50' x 40'	2
2	CeacPP		Celtis occidentalis 'Patrie Pride'	Patrie Pride Hackberry	2 1/2"-Cal - B&B	50' x 40'	1
4	Ceja		Cercidiphyllum japonicum	Katsura Tree	2 1/2"-Cal - B&B	50' x 40'	1
1	GibiAG		Ginkgo biloba 'Autumn Gold'	Autumn Gold Maidenhair Tree	2 1/2"-Cal - B&B	45' x 30'	1, 7
3	GibiPS		Ginkgo biloba 'Princeton Sentry'	Princeton Sentry Maidenhair Tree	2 1/2"-Cal - B&B	45' x 25'	1, 7
3	Glrs		Gleditsia triacanthos 'Sunburst'	Sunburst Honey Locust	2 1/2"-Cal - B&B	40' x 20'	1
2	GydIE		Gymnocladus dioica 'Espresso'	Espresso Kentucky Coffee Tree	2 1/2"-Cal - B&B	40' x 35'	1, 7
1	LifuA		Liriodendron tulipifera 'Aureomarginatum'	Majestic Beauty Tulip Tree	2 1/2"-Cal - B&B	70' x 40'	1
3	NysyW		Nyssa sylvatica 'Wildfire'	Wildfire Black Gum	2"-Cal - B&B	40' x 25'	1
3	Qubi		Quercus bicolor	Swamp White Oak	2 1/2"-Cal - B&B	60' x 60'	1
2	Quma		Quercus macrocarpa	Bur oak	2 1/2"-Cal - B&B	70' x 70'	1
4	UlamNH		Ulmus americana 'New Harmony'	New Harmony Elm	2 1/2"-Cal - B&B	70' x 60'	1

Quantity	Code Name	Symbol	Scientific Name	Common Name	Planting Size	Mature Size	Comments
11	ThpIGG		Thuja plicata 'Green Giant'	Green Giant Arborvitae	5' - 6' - B&B	30' x 12'	4

Quantity	Code Name	Symbol	Scientific Name	Common Name	Planting Size	Mature Size	Comments
4	PhopM		Physocarpus opulifolius 'Mondo'	Diablo Ninebark	2' - 3' - B&B	8' x 8'	5

Comments

1. Straight central leader, full & even crown. Prune only after planting.
2. Well balanced, multi-stemmed tree with a minimum of (3) strong canes and full appearance.
3. Remove tree in its entirety and grind stump to a minimum of 6" below adjacent grade. Remove grinding chips and fill hole with topsoil and sow turf grass seed as required.
4. Evenly shaped upright tree with full branching to the ground.
5. Full, well rooted plant, evenly shaped.
6. Full, well rooted plant.
7. Male only.

Site Drainage Swale from Cardno

Quantity	Symbol	Supplier	Type
OVERALL 8,800 sq. ft. VERIFY		Cardno	Swale Seed Mix - mixture contains 10 of 12 native permanent grass/ sedge species and 12 of 17 native forb species. Apply at 33.75 PLS pounds per acre. Refer to cut sheets for mix specifics and installation instructions.



Project:

STONEBROOK ON  
THE PARK

641 East Drexel Avenue  
Oak Creek, WI

Issuance and Revisions:

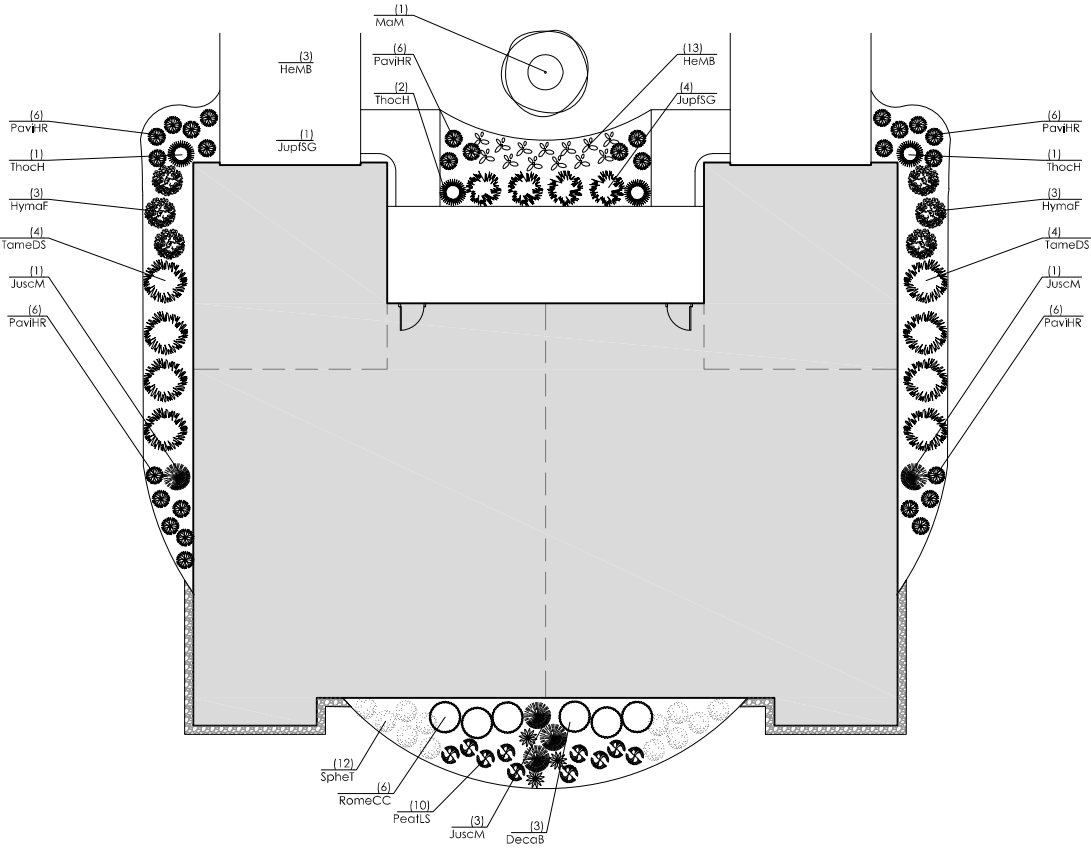
Date	Number	Description
10/05/22		Client Review Submittal

Sheet Title:

PROPOSED FOUNDATION  
LANDSCAPE PLANS FOR  
BUILDINGS #1 & #2  
AND PLANT MATERIAL TABLES

Date of Drawing:	10/05/22
Scale:	1" = 10'-0"
Drawn By:	MCD
Job Number:	L22-050
Sheet Number:	

LSP1.6

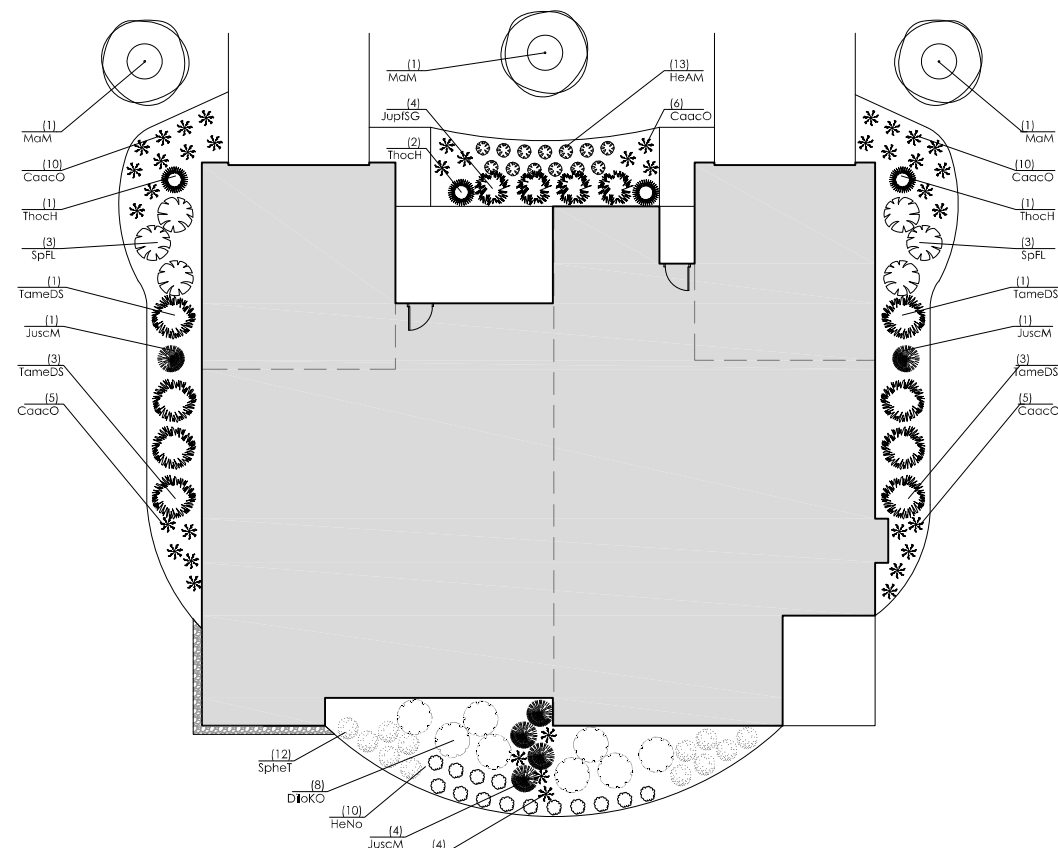


1 PROPOSED CONDOMINIM FOUNDATION LANDSCAPE PLAN - #1

SCALE: 1" = 10'-0"

Proposed Plant Material Table - Plan #1

Broadleaf Deciduous						
Quantity	Code Name	Symbol	Scientific Name	Common Name	Planting Size	Mature Size
1	MaM	○	Malus 'Marilee'	Marilee Flowering Crab	1 1/2" Cal - B&B	20' x 10'
Broadleaf Deciduous Shrub						
Quantity	Code Name	Symbol	Scientific Name	Common Name	Planting Size	Mature Size
6	HymaF	●	Hydrangea macrophylla 'Fantasy'	Next Generation Wedding Ring Hydrangea	18" - Cont	3' x 4'
6	RomeCC	○	Rosa 'Melrose'	Candy Cane Cocktail Rose	18" - Cont	3' x 4'
Conifer Evergreen Shrub						
Quantity	Code Name	Symbol	Scientific Name	Common Name	Planting Size	Mature Size
5	JuscM	●	Juniperus scopulorum 'Medora'	Medora Juniper	4" - B&B	20' x 10'
4	JupISG	●	Juniperus x pfitzeriana 'MonSant'	Sea of Gold Juniper	18" - 24" - B&B	3' x 4'
8	TameDS	●	Taxus x media 'Densformis Select'	Select Dense Spreading Yew	18" - 24" - B&B	4' x 6'
4	ThocH	●	Thuja occidentalis 'Holmstrup'	Holmstrup Dwarf Arborvitae	3' - Cont	5' x 3'
Perennial Grass						
Quantity	Code Name	Symbol	Scientific Name	Common Name	Planting Size	Mature Size
3	DecaB	●	Deschampsia caespitosa Branzschleier	Bronze Veil Tuft Hair Grass	1-Gal - Cont	3' x 2'
28	PavHR	●	Panicum virgatum 'Hot Rod'	Hot Rod Switch Grass	1-Gal - Cont	3' x 2'
12	SpheT	●	Sporobolus heterolepis 'Tara'	Tara Prairie Dropseed	1-Gal - Cont	2.5' x 2.5'
Perennial						
Quantity	Code Name	Symbol	Scientific Name	Common Name	Planting Size	Mature Size
13	HeMB	●	Heuchera x 'Midnight Bayou'	Midnight Bayou Coral Bells	4 1/2" pot	2' x 2'
10	PeatLS	●	Perovskia atriplicifolia 'Little Spire'	Little Spire Russian Sage	4 1/2" pot	2' x 2'



2 PROPOSED CONDOMINIM FOUNDATION LANDSCAPE PLAN - #2

SCALE: 1" = 10'-0"

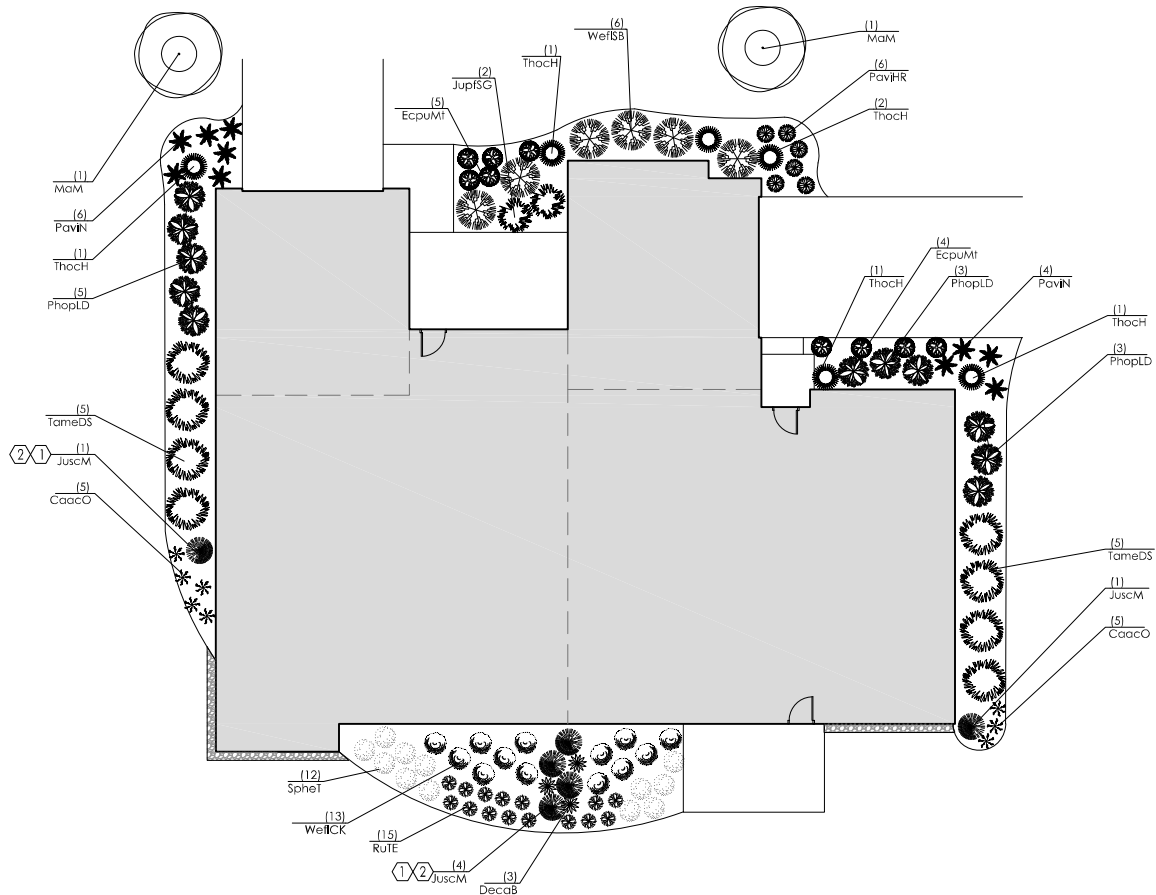
Proposed Plant Material Table - Plan #2

Broadleaf Deciduous Tree						
Quantity	Code Name	Symbol	Scientific Name	Common Name	Planting Size	Mature Size
3	MaM	○	Malus 'Marilee'	Marilee Flowering Crab	1 1/2" Cal - B&B	20' x 10'
Broadleaf Deciduous Shrub						
Quantity	Code Name	Symbol	Scientific Name	Common Name	Planting Size	Mature Size
8	DiKoO	●	Diervilla lonicera Kodiak Orange	Kodiak Orange Bush Honeysuckle Diervilla	18" - Cont	3.5' x 3.5'
6	SpFL	●	Spiraea x 'Fire Light'	Fire Light Spiraea	18" - Cont	2.0' x 4'
Conifer Evergreen Shrub						
Quantity	Code Name	Symbol	Scientific Name	Common Name	Planting Size	Mature Size
6	JuscM	●	Juniperus scopulorum 'Medora'	Medora Juniper	4" - B&B	20' x 10'
4	JupISG	●	Juniperus x pfitzeriana 'MonSant'	Sea of Gold Juniper	18" - 24" - B&B	3' x 4'
8	TameDS	●	Taxus x media 'Densformis Select'	Select Dense Spreading Yew	18" - 24" - B&B	4' x 6'
4	ThocH	●	Thuja occidentalis 'Holmstrup'	Holmstrup Dwarf Arborvitae	3' - Cont	5' x 3'
Perennial Grass						
Quantity	Code Name	Symbol	Scientific Name	Common Name	Planting Size	Mature Size
40	CaacO	●	Calamagrostis actifolia "overdam"	Overdam FeatherReed Grass	1-Gal - Cont	4' x 2.5'
12	SpheT	●	Sporobolus heterolepis 'Tara'	Tara Prairie Dropseed	1-Gal - Cont	2.5' x 2.5'
Perennial						
Quantity	Code Name	Symbol	Scientific Name	Common Name	Planting Size	Mature Size
14	HeNo	●	Hemerocallis x 'Nosteratu'	Trophytaker Nosteratu Daylily	4 1/2" pot	2' x 2'
13	HeAM	●	Heuchera x 'Amethyst Mist'	Amethyst Mist Coral Bells	4 1/2" pot	2' x 2'

COPYRIGHT InSite Landscape Design Inc. 2020  
ALL RIGHTS RESERVED  
THIS DRAWING IS NOT TO BE REPRODUCED,  
CHANGED, COPIED OR ASSIGNED TO ANY THIRD  
PARTY IN ANY FORM OR MANNER WITHOUT FIRST  
OBTAINING THE EXPRESSED WRITTEN PERMISSION  
OF InSite Landscape Design, Inc. THE CLIENT AGREES  
TO INDEMNIFY AND HOLD THE InSite Landscape  
Design Inc. HARMLESS FROM ANY DAMAGES,  
LIABILITY OR COST, INCLUDING ATTORNEY'S FEES  
AND COSTS OF DEFENSE ARISING FROM ANY  
CHANGES OR ALTERATIONS MADE BY ANYONE  
OTHER THAN THE InSite Landscape Design Inc. OR  
FROM ANY REUSE OF THE DRAWINGS OR DATA  
WITHOUT THE PRIOR WRITTEN CONSENT OF THE  
InSite Landscape Design Inc.

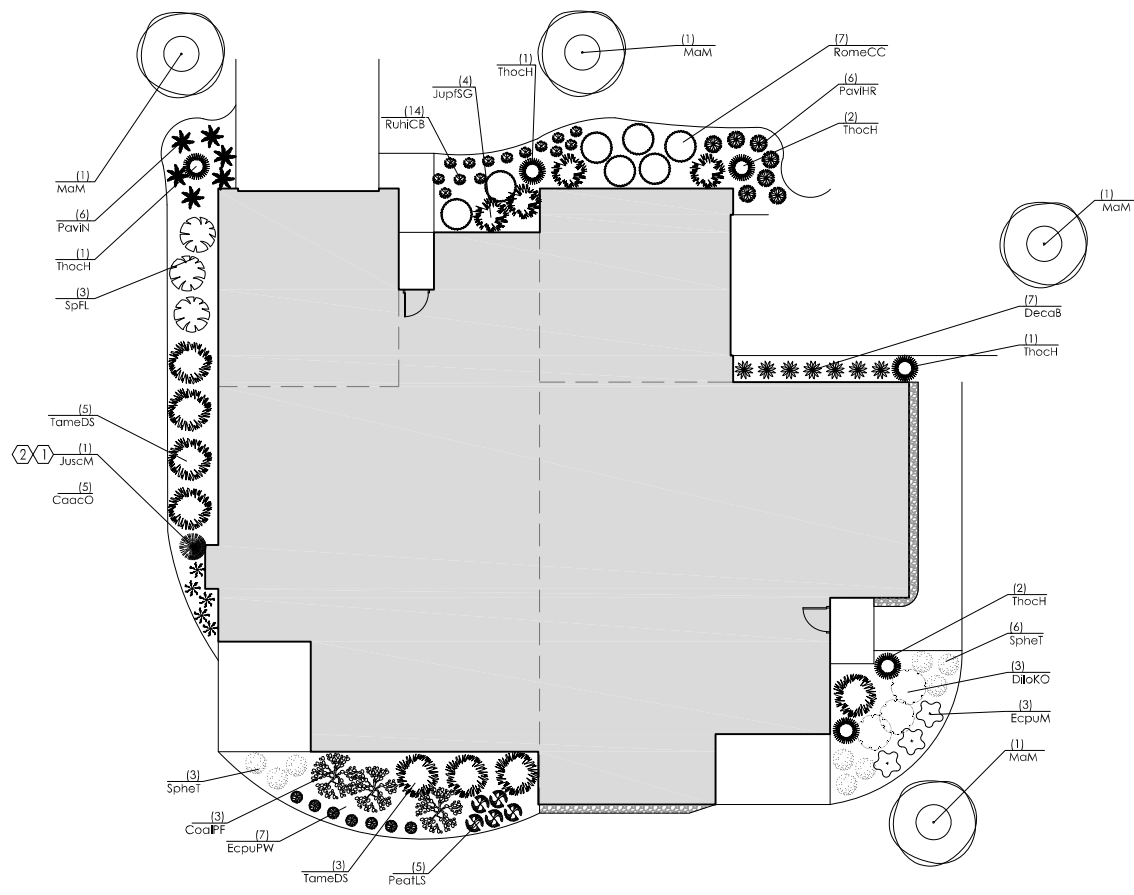
NOT FOR CONSTRUCTION - PRELIMINARY - FOR ESTIMATING AND REVIEW ONLY - DO NOT SCALE THESE DRAWINGS-  
These progress documents reflect progress & intent & may be subject to change, including additional notes and detail. These are not final construction documents and should not be used for final bidding or construction-related purposes.





1 PROPOSED CONDOMINIM FOUNDATION LANDSCAPE PLAN - #3

SCALE: 1" = 10'-0"



2 PROPOSED CONDOMINIM FOUNDATION LANDSCAPE PLAN - #4

SCALE: 1" = 10'-0"

Proposed Plant Material Table - Plan #3

Broadleaf Deciduous Tree						
Quantity	Code Name	Symbol	Scientific Name	Common Name	Planting Size	Mature Size
2	MaM		Malus 'Marilee'	Marilee Flowering Crab	1 1/2" Cal - B&B	20' x 10'
Broadleaf Deciduous Shrub						
Quantity	Code Name	Symbol	Scientific Name	Common Name	Planting Size	Mature Size
11	PhopLD		Physocarpus opulifolius 'Donna May'	Little Devil Ninebark	18" - 24" - Cont	3.5' x 3.5'
6	WeISB		Weigela florida 'Bokrasoph'	Sonic Bloom Pink Reblooming Weigela	18" - 24" - Cont	4' x 4'
13	WeISB		Weigela florida 'WFM0BLA'	Coco Krunch Weigela	18" - Cont	2.5' x 2.5'
Conifer Evergreen Shrub						
Quantity	Code Name	Symbol	Scientific Name	Common Name	Planting Size	Mature Size
6	JuscM		Juniperus scopulorum 'Medora'	Medora Juniper	4' - B&B	20' x 10'
2	JupISG		Juniperus x pfizeriana 'MonSan'	Sea of Gold Juniper	18" - 24" - B&B	3' x 4'
8	TameDS		Taxus x media 'Densformis Select'	Select Dense Spreading Yew	18" - 24" - B&B	4' x 6'
6	ThocH		Thuja occidentalis 'Holmstrup'	Holmstrup Dwarf Arborvitae	3' - Cont	5' x 3'
Perennial Grass						
Quantity	Code Name	Symbol	Scientific Name	Common Name	Planting Size	Mature Size
8	CoacO		Calamagrostis acutifolia 'overdam'	Overdam FeatherReed Grass	1-Gal - Cont	4' x 2.5'
3	DecaB		Deschampsia caespitosa Bronzeschleier	Bronze Veil Tuft Hair Grass	1-Gal - Cont	3' x 2'
6	PavINR		Panicum virgatum 'Hot Rod'	Hot Rod Switch Grass	1-Gal - Cont	3' x 2'
10	PavIN		Panicum virgatum 'Northwind'	Northwind Switch Grass	1-Gal - Cont	5' x 3'
12	SpheT		Sporobolus heterolepis 'Tara'	Tara Prairie Dropseed	1-Gal - Cont	2.5' x 2.5'

Proposed Plant Material Table - Plan #4

Broadleaf Deciduous						
Quantity	Code Name	Symbol	Scientific Name	Common Name	Planting Size	Mature Size
4	MaM		Malus 'Marilee'	Marilee Flowering Crab	1 1/2" Cal - B&B	20' x 10'
Broadleaf Deciduous Shrub						
Quantity	Code Name	Symbol	Scientific Name	Common Name	Planting Size	Mature Size
3	CoaPF		Cornus alba 'Prairie Fire'	Prairie Fire Dogwood	18" - 24" - Cont	3' x 4'
3	DilaKO		Diervilla lonicera Kodiak Orange	Kodiak Orange Bush Honeysuckle Diervilla	18" - Cont	3.5' x 3.5'
7	RomeCC		Rosa 'Meikansai'	Candy Cane Cocktail Rose	18" - Cont	3' x 4'
3	SpFL		Spiraea x 'Fire Light'	Fire Light Spirea	18" - Cont	2.0' x 4'
Conifer Evergreen Shrub						
Quantity	Code Name	Symbol	Scientific Name	Common Name	Planting Size	Mature Size
1	JuscM		Juniperus scopulorum 'Medora'	Medora Juniper	4' - B&B	20' x 10'
4	JupISG		Juniperus x pfizeriana 'MonSan'	Sea of Gold Juniper	18" - 24" - B&B	3' x 4'
8	TameDS		Taxus x media 'Densformis Select'	Select Dense Spreading Yew	18" - 24" - B&B	4' x 6'
6	ThocH		Thuja occidentalis 'Holmstrup'	Holmstrup Dwarf Arborvitae	3' - Cont	5' x 3'
Perennial Grass						
Quantity	Code Name	Symbol	Scientific Name	Common Name	Planting Size	Mature Size
5	CoacO		Calamagrostis acutifolia "overdam"	Overdam FeatherReed Grass	1-Gal - Cont	4' x 2.5'
7	DecaB		Deschampsia caespitosa Bronzeschleier	Bronze Veil Tuft Hair Grass	1-Gal - Cont	3' x 2'
7	PavINR		Panicum virgatum 'Hot Rod'	Hot Rod Switch Grass	1-Gal - Cont	3' x 2'
6	PavIN		Panicum virgatum 'Northwind'	Northwind Switch Grass	1-Gal - Cont	5' x 3'
9	SpheT		Sporobolus heterolepis 'Tara'	Tara Prairie Dropseed	1-Gal - Cont	2.5' x 2.5'
Perennial						
Quantity	Code Name	Symbol	Scientific Name	Common Name	Planting Size	Mature Size
3	EcpuM		Echinacea purpurea 'Magnus'	Magnus Purple Coneflower	4 1/2" pot	3' x 3'
7	EcpuPW		Echinacea purpurea 'PAS702917'	Pow Wow Wild Berry Coneflower	4 1/2" pot	2' x 2'
5	PeatLS		Perovskia atriplicifolia 'Little Spire'	Little Spire Russian Sage	4 1/2" pot	2' x 2'
14	RuhCB		Rudbeckia hirta 'Cherry Brandy'	Cherry Brandy Gloriosa Daisy	4 1/2" pot	2' x 2'

**InSITE**  
LANDSCAPE DESIGN  
Landscape Consulting  
& Master Planning Design Services  
11525 W. North Avenue, Suite 1B  
Wauwatosa, WI 53226  
Tel (414) 476-1204  
www.insitedesigninc.com  
mdavis@insitedesigninc.com

Project:

## STONEBROOK ON THE PARK

641 East Drexel Avenue  
Oak Creek, WI

Issuance and Revisions:

Date	Number	Description
10/05/22		Client Review Submittal

COPYRIGHT InSite Landscape Design Inc. 2020  
ALL RIGHTS RESERVED  
THIS DRAWING IS NOT TO BE REPRODUCED,  
CHANGED, COPIED OR ASSIGNED TO ANY THIRD  
PARTY IN ANY FORM OR MANNER WITHOUT FIRST  
OBTAINING THE EXPRESSED WRITTEN PERMISSION  
OF InSite Landscape Design, Inc. THE CLIENT AGREES  
TO INDEMNIFY AND HOLD THE InSite Landscape  
Design, Inc. HARMLESS FROM ANY DAMAGES,  
LIABILITY OR COST, INCLUDING ATTORNEY'S FEES  
AND COSTS OF DEFENSE ARISING FROM ANY  
CHANGES OR ALTERATIONS MADE BY ANYONE  
OTHER THAN THE InSite Landscape Design Inc. OR  
FROM ANY REUSE OF THE DRAWINGS OR DATA  
WITHOUT THE PRIOR WRITTEN CONSENT OF THE  
InSite Landscape Design Inc.

Sheet Title:

PROPOSED FOUNDATION  
LANDSCAPE PLANS FOR  
BUILDINGS #3 & #4  
AND PLANT MATERIAL TABLES

Date of Drawing: 10/05/22  
Scale: 1" = 10'-0"  
Drawn By: MCD  
Job Number: L22-050  
Sheet Number:

LSP1.7

NOT FOR CONSTRUCTION - PRELIMINARY - FOR ESTIMATING AND REVIEW ONLY - DO NOT SCALE THESE DRAWINGS - These progress documents reflect progress & intent & may be subject to change, including additional notes and detail. These are not final construction documents and should not be used for final bidding or construction-related purposes.

L22-050 - STONEBROOK ON THE PARK - 10/05/2022



Project:

STONEBROOK ON  
THE PARK

641 East Drexel Avenue  
Oak Creek, WI

Issuance and Revisions:

Date	Number	Description
10/05/22		Client Review Submittal

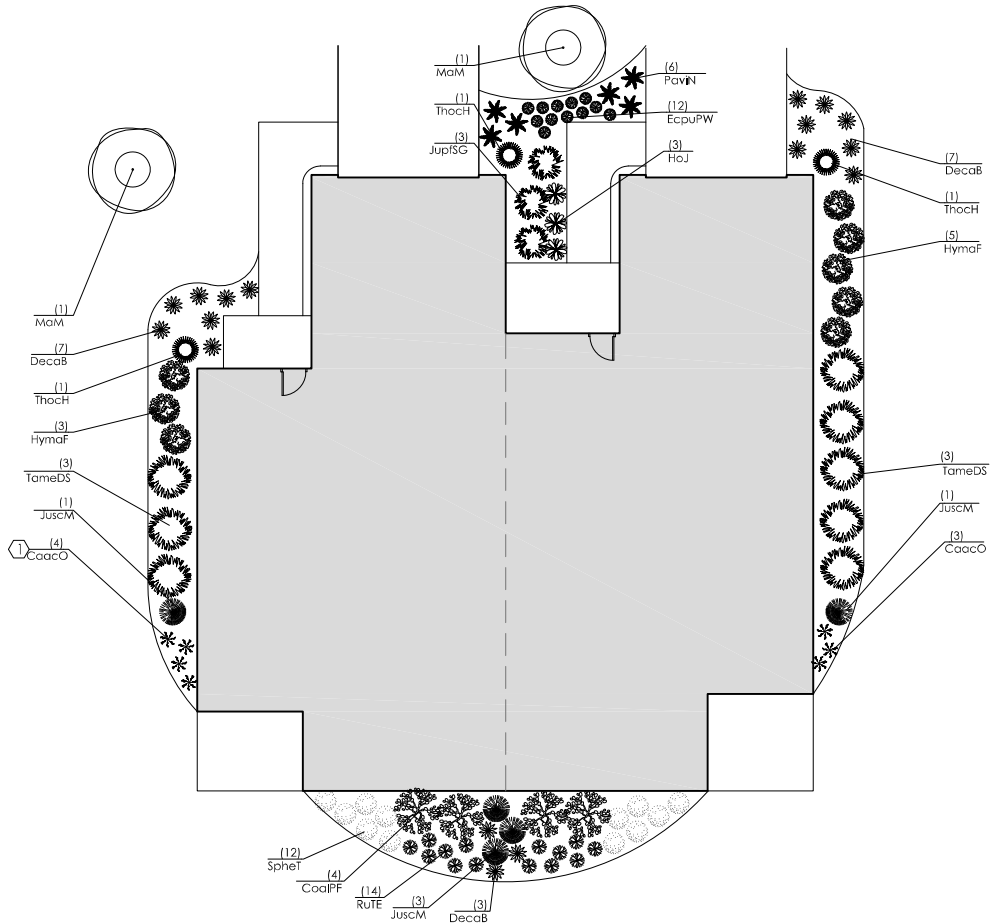
COPYRIGHT InSite Landscape Design Inc. 2020  
ALL RIGHTS RESERVED  
THIS DRAWING IS NOT TO BE REPRODUCED,  
CHANGED, COPIED OR ASSIGNED TO ANY THIRD  
PARTY IN ANY FORM OR MANNER WITHOUT FIRST  
OBTAINING THE EXPRESSED WRITTEN PERMISSION  
OF InSite Landscape Design, Inc. THE CLIENT AGREES  
TO INDEMNIFY AND HOLD THE InSite Landscape  
Design Inc. HARMLESS FROM ANY DAMAGES,  
LIABILITY, OR COST, INCLUDING ATTORNEYS FEES  
AND COSTS OF DEFENSE ARISING FROM ANY  
CHANGES OR ALTERATIONS MADE BY ANYONE  
OTHER THAN THE InSite Landscape Design Inc., OR  
FROM ANY REUSE OF THE DRAWINGS OR DATA  
WITHOUT THE PRIOR WRITTEN CONSENT OF THE  
InSite Landscape Design Inc.

Sheet Title:

PROPOSED FOUNDATION  
LANDSCAPE PLANS FOR  
BUILDING #5  
AND PLANT MATERIAL TABLES

Date of Drawing:	10/05/22
Scale:	1" = 10'-0"
Drawn By:	MCD
Job Number:	L22-050
Sheet Number:	

LSP1.8



1 PROPOSED CONDOMINIM FOUNDATION LANDSCAPE PLAN - #5

SCALE: 1" = 10'-0"

Proposed Plant Material Table - Plan #5

Broadleaf Deciduous

Quantity	Code Name	Symbol	Scientific Name	Common Name	Planting Size	Mature Size	Comments
2	MaM	○	<i>Malus 'Maries'</i>	Mariee Flowering Crab	1 1/2" Cal - B&B	20' x 10'	

Broadleaf Deciduous Shrub

Quantity	Code Name	Symbol	Scientific Name	Common Name	Planting Size	Mature Size	Comments
4	CoalPF	●	<i>Cornus alba 'Prairie Fire'</i>	Prairie Fire Dogwood	18" - 24" - B&B	3' x 4'	
8	HymaF	●	<i>Hydrangea macrophylla 'Fanfare'</i>	Next Generation Wedding Ring Hydrangea	18" - Cont	3' x 4'	

Conifer Evergreen Shrub

Quantity	Code Name	Symbol	Scientific Name	Common Name	Planting Size	Mature Size	Comments
5	JuscM	●	<i>Juniperus scopulorum 'Medora'</i>	Medora Juniper	4" - B&B	20' x 10'	
3	JupISG	●	<i>Juniperus x pfitzeriana 'MonSan'</i>	Sea of Gold Juniper	18" - 24" - B&B	3' x 4'	
8	TameDS	●	<i>Taxus x media 'Densiformis Select'</i>	Select Dense Spreading Yew	18" - 24" - B&B	4' x 6'	
3	ThocH	●	<i>Thuja occidentalis 'Holmstrup'</i>	Holmstrup Dwarf Arborvitae	3' - Cont	5' x 3'	

Perennial Grass

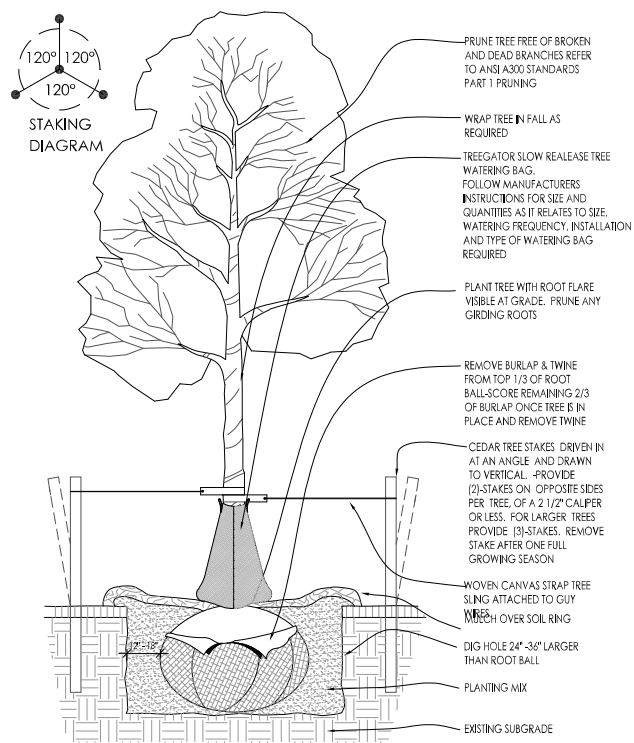
Quantity	Code Name	Symbol	Scientific Name	Common Name	Planting Size	Mature Size	Comments
7	CaacO	✱	<i>Calamagrostis acutifolia 'Overdam'</i>	Overdam Feather Reed Grass	1-Gal - Cont	4' x 2.5'	
17	DecaB	✱	<i>Deschampsia caespitosa Bronzeschleier</i>	Bronze Veil Tuft Hair Grass	1-Gal - Cont	3' x 2'	
6	PavIN	✱	<i>Panicum virgatum 'Northwind'</i>	Northwind Switch Grass	1-Gal - Cont	5' x 3'	
12	SpheT	☼	<i>Sporobolus heterolepis 'Tara'</i>	Tara Prairie Dropseed	1-Gal - Cont	2.5' x 2.5'	

Perennial

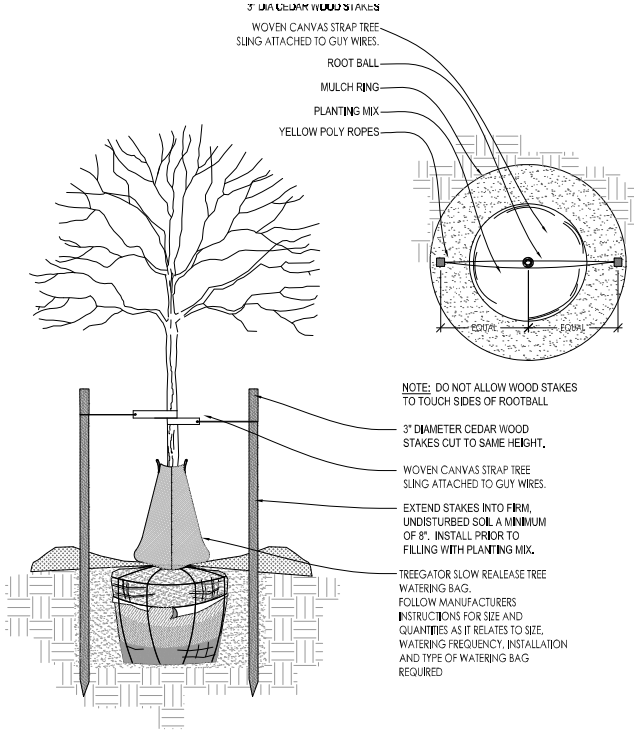
Quantity	Code Name	Symbol	Scientific Name	Common Name	Planting Size	Mature Size	Comments
12	EcpuMt	●	<i>Echinacea purpurea 'Merlot'</i>	Merlot Coneflower	4 1/2" pot	2' x 2'	
3	HoJ	●	<i>Hosta x 'June'</i>	June Plantain Lily	1-Gal - Cont	1.5' x 2.5'	
14	RuTE	●	<i>Rudbeckia 'TigerEye'</i>	TigerEye Gloriosa Daisy	4 1/2" pot	2' x 2'	

NOT FOR CONSTRUCTION - PRELIMINARY - FOR ESTIMATING AND REVIEW ONLY- DO NOT SCALE THESE DRAWINGS- These progress documents reflect progress & intent & may be subject to change, including additional notes and detail. These are not final construction documents and should not be used for final bidding or construction-related purposes.

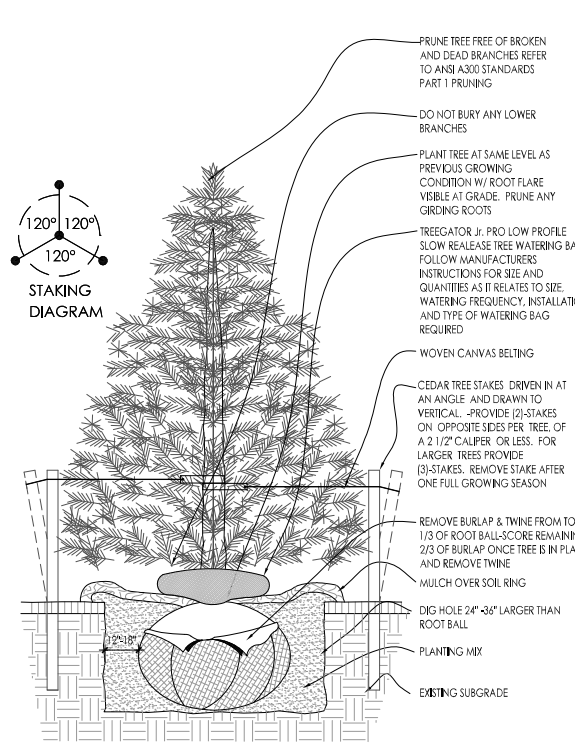




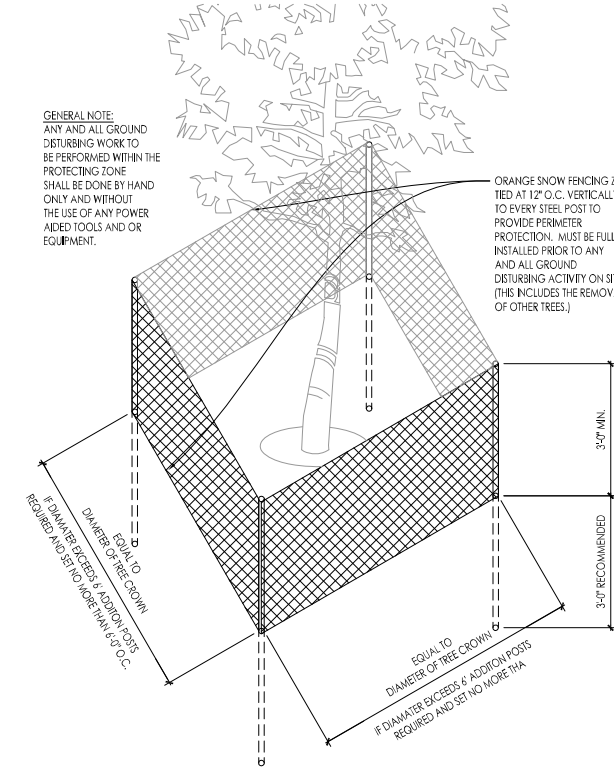
1 DECIDUOUS TREE PLANTING DETAIL SCALE: NONE



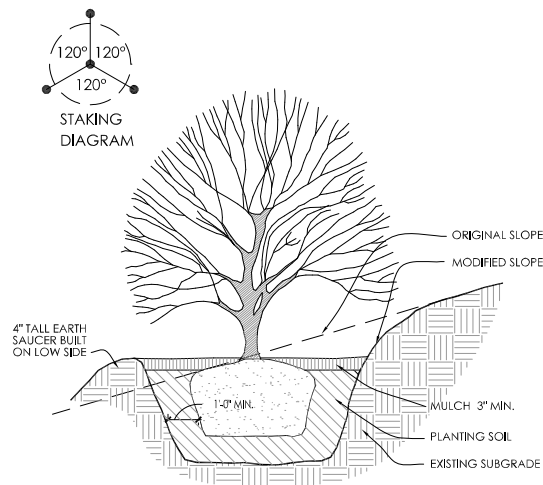
2 DECIDUOUS TREE STAKING PARKING ISLAND/RESTRICTED AREAS SCALE: NONE



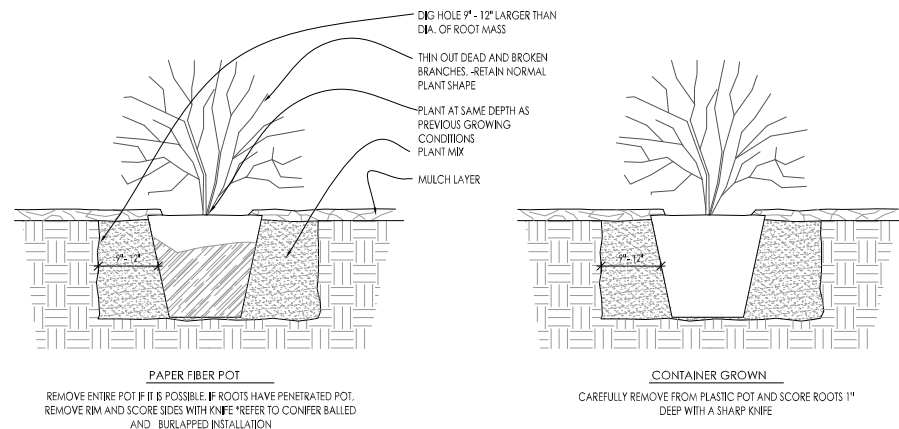
3 CONIFEROUS TREE PLANTING DETAIL SCALE: NONE



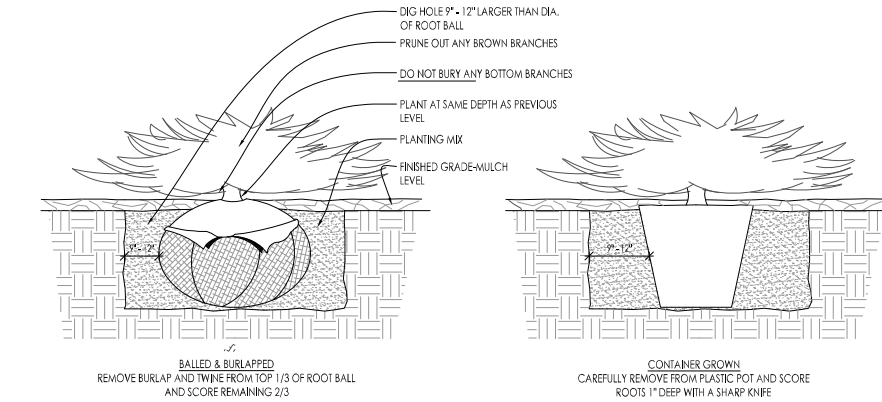
4 EXISTING TREE PROTECTION DETAIL SCALE: NONE



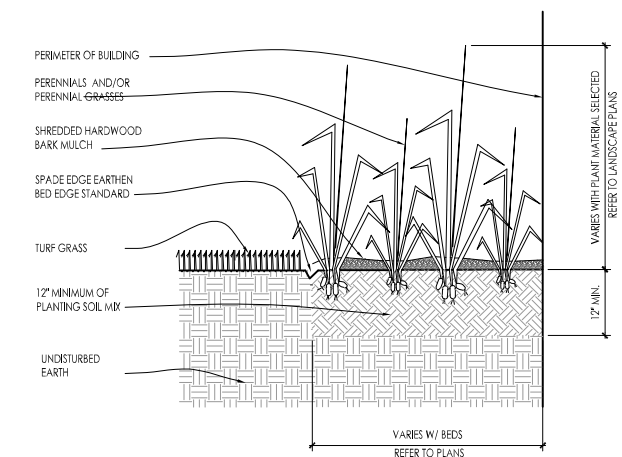
5 SLOPE PLANTING DETAIL SCALE: NONE



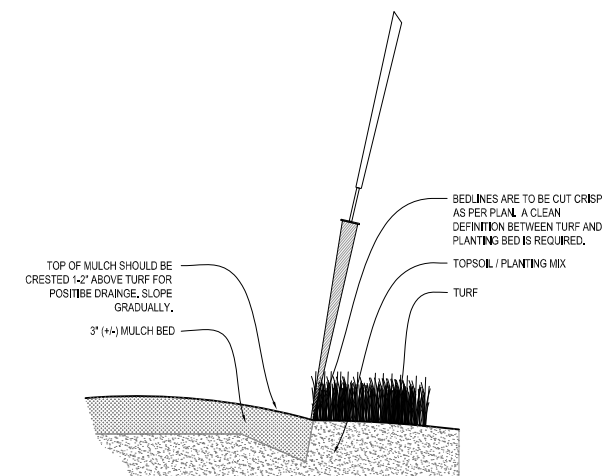
6 DECIDUOUS SHRUB PLANTING DETAIL SCALE: NONE



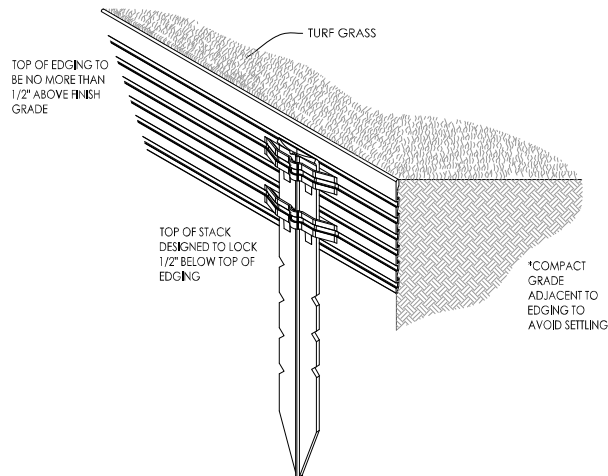
7 CONIFEROUS SHRUB PLANTING DETAIL SCALE: NONE



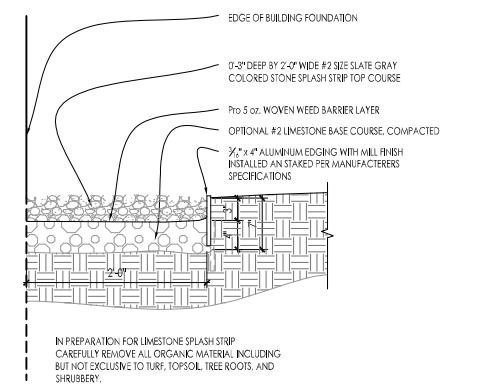
8 PERENNIAL BED PLANTING DETAIL SCALE: NONE



9 SPADE EDGE PLANT BED EDGE DETAIL SCALE: NONE



10 METAL LANDSCAPE EDGING DETAIL SCALE: 1/2\"/>



11 COMPACTED GRAVEL SPLASH STRIP SCALE: 1\"/>

Project:  
**STONEBROOK ON THE PARK**  
641 East Drexel Avenue  
Oak Creek, WI

Issuance and Revisions:

Date	Number	Description
10/05/22		Client Review Submittal

COPYRIGHT InSite Landscape Design Inc. 2020  
ALL RIGHTS RESERVED  
THIS DRAWING IS NOT TO BE REPRODUCED, CHANGED, COPIED OR ASSIGNED TO ANY THIRD PARTY IN ANY FORM OR MANNER WITHOUT FIRST OBTAINING THE EXPRESSED WRITTEN PERMISSION OF InSite Landscape Design, Inc. THE CLIENT AGREES TO INDEMNIFY AND HOLD THE InSite Landscape Design Inc. HARMLESS FROM ANY DAMAGES, LIABILITY, OR COST, INCLUDING ATTORNEY'S FEES AND COSTS OF DEFENSE ARISING FROM ANY CHANGES OR ALTERATIONS MADE BY ANYONE OTHER THAN THE InSite Landscape Design Inc. OR FROM ANY REUSE OF THE DRAWINGS OR DATA WITHOUT THE PRIOR WRITTEN CONSENT OF THE InSite Landscape Design Inc.

Sheet Title:

PROPOSED LANDSCAPE PLAN,  
PLANTING DETAILS

Date of Drawing: 10/05/22  
Scale: As Noted  
Drawn By: MCD  
Job Number: L22-050  
Sheet Number:

**LSP1.9**

NOT FOR CONSTRUCTION - PRELIMINARY - FOR ESTIMATING AND REVIEW ONLY- DO NOT SCALE THESE DRAWINGS-  
These progress documents reflect progress & intent & may be subject to change, including additional notes and detail. These are not final construction documents and should not be used for final bidding or construction-related purposes.