

# LAKE SHORE COMMONS

SHEET 1 OF 8 SHEETS

BEING ALL OF LOT 3, OF CERTIFIED SURVEY MAP No. 9355, AS RECORDED WITHIN CERTIFIED SURVEY MAPS OF THE MILWAUKEE COUNTY REGISTRY AS DOCUMENT No. 11174987, BEING PART OF THE FRACTIONAL SOUTHWEST 1/4 OF SECTION 24, TOWNSHIP 05 NORTH, RANGE 22 EAST, SITUATED IN THE CITY OF OAK CREEK, MILWAUKEE COUNTY, WISCONSIN.

### LINE TABLE

L1 = S00°02'00"E 2.50'	L11 = S47°17'16"E 18.13'	L21 = S05°36'08"W 98.14'	L31 = N01°17'09"W 14.52'
L2 = N89°58'00"E 33.77'	L12 = S07°07'40"W 25.09'	L22 = S71°33'44"E 41.54'	L32 = N38°26'21"E 24.25'
L3 = N51°32'08"E 39.83'	L13 = S13°19'18"E 85.24'	L23 = N58°05'03"E 23.59'	L33 = N72°22'58"E 72.65'
L4 = N89°42'28"E 54.27'	L14 = S04°53'47"E 83.89'	L24 = N12°41'03"E 65.33'	L34 = S69°59'02"E 50.59'
L5 = S34°27'31"E 80.86'	L15 = S63°26'16"W 54.37'	L25 = N28°53'33"E 3.14'	L35 = S69°15'16"E 57.77'
L6 = S04°00'06"W 54.84'	L16 = N79°17'03"W 34.56'	L26 = N73°11'10"E 82.38'	L36 = S00°00'58"W 43.42'
L7 = S00°00'10"W 102.81'	L17 = N47°51'32"W 84.05'	L27 = N57°19'53"E 38.90'	L37 = N69°15'16"W 57.13'
L8 = S15°25'25"E 75.24'	L18 = N59°02'00"W 87.71'	L28 = N56°14'47"E 69.80'	L38 = N89°59'02"W 48.82'
L9 = S33°06'31"E 40.42'	L19 = N86°10'59"W 66.41'	L29 = N00°17'48"E 66.20'	L39 = S00°00'58"W 39.42'
L10 = S37°18'04"E 27.02'	L20 = S30°34'55"W 98.75'	L30 = N12°02'01"W 19.65'	L40 = S30°00'58"W 105.62'
L41 = S00°00'10"W 41.75'	L50 = N72°22'58"E 72.65'		
L42 = S00°00'10"W 123.42'	L51 = S17°37'25"E 13.50'		
L43 = S00°00'10"W 62.36'	L52 = N89°59'02"W 50.20'		
L44 = S00°00'10"W 165.17'	L53 = N89°59'02"W 67.58'		
L45 = N31°54'57"W 40.13'	L54 = N89°59'02"W 143.00'		
L46 = N12°41'03"E 65.33'	L55 = N89°59'02"W 143.00'		
L47 = N17°37'25"E 52.46'			
L48 = N72°22'35"E 105.00'			
L49 = N38°26'21"E 23.44'			

### LEGEND:

- = 1.315" O.D. IRON PIPE FOUND
- = 2.375" O.D. X 18" LONG IRON PIPE SET WEIGHING 3.65 LBS./LINEAR FT.
- = 1.315" O.D. X 18" LONG IRON PIPE SET WEIGHING 1.68 LBS./LINEAR FT. AT ALL OTHER LOT CORNERS.
- = SECTION CORNER MONUMENT
- = RIGHT-OF-WAY LINE
- - - = PROPERTY LINE

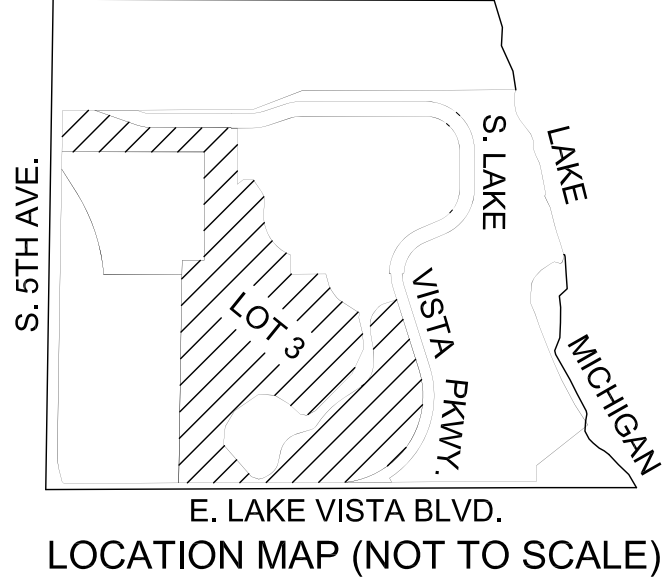
ALL LINEAR MEASUREMENTS HAVE BEEN MADE TO THE NEAREST 0.01 OF A FOOT.  
ALL DISTANCES SHOWN ALONG CURVED LINES ARE ARC DISTANCES.

NORTH REFERENCE:  
NORTH REFERENCED TO THE WISCONSIN STATE PLANE COORDINATE SYSTEM SOUTH ZONE, NAD 27, THE WEST LINE OF THE FRACTIONAL SW 1/4 OF SEC. 24-05-22, BEARING N 00°52'00" E.

### CURVE TABLE

CURVE NO.	RADIUS LENGTH	CHORD BEARING	CHORD LENGTH	ARC LENGTH	CENTRAL ANGLE	TANGENT BEARING IN	TANGENT BEARING OUT
C1	85.00'	S15°13'42.6"E	55.99'	57.06'	38°27'37"	S34°27'31"E	S04°00'06"W
C2	232.51'	S32°04'35.5"E	273.85'	292.82'	72°09'23"	S04°00'06"W	S68°09'17"E
C3	99.00'	N70°33'47.5"E	42.78'	43.12'	24°57'29"	N83°02'32"E	N58°05'03"E
C4	99.00'	N35°23'03"E	76.41'	78.45'	45°24'00"	N58°05'03"E	N12°41'03"E
C5	113.00'	N20°47'18"E	31.86'	31.97'	16°12'30"	N12°41'03"E	N28°53'33"E
C6	125.00'	N51°02'21.5"E	94.25'	96.63'	44°17'37"	N28°53'33"E	N73°11'10"E
C7	49.00'	N52°53'21.5"E	34.00'	34.72'	40°35'37"	N73°11'10"E	N32°35'33"E
C8	501.00'	N44°57'43"E	214.64'	216.32'	24°44'20"	N32°35'33"E	N57°19'53"E
C9	149.00'	N28°16'16.5"E	139.79'	145.50'	55°57'01"	N56°14'47"E	N00°17'46"E
C10	99.00'	N05°52'07.5"W	21.26'	21.30'	12°19'47"	N00°17'46"E	N12°02'01"W
C11	501.00'	N06°39'35"W	93.84'	93.98'	10°44'52"	N12°02'01"W	N01°17'09"W
C12	101.00'	N18°34'36"E	68.63'	70.03'	39°43'30"	N01°17'09"W	N38°26'21"E
C13	76.00'	N55°24'39.5"E	44.37'	45.02'	33°56'37"	N38°26'21"E	N22°22'58"E
C14	470.00'	S32°50'12"W	724.91'	827.86'	100°55'14"	S17°37'25"E	S89°46'26"W
C15	124.00'	S79°37'09"E	44.62'	44.86'	20°43'46"	S89°59'02"E	S69°15'16"E
C16	187.00'	S06°02'00"W	39.21'	39.28'	12°02'04"	S12°03'02"W	S00°00'58"W
C17	30.58'	S44°59'02"E	43.25'	48.04'	90°00'00"	S89°59'02"E	S00°00'58"W
C18	113.00'	S15°00'58"W	58.49'	59.17'	30°00'00"	S00°00'58"W	S30°00'58"W
C19	187.00'	S29°01'34"W	6.46'	6.46'	01°58'48"	S30°00'58"W	S28°02'10"W
C20	176.00'	N79°37'09"W	63.33'	63.68'	20°43'46"	N69°15'16"E	N89°59'02"W
C21	38.58'	S41°38'05"E	51.28'	56.09'	83°18'06"	S00°00'58"W	S83°17'08"E
C22	31.58'	S40°55'12"W	41.36'	45.09'	81°48'28"	S81°49'26"W	S00°00'58"W
C23	194.00'	S15°00'58"W	100.42'	101.58'	30°00'00"	S00°00'58"W	S30°00'58"W
C24	106.00'	S15°00'58"W	54.87'	55.50'	30°00'00"	S30°00'58"W	S00°00'58"W
C25	262.50'	S80°23'31"E	87.93'	88.34'	19°16'58"	S70°45'02"E	N89°58'00"E
C26	194.00'	S15°54'47"W	94.54'	95.51'	28°12'22"	S01°48'36"W	S30°00'58"W
C27	194.00'	S00°54'47"W	6.07'	6.07'	01°47'38"	S00°00'58"W	S01°48'36"W
C28	112.50'	N35°09'05.5"E	85.99'	88.23'	44°56'05"	N57°37'08"E	N12°41'03"E
C29	99.50'	N20°47'25"E	28.06'	28.15'	16°12'44"	N12°41'03"E	N28°53'47"E
C30	111.78'	N40°13'46.5"E	49.77'	50.19'	25°43'35"	N27°15'59"E	N53°05'34"E
C31	52.50'	N39°18'37.5"E	59.62'	63.41'	69°12'03"	N04°42'38"E	N73°54'39"E
C32	196.50'	N50°54'25.5"E	153.58'	157.79'	46°00'27"	N73°54'39"E	N27°54'12"E
C33	52.50'	N63°51'51"E	61.66'	65.90'	71°55'18"	N27°54'12"E	S80°10'30"E
C34	238.00'	N00°54'45"W	136.87'	138.83'	33°25'20"	N15°47'55"E	N17°37'25"W
C35	62.50'	N55°24'39.5"E	36.49'	37.03'	33°56'37"	N38°26'21"E	N72°22'58"E
C36	146.50'	N15°00'58"E	75.83'	76.71'	30°00'00"	N00°00'58"E	N30°00'58"E
C37	150.00'	S79°37'09"E	53.97'	54.27'	20°43'46"	S89°59'02"E	S69°15'16"E
C38	153.50'	N15°00'58"E	79.46'	80.37'	30°00'00"	N30°00'58"E	N00°00'58"E

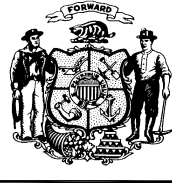
### FRACTIONAL SW 1/4 OF SEC. 24-05-22



LOCATION MAP (NOT TO SCALE)

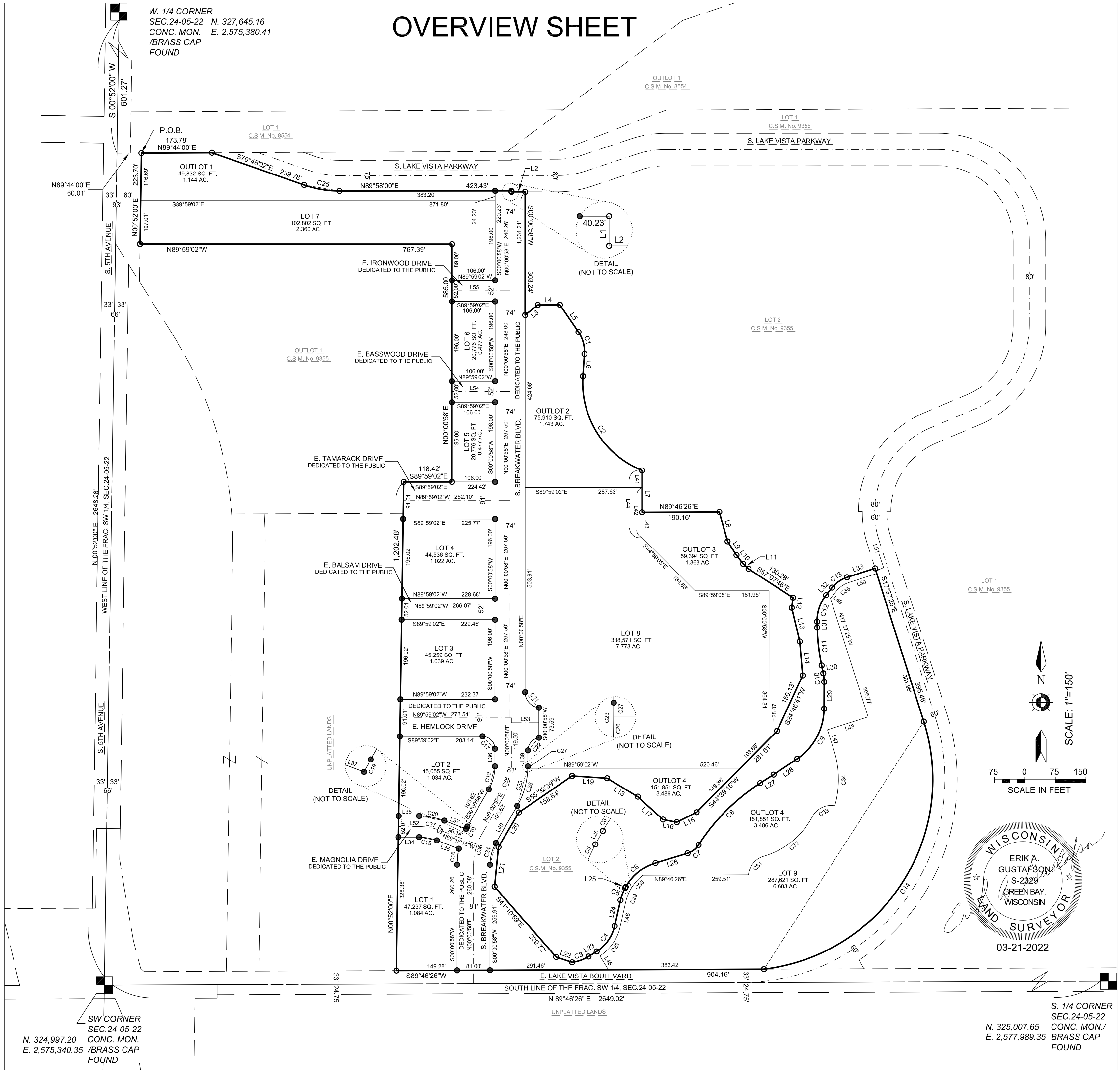
There are no objections to this plan with respect to Secs. 236.15, 236.16, 236.20 and 236.21(1) and (2), Wis Stats. as provided by s. 236.12, Wis. Stats.

Certified \_\_\_\_\_, 20\_\_



Department of Administration

## OVERVIEW SHEET



WISCONSIN  
ERIK A. GUSTAFSON  
S-2229  
GREEN BAY, WISCONSIN  
LAND SURVEYOR  
03-21-2022

S. 1/4 CORNER  
SEC. 24-05-22  
CONC. MON./  
E. 2,577,999.35  
BRASS CAP  
FOUND

**Kapur** 226 W. WISCONSIN AVE.  
APPLETON, WI 54911  
kapurinc.com