

Table 4.1. LDR Form Standards

Table 4.1.1. LDR1 Dimensional Standards		
Lot Occupation (See § 155-3.4, Lot occupation.)		
A	Lot width	200 feet minimum
	Lot area	90,000 square feet minimum
	Impervious surface	20% maximum
Setbacks (See § 155-3.5, Frontages.)¹		
Principal Building (feet)		
B	Front	100 minimum
C	Side	20 minimum
D	Rear	25 minimum
Accessory Buildings and Structures (feet)²		
E	Front (measured from rear of PB)	20 minimum
F	Front corner	100 minimum
G	Side	10 minimum
H	Rear	10 minimum
Building Height (maximum) (See § 155-3.3, Building height.)		
I	Principal building ^{3,4}	2 to 3 stories up to 35 feet
	Accessory building	2 stories up to 20 feet ²
	Accessory structure	1 story up to 15 feet
Frontage Yard Types (See § 155-3.5, Frontages.)		
	Common yard	Permitted
	Fence yard	Permitted
	Shallow yard	Not permitted
	Urban yard	Not permitted
	Pedestrian forecourt	Not permitted
	Vehicular forecourt	Not permitted
Facade Types (See § 155-3.5I.)		
Parking (See Article VIII, Parking Standards.)		
NOTES:		
1	Garage location shall be according to § 155-8.4, Parking location.	
2	Refer to § 155- 3.4F.	
3	A maximum of 40 feet if the required setbacks (rear and side) are increased 5 feet for every 1 foot of height increase above 35 feet	

Table 4.1.1. LDR1 Dimensional Standards

4 Refer to § **155-4.1C(4)**.

PB Principal building

Figure 4.1.1. LDR1 Form Illustration

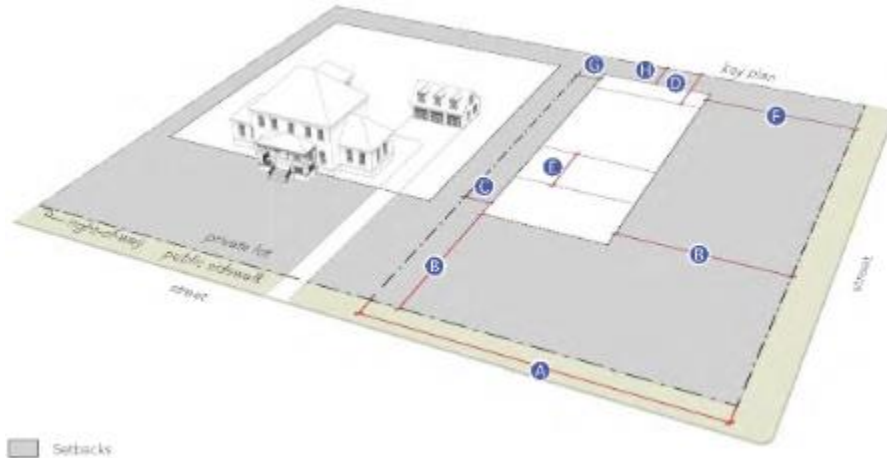


Table 4.1.2. LDR2 Dimensional Standards

Lot Occupation (See § 155-3.4, Lot occupation.)

A	Lot width	150 feet minimum
	Lot area	45,000 square feet minimum
	Impervious surface	21% maximum

Table 4.1.2. LDR2 Dimensional Standards		
Setbacks (See § 155-3.5, Frontages.)¹		
Principal Building (feet)		
B	Front	50 minimum
C	Side	20 minimum
D	Rear	25 minimum
Accessory Buildings and Structures (feet)²		
E	Front (measured from rear of PB)	20 minimum
F	Front corner	50 minimum
G	Side	10 minimum
H	Rear	10 minimum
Building Height (maximum) (See § 155-3.3, Building height.)		
I	Principal building ^{3,4}	2 to 3 stories up to 35 feet
	Accessory building	2 stories up to 20 feet ²
	Accessory structure	1 story up to 15 feet
Frontage Yard Types (See § 155-3.5, Frontages.)		
	Common yard	Permitted
	Fence yard	Permitted
	Shallow yard	Not permitted
	Urban yard	Not permitted
	Pedestrian forecourt	Not permitted
	Vehicular forecourt	Not permitted
Facade Types (See § 155-3.5I.)		
Parking (See Article VIII, Parking Standards.)		
NOTES:		
1	Garage location shall be according to § 155-8.4, Parking location.	
2	Refer to § 155-3.4F.	
3	A maximum of 40 feet if the required setbacks (rear and side) are increased 5 feet for every 1 foot of height increase above 35 feet	
4	Refer to § 155-4.1C(4).	
PB	Principal building	

Figure 4.1.2. LDR2 Form Illustration

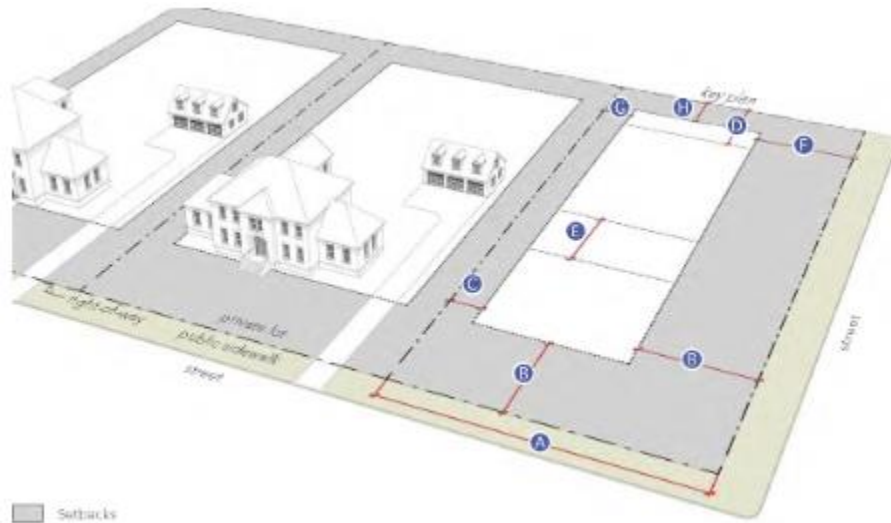


Table 4.1.3. LDR3 Dimensional Standards

Lot Occupation (See § 155-3.4, Lot occupation.)

A	Lot width	100 feet minimum
	Lot area	15,000 square feet minimum
	Impervious surface	28% maximum

Setbacks (See § 155-3.5, Frontages.)¹

Principal Building (feet)

B	Front	40 minimum
C	Side	15 minimum
D	Rear	25 minimum

Table 4.1.3. LDR3 Dimensional Standards

Accessory Buildings and Structures (feet)²		
E	Front (measured from rear of PB)	20 minimum
F	Front corner	40 minimum
G	Side	5 minimum
H	Rear	5 minimum
Building Height (maximum) (See § <u>155-3.3</u>, Building height.)		
I	Principal building	2 to 3 stories up to 35 feet ⁽³⁾
	Accessory building	2 stories up to 20 feet ²
	Accessory structure	1 story up to 15 feet
Frontage Yard Types (See § <u>155-3.5</u>, Frontages.)		
	Common yard	Permitted
	Fenced yard	Permitted
	Shallow yard	Not permitted
	Urban yard	Not permitted
	Pedestrian forecourt	Not permitted
	Vehicular forecourt	Not permitted
Facade Types (See § <u>155-3.5I</u>.)		
Parking (See Article <u>VIII</u>, Parking Standards.)		
NOTES:		
1		Garage location shall be according to § <u>155-8.4</u> , Parking location.
2		Refer to § <u>155-3.4F</u> .
3		Refer to § <u>155-4.1C(4)</u> .
PB		Principal building

Figure 4.1.3. LDR3 Form Illustration

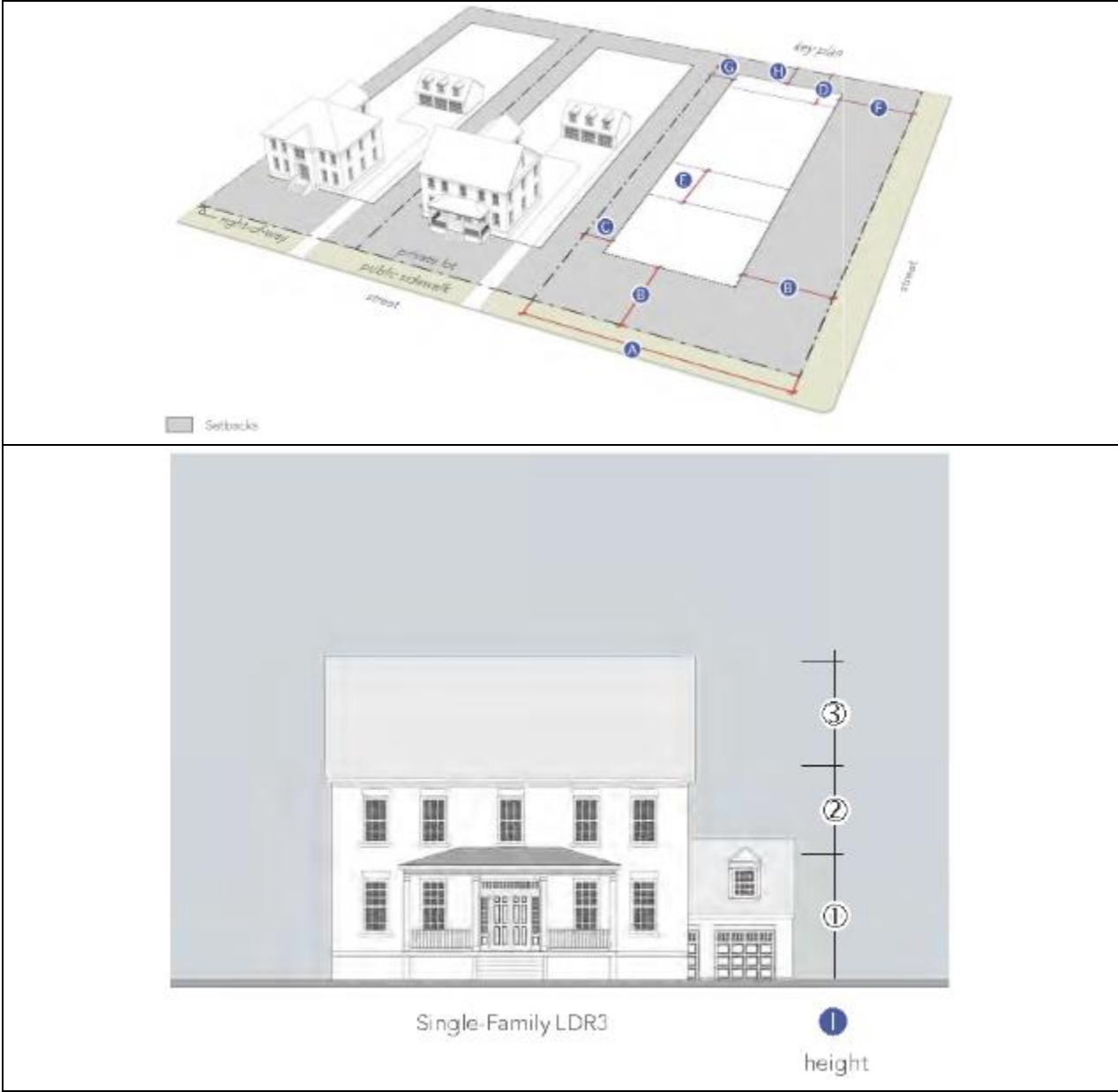
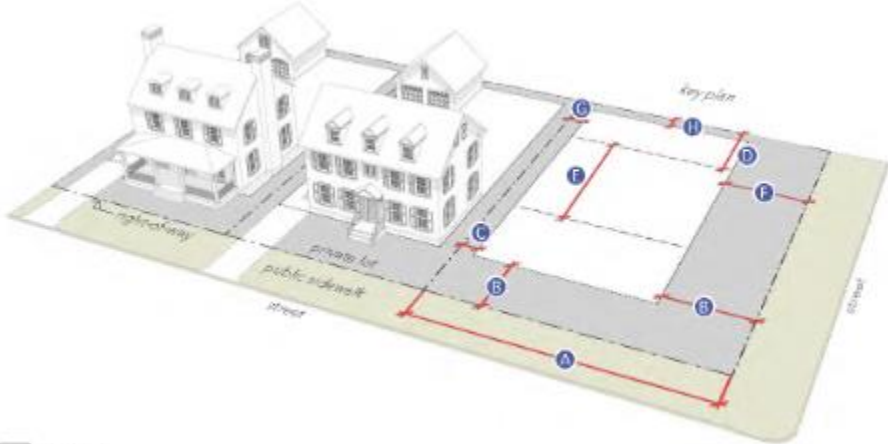


Table 4.1.4. LDR4 Dimensional Standards

Lot Occupation (See § 155-3.4, Lot occupation.)	
A Lot width	60 feet minimum
Lot area	7,500 square feet minimum
Impervious surface	45% maximum

Table 4.1.4. LDR4 Dimensional Standards		
Setbacks (See § 155-3.5, Frontages.)¹		
Principal Building (feet)		
B	Front	Predominant setback ⁴
C	Side	10 minimum
D	Rear	25 minimum
Accessory Buildings and Structures (feet)²		
E	Front (measured from rear of PB)	20 minimum
F	Front corner	25 minimum
G	Side	5 minimum
H	Rear	5 minimum
Building Height (maximum) (See § 155-3.3, Building height.)		
I	Principal building	2 to 3 stories up to 35 feet ³
	Accessory building	2 stories up to 20 feet ²
	Accessory structure	1 story up to 15 feet
Frontage Yard Types (See § 155-3.5, Frontages.)		
	Common yard	Permitted
	Fenced yard	Permitted
	Shallow yard	Not permitted
	Urban yard	Not permitted
	Pedestrian forecourt	Not permitted
	Vehicular forecourt	Not permitted
Facade Types (See § 155-3.5I, Frontages.)		
Parking (See Article VIII, Parking Standards.)		
NOTES:		
1	Garage location shall be according to § 155-8.4, Parking location.	
2	Refer to § 155-3.4F.	
3	Refer to § 155-4.1C(4).	
4	See § 155-3.4I, Predominant setback. Where the predominant setback does not apply, the front setback shall be a minimum of 25 feet.	
PB	Principal building	

Figure 4.1.4. LDR4 Form Illustration



Single-Family LDR4

height